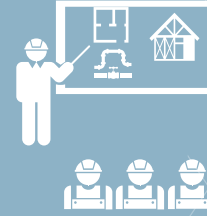
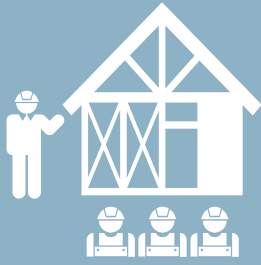


# APPRENTICESHIP TRAINING

**2,000+**  
**HOURS**

On-the-job  
training



**144+**  
**HOURS**

Related classroom  
instruction

## Advantages for the EMPLOYER

Apprentice workers are more cost effective for employers  
(Davis-Bacon Act)



- You may qualify to receive “on-the-job training” funds through ApprenticeshipNC

Apprenticeships are customized

- Companies of all sizes can participate
- You provide guidance and mentors—workers learn exactly how you want the job done



Apprenticeships improve job safety and employee retention



- 91% of apprentices are still with their employers after nine months
- Qualified workers are hard to find, and apprentices can fill vacant positions

## Advantages for the APPRENTICE

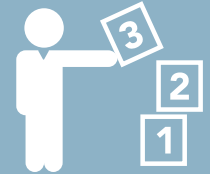
Journeyman credential—recognized nationwide!



- Earn a nationally-recognized credential through a registered apprenticeship program

Start with the basics—learn your job from the ground up

- Reinforce concepts and theories immediately on the job (learn today, apply the skill tomorrow)
- Find out what employers want



“Earn as you learn” pay scale



- Progress to advanced skills and become a competent, confident worker

## WAKE TECH handles the hardest tasks in the apprenticeship punch list.

### EMPLOYER

- Reviews weekly work
- Submits performance reviews and pay statements

### WAKE TECH

- Registers the program
- Registers the apprentice
- Submits monthly reports
- Submits annual reports
- Represents your company with ApprenticeshipNC

### APPRENTICE

- Tracks daily work (Shows up and learns)



## APPRENTICESHIP TRAINING



[apprenticeship.waketech.edu](http://apprenticeship.waketech.edu)

[apprenticeship.waketech.edu](http://apprenticeship.waketech.edu)

For more information:  
**Michael Moore**  
Director of Manufacturing  
and Apprenticeship Training  
  
919-335-1043  
[memoore1@waketech.edu](mailto:memoore1@waketech.edu)

For more information:  
**Michael Moore**  
Director of Manufacturing  
and Apprenticeship Training  
  
919-335-1043  
[memoore1@waketech.edu](mailto:memoore1@waketech.edu)