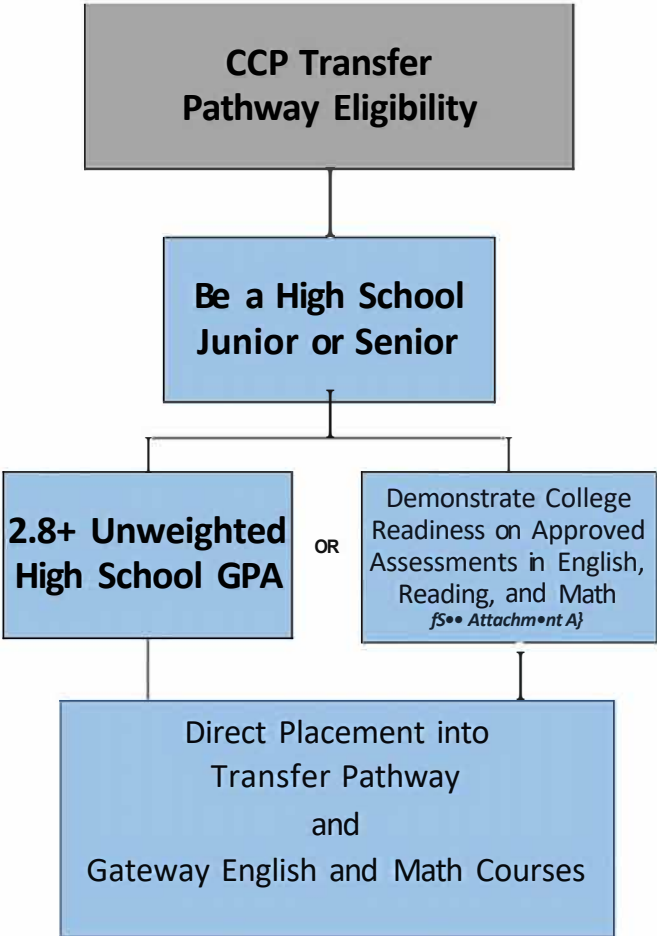
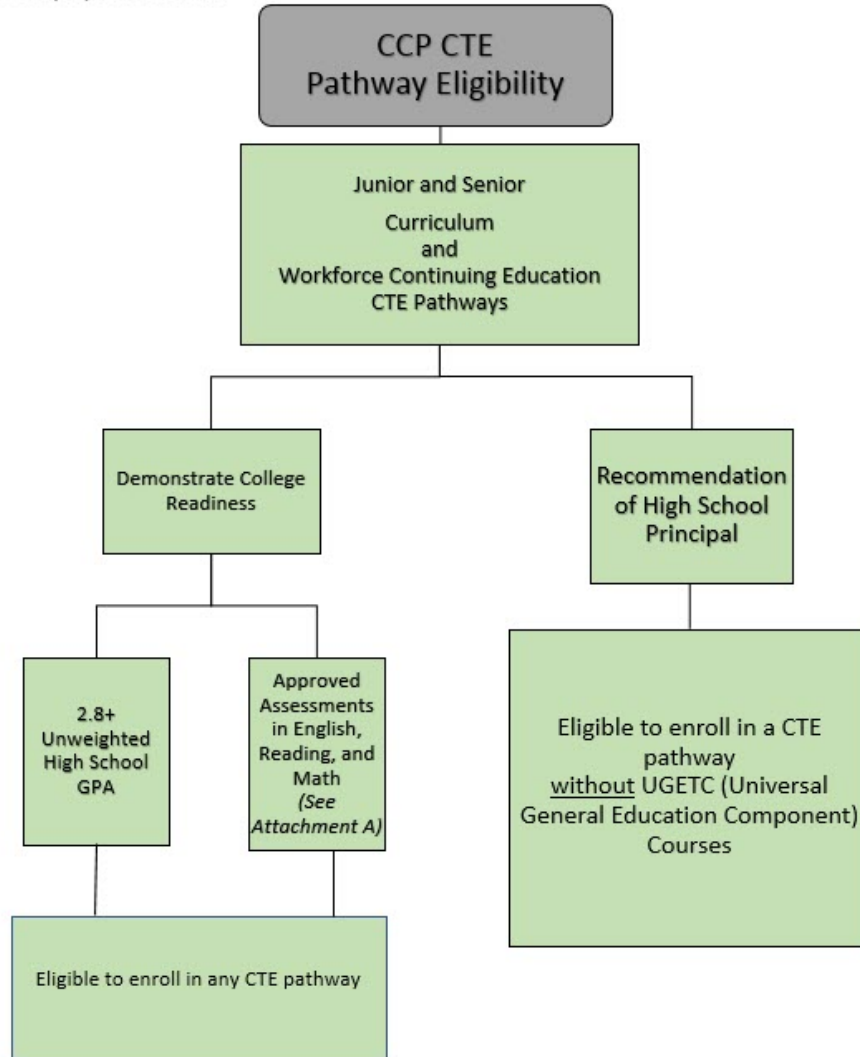


Summary of proposed eligibility changes to be effective Fall 2019:

- Transfer pathway students will have the option to qualify for the program with their unweighted high school GPA OR assessment scores from Attachment A.
- Attachment A has been updated to include the new ~~RISE~~ placement scores, AP, 18, and Cambridge as new assessment options for entry into the program.
- Provisional entry into transfer pathways will no longer exist because the requirement for GPA and assessment scores will become an OR instead of AND.
- CTE pathway students will have the option to qualify for the program with their **unweighted** high school GPA OR assessment scores from Attachment A.
- Principals (or their designee) may still submit a waiver to allow a student entry into a CTE pathway. If a waiver is submitted, the principal (or their designee) will need to provide a rationale for why the GPA requirement was waived. CTE pathways that include UGETC (Universal General Education Transfer Component) courses will not be eligible for the principal waiver/designee waiver for entry into the CCP program.
- CIP and CTE Pathway students who enroll in gateway English or math courses will have the option to enroll in the new English and math co-req courses once admitted, but they will not be required to do so (think of the co-requisites as optional gen ed).





NOTE: None of the WTCC CTE pathways contain UGETC courses.

•Program Eligibility Benchmarks on Approved Diagnostic Assessment Tests

Test	PSAT/Oand PSAT/NMSQT (2015 and Future)	SAT (March 2016 and Future}	Ptc- ACT and ACT	N\C OAP (NCCCS Cut Score)	RISE Plat:t'mcul Test
English	26 or a composite score of 460 for Evidenced-Based Reading and Writing	480 composite score for Evidenced-Based Reading and Writing	18	Composite score of 151 or higher	75 or higher on Tier 1 and Tier 2 (S# RJS! p{oum ft Ovid)
Reading	26 or a composite score of 460 for Evidenced-Based Reading and Writing		22		
Mathematics	24.5 or 510	530	22	7 on each assessment for)MA 010 thru 060	75 or higher on Tier 1 and Tier 2 and Tier 3 (S# RJS! ploc,m ft GWjf)
Advanced Placement (AP)		International Baccalaureate (18)		C•mbridge International Examination-s	
English, Language and Composition	3 or higher	IB English A (Standard or Higher level)	4 or higher	AS level English Lcnguage	C or higher
English, literature, and Composition	3 or higher	B Mathematics (Higher level)	4 or higher	A Level English Lcnguage	C or higher
Calculus AB	3 or higher	B Advanced Mathematics (Higher level)	4 or higher	AS level language and Literature in English	C or higher
Calculus BC	3 or higher	B Mathematical Studies (Standard level)	4 or higher	AS level Math	C or higher
o be eligible for enrollment in 1College Transfer Pathway, students must demonstrate college readiness in English, reading, and mathematics on an approved test or tests. Eligibilitv may be demonstrated by achieving the required scores on a single test or by combining test scores from any of the approved assessments. For exam.pie, a student may combine a 22 on ACT math with a 480 on SAT composite score for evidenced based reading and writinf to demonstrate colleee readiness.				A level Math	C or higher
				A level Mathematics - Further	C or higher