



Stormwater Management - Student Activity Sheet

Quantity: Is a stormwater management system needed?

CLH Design specializes in school site development and is contracted to develop stormwater management plans for the construction of South Lakes Elementary School. They have hired you to run the analysis for the pre- and post-development peak run-off of stormwater.

You need to analyze the pre-development peak run-off versus the post-development peak runoff at South Lakes Elementary School. This will allow you to determine if strategies need to be put in place for holding water back and releasing water at a slower, pre-development rate. Strategies for doing this include stormwater detention ponds (wetland), above-ground cisterns to capture roof runoff, and below ground cisterns to capture parking lot runoff.

In partnership with



WAKE COUNTY
PUBLIC SCHOOL SYSTEM



$$C = \frac{\sum (A_i C_i)}{\sum (A_i)}$$

$$Q = C \times i \times A$$

C: Weighted Average of **Runoff Coefficient**

A_i : Area of Soil Type [acre]

C_i : Runoff Coefficient of Soil Type

Q: Peak Runoff [cfs]

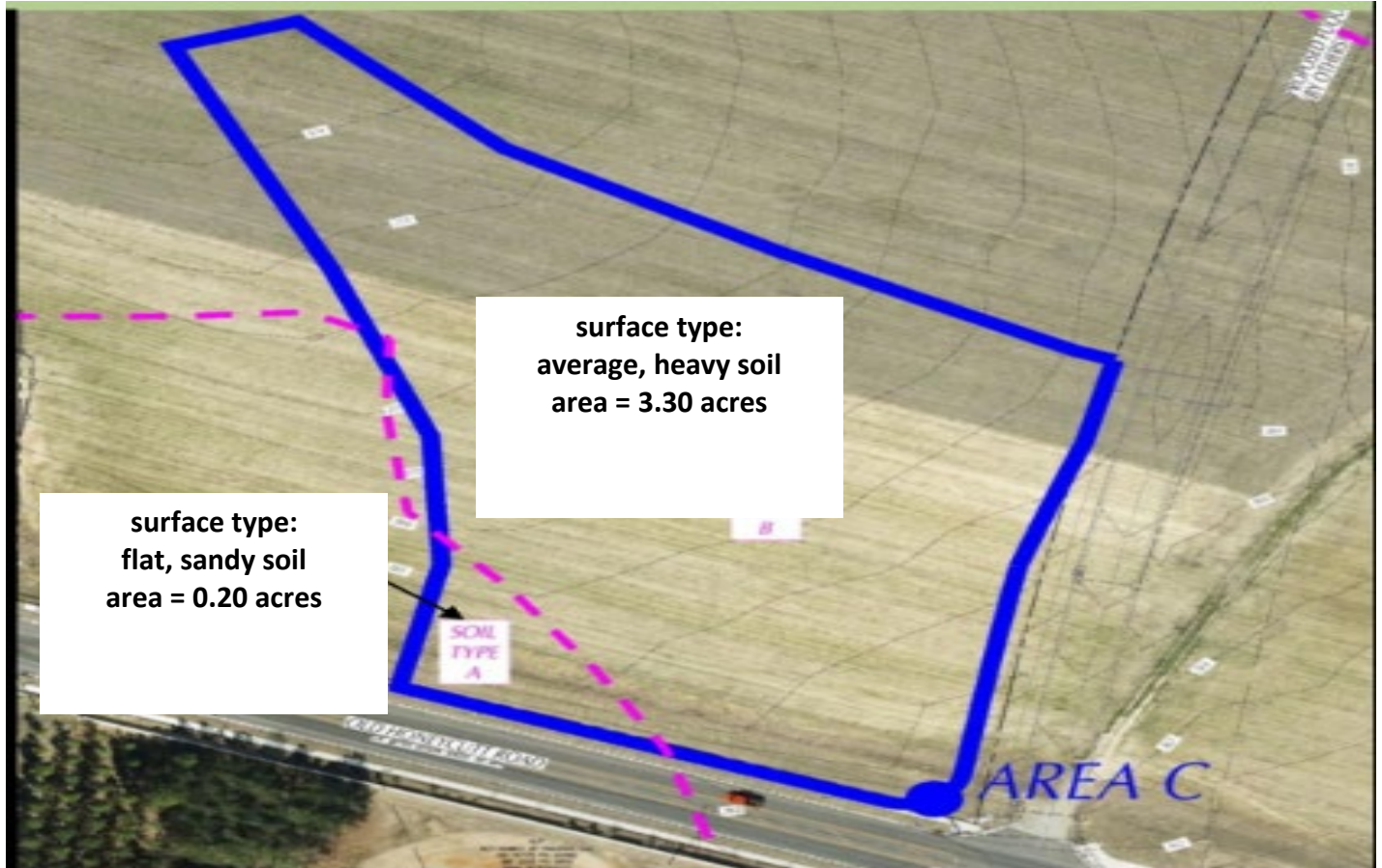
i : Rainfall Intensity of Design Storm
[in/hr] (7.08-in/hr. for Wake County)

A: Total Area

Description of Surface	Rational Runoff Coefficient, C	Water Penetration
Lawns, sandy soil, flat (<2%)	0.1	Pervious
Lawns, sandy soil, average (2-7%)	0.15	Pervious
Lawns, heavy soil, flat (<2%)	0.15	Pervious
Wooded areas	0.15	Pervious
Lawns, sandy soil, steep (>7%)	0.2	Pervious
Lawns, heavy soil, average (2-7%)	0.2	Pervious
Lawns, heavy soil, steep (>7%)	0.3	Pervious
Unimproved Areas	0.35	Pervious
Landscaped Areas	0.35	Pervious

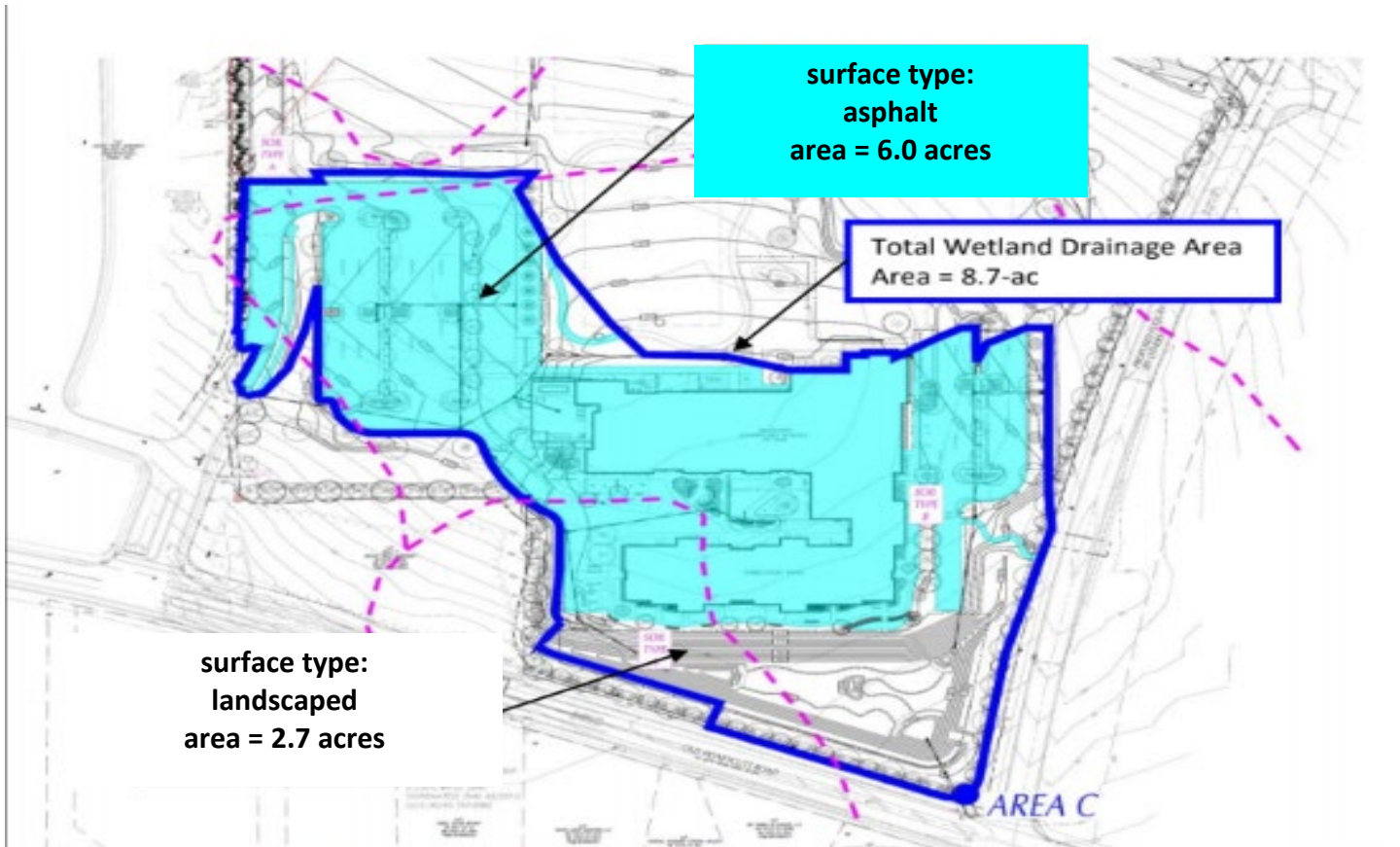
Brick	0.85	Impervious
Roofs, flat	0.9	Impervious
Asphalt	0.95	Impervious
Concrete	0.95	Impervious
Roofs, inclined	1	Impervious

Pre-Development



Post-Development

DK



Activity 1: Use the given pictures, reference charts, and functions to solve the following problems.

1. Identify the variables in the C function as dependent or independent. Identify the variables in the Q function as dependent or independent. How does the role of the C variable change from the first function to the second function?

2. Based on the images of the pre-development and post-development of South Lakes Elementary School, do you anticipate a stormwater management system being needed? Explain why or why not.

3. Determine the pre-development run-off coefficient for the marked area.

4. Determine the pre-development peak run-off for the marked area.

5. Determine the post-development run-off coefficient for the marked area.

6. Determine the post-development peak run-off for the marked area.

DRAFT

7. Analyze your results to determine if a stormwater management system is needed and explain why or why not.

8. Explain how this task relates to recent topics in class.

DRAFT

Activity 2: Now that you have determined a stormwater management system is needed, calculate the required wetland surface area and volume before you hand the project off to the landscape design architect team.

$R = 0.05 + 0.009 \times \% \text{ Impervious}$ $\% \text{ Impervious} = \frac{\text{Impervious Area within Wetland Drainage Area}}{\text{Total Area of Wetland Drainage Area}}$ <p>R: Runoff Value [in/in]</p> <p>*% Impervious: use actual percentage, not decimal equivalence, i.e. 4.25%, use 4.25 not 0.0425 **0.05 and 0.009 are industry given standard values</p>	
$V = \text{Design Storm} \times R \times \text{Drainage Area}$ <p>V: Volume Required [make sure result is measured in ft³] Design Storm: 1-in for Raleigh Drainage Area: Total Wetland Drainage Area [acre]</p> <p>*Note: Unit conversions are required (1-ac = 43,560 ft²)</p>	$SA = \frac{V}{d}$ <p>SA: Surface Area of Wetland [ft²] d: Depth = 15-inches maximum (industry standard)</p> <p>*Note: Unit conversions are required</p>

9. Calculate the volume and surface area of the wetland.

10. The landscape architect team has a design that provides **18,000 ft³** of volume for the wetland. Construct a proposal to the client justifying why the team's plan will or will not work.