
FACT



BOOK

Wake Technical Community College

*Office of
Institutional Effectiveness
&
Research*

APRIL 2008

WAKE TECHNICAL COMMUNITY COLLEGE 2008 FACT BOOK

TABLE OF CONTENTS

| | |
|----------------------------------------|-----------|
| Policy Statement..... | 1 |
| Purpose of this FACT BOOK | 2 |
| Mission Statement..... | 3 |
| Glossary | 5 |
| The College | 12 |
| Service Area: Wake County | 27 |
| Students | 28 |
| Continuing Education | 56 |
| Employees..... | 64 |
| Facilities..... | 67 |
| Comparisons..... | 76 |

POLICY STATEMENT

AFFIRMATIVE ACTION/EQUAL OPPORTUNITY

Wake Technical Community College offers Equal Employment and Educational Opportunities to all employees, students, prospective employees, and prospective students.

Affirmative Action, Equal Educational Opportunities, and Compliance with the Americans With Disabilities Act are viewed by the Board of Trustees as an integral part of the mission and purpose of Wake Technical Community College.

Questions concerning this policy should be addressed to:

STUDENT MATTERS:

Dean of Students
Wake Technical Community College
9101 Fayetteville Road
Raleigh, NC 27603-5696
(919) 866-5942

EMPLOYEE MATTERS:

Director of Human Resources
Wake Technical Community College
9101 Fayetteville Road
Raleigh, NC 27603-5696
(919) 866-5937

Individuals with disabilities who need assistance or require special accommodations to access College activities should request such services in advance by calling Disability Support Services at (919) 866-5670 or (919) 779-0668 (TDD).

PURPOSE OF THIS FACT BOOK

This **Fact Book** is designed to provide the public whom we serve, college administrators, planners, and other selected individuals such as trustees, local commissioners, legislators, and key college friends with an easily readable compilation of data about the College. While some historical information is included, the data and facts provide a profile of the College for one year. Accumulations of data, such as data for the last five years, are included as appropriate to illustrate change or percent of change.

This book has been compiled by the College's Office of Institutional Effectiveness under the direction of Dr. John B. Boone, Director of Institutional Effectiveness.

Every effort has been made to make the **FACT BOOK** as error-free as possible. However, it will be greatly appreciated if typographical errors, incorrect data, and suggestions for improving the **FACT BOOK** are forwarded to the Office of IIE, Research, & Events, Room 128, Holding Hall. Ms. Tammy Stephenson may be reached at 866-5931, Amanda Roberts at 866-5933 and Dr. John Boone at 866-5923.

This publication can also be found at the following web address:
<http://planningandresearch.waketech.edu/ie/factbook.php>

Southern Association of Colleges and Schools Accreditation

Wake Technical Community College is accredited by the Commission on Colleges of the Southern Association of Colleges and Schools (1866 Southern Lane; Decatur, Georgia 30033-4097; Telephone Number 404-679-4501) to award the associate degree.

MISSION STATEMENT

The mission of Wake Technical Community College is to help improve and enrich lives by meeting the lifelong educational, training, and service needs of its diverse community. The College is committed to promoting individual success in the workplace and higher education and to promoting cultural, social, and economic development.

In pursuit of its mission, this public two-year comprehensive postsecondary educational institution adheres to an open-door policy by offering quality accessible and affordable educational opportunities to all adults regardless of age, sex, socioeconomic status, ethnic origin, race, religion, or disability. To meet the needs of its community, the College focuses on providing support services, resources, community outreach, and partnerships; programs in basic skills development; vocational, technical, and occupational training; and college/university transfer preparation.

ROLE AND SCOPE

In order to implement its mission through clearly defined programs and services, the College:

offers credit programs leading to associate degrees, diplomas and certificates designed for immediate entry into employment, an associate degree in general education, and associate degrees designed to transfer to four-year institutions. The College also offers pre-curriculum programs for students to develop academic proficiency so that they may successfully complete curriculum courses.

provides occupational career enhancement programs for individuals and support for economic development to businesses, industries, and agencies. Basic skills education, English as a Second Language, and a wide variety of continuing education courses and programs for personal enrichment are offered on campus and throughout the county. The College further serves its constituents by providing a broad range of community services, partnerships and outreach programs.

provides a wide range of support services designed to assist students in successfully fulfilling their education and occupational goals. These services, developed to meet the diverse needs of individual students, begin with their initial contact with the College and continue throughout their enrollment and job placement or transfer for further study.

practices sound fiscal management and systematic planning to provide facilities, equipment, and state-of-the art technology to ensure quality education opportunities at secure facilities accessible to Wake County citizens.

OUR VISION

At Wake Technical Community College, our vision is a college that exceeds the expectations of its stakeholders for effective lifelong education and workforce training by providing world-class programs, services, and resources through an approach that models and teaches the core values of respect, responsibility, critical thinking, communication, and collaboration.

COLLEGE GOALS

Student Success

Provide a dynamic learning environment to ensure successful achievement of students' goals by administering sound policies, curricula, instruction and support services.

Workforce Development

In collaboration with *Regional Economic Development Partnerships*, identify the workforce needs of emerging jobs in rural and urban economies in North Carolina. Develop and implement the educational and training programs necessary to meet the workforce needs of each region and college services area and promote recruitment, retention and development of high quality faculty and staff necessary to achieve the educational and training objectives of the community college system and provide North Carolina with a world-class workforce.

Diverse Populations Learning Needs

Provide North Carolina citizens with the opportunity to develop essential skills for lifelong learning. Upgrade and retrain North Carolina learners for the workplace through flexible, accessible, customized educational and training programs within their communities.

Resources

Continuously research, analyze, and secure the resources necessary to fulfill the mission of the North Carolina Community College System and develop processes for measuring the effectiveness of resource allocations and utilization, within the North Carolina Community College System.

Technology

Encourage and support North Carolina Community College faculty and staff in the effective and efficient uses of instructional technology and administrative computing systems to improve the delivery of academic programs to North Carolina citizens.

Community Services

Provide courses and support service activities for the enrichment of the community's civic, economic, and cultural needs.

GLOSSARY

Academic Extension (non-credit) Courses consist of single courses, each complete in itself, designed to serve the academic educational needs of adult citizens.

Academic Semester - A sixteen week period during which credit classes are offered.

Academic Year - The academic year includes fall and spring semesters as well as an eleven-week summer term.

Accreditation - A formal means of recognizing an institution for maintaining standards that qualify the graduate for admission to higher institutions or for professional practice. Accrediting agencies are responsible for establishing the standards and evaluating the school's compliance with them (e.g., Southern Association of Colleges and Schools, American Dental Association, Engineering).

Accountability - The acceptance of personal responsibility for the achievement of predetermined measurable objectives.

Adult Education - Programs offered by a community college or technical institute that provide opportunities for adults and out-of-school youth to further their education.

Associate in Applied Science Programs - These programs range from 64 to 76 semester hour credits. A full-time student can typically complete one of these programs within two years. In addition to major course work, associate in applied science degree programs require a minimum of 15 semester hour credits of general education. General education requirements include course work in communications, humanities/fine arts, social/behavioral sciences and natural sciences/mathematics. Certain courses in associate degree programs may be accepted by a four-year college or university for transfer credit in an associated field.

Average Annual FTE - The annualized FTE of the fall and spring semesters added together for a given year.

Example: One full-time equivalent (FTE) student represents 16 student membership hours per week for 16 weeks or 256 student membership hours for each semester enrolled. Thus, if:

Fall Semester = $\frac{2,483,200}{512}$ membership hours = 4850 FTE
512 membership hours annualized
(256 X 2 semesters = 512)

Spring Semester = $\frac{2,380,800}{512}$ = 4650 FTE

Average Annual FTE = 4850 (Fall)
+4650 (Spring)
9500

Avocational Extension (non-credit) Courses consist of single courses, each complete in itself, which focus on an individual's personal or leisure needs rather than his occupation, profession, or employment.

Basic Skills - One of the primary missions of Wake Tech is to offer educational opportunities for adults 16 years of age and older who are out of school. Wake Tech provides educational opportunities through five major literacy components, consisting of classes located at work sites, churches, community centers, schools, libraries, sheltered workshops, prisons and the community college campuses.

Adult Basic Education (ABE) - A program of basic skills for adults, 16 years of age or older and out of school, who function at less than a high school level.

General Educational Development (GED) - A high school equivalency program enabling adults to take the General Education Development Tests to determine if they are at the 12th grade completion level of English, social studies, science, reading, and math. Individuals achieving the required scores on the GED are awarded the High School Equivalency Diploma. The program is open to individuals 18 years or older.

Adult High School (AHS) - A program of instruction offered cooperatively with local public school systems to help students earn an adult high school diploma.

English as a Second Language (ESL) - A program of instruction to help adults with limited or no English language proficiency.

Compensatory Education - A special state-funded educational program for developmentally handicapped adults (over 17 years of age).

Base Budget - Appropriations made by the Legislature to fund the current level of operation.

Capital Outlay - Capital outlay expenditures are those that result in the acquisition of fixed assets or additions to fixed assets (i.e., expenditures for land, buildings, or equipment).

Categorical Funds (restricted) - Funds from a federal, state, local, or private source that are restricted to expenditures in a particular category or program.

Certificate Programs - These programs range from 12 to 18 semester hour credits and can usually be completed within one semester by a full-time student. Associate degree level courses within a certificate program may also be applied toward a diploma or an associate in applied science degree.

Certification - A voluntary form of recognition for knowledge and skill in a particular profession.

Clock Hour - One hour of instruction given one student. Class periods from 50-60 minutes may be counted as one clock hour depending on the type of instruction delivered.

College Transfer Programs - These programs are offered through the Associate in Arts, Associate in Fine Arts and Associate in Science degrees. The Associate in Arts and the Associate in Science programs are part of the Comprehensive Articulation Agreement (CAA). This agreement addresses the transfer of students between institutions in the North Carolina Community College System and the constituent institutions of the University of North Carolina System.

Community Service Programs consist of those continuing education (extension) programs that are directed to the academic, avocational, and development of personal skills of the community.

Competency-Based Instruction - Instruction based on measurable student performance outcomes consistent with the skills and knowledge needed by entry-level employees in a particular field.

Continuing Education/Extension Programs include New and Expanding Industry, and Self-Supporting Recreational programs in addition to the Regular Budget Extension program areas of Adult High School, Academic Extension, Avocational Extension, Occupational Extension, Practical Skills, Adult Basic Education and Compensatory Education.

Credit Hour - An instructional unit used for recognition of the amount of credit a student earns for a given course. Example: Semester Credit Hour - A student who spends one classroom hour per week in a class for sixteen weeks earns one semester hour credit.

Current Expense - Funds used for the general operation of the institution to include salaries, benefits, and other instructional costs.

Curriculum Programs - A term used to describe a wide variety of planned educational programs which range in length from one semester to two years. The programs lead to certificates, diplomas or associate degrees, depending on the nature of the curriculum. Curriculum programs include certificate, diploma, Associate in Applied Science, Associate in Arts, Associate in Fine Arts, Associate in Science and Associate in General Education programs.

Developmental Education - A program providing specialized credit courses for students who need to improve their basic skill in order to perform at the level required for admission to degree and diploma programs. Usually these courses are in reading, writing, and mathematics.

Diploma Programs - These programs range from 36 to 48 semester hour credits and can usually be completed by a full-time student within two semesters and one summer term. Associate degree level courses within a diploma program may also be applied toward an Associate in Applied Science degree.

English as a Foreign Language (EFL) A pre-curriculum program designed to help non-native speaking students acquire sufficient skills in English to enter and succeed in curriculum (academic) programs. These courses are available only on Wake Tech's 401 South Campus.

English as a Second Language (ESL) - A program of instruction to help adults with limited or no English language proficiency. These courses are usually offered through continuing education at off-campus sites for students who have non-academic goals such as improvement of job performance, better communication with family members or the general public, etc.

Expansion Budget - Additional funds from the Legislature to increase the quantity or quality of services rendered.

Fiscal Year - The twelve-month period upon which the institution's budget is based, July 1 - June 30.

Full-Time Equivalent (FTE) - One full-time equivalent (FTE) student represents 16 student membership hours per week for 16 weeks or 256 student membership hours for each semester enrolled.

Annual Curriculum FTE - The total of fall and spring FTE.

Annual Extension FTE - The total of spring, summer and fall sequenced periods FTE.

Budget Full-Time Equivalent (B/FTE) - Used to prepare the operating budget and to provide for an equitable distribution of the operating funds allocated by the State Board to the institutions.

Equipment Full-Time Equivalent (E/FTE) - Used to prepare the equipment budget and to provide for an equitable distribution of the equipment funds allocated by the State Board to the institutions.

Library Full-Time Equivalent (L/FTE) - Used to prepare the library budget to provide for an equitable distribution of library funds allocated for the purchase of library books and audiovisual materials.

Credit Hour Full-Time Equivalent (H/FTE) - Used in furnishing data to the North Carolina Commission on Higher Education Facilities and the University of North Carolina.

Construction Full-Time Equivalent (C/FTE) - Used to determine priorities and institutional eligibility for federal and state construction funds for the institutions.

Full-Time Students - A student is considered full time if he/she carries 12 or more semester credit hours of classes.

General Education Programs - These programs are designed for individuals wishing to broaden their education, with emphasis on personal interest, growth and development. The two-year General Education program provides students opportunities to study English, literature, fine arts, philosophy, social science, science and mathematics at the college level. All courses in the program are college-level courses. Many of the courses are equivalent to college transfer courses; however, the program is not principally designed for college transfer. Successful completion of 64-65 semester hour credits leads to an associate in general education degree.

Human Resources Development (HRD) - A program for chronically unemployed adults with prevocational training and counseling.

Job Training Partnership Act (JTPA) - A federal program designed to provide job training and employment opportunities for economically disadvantaged, unemployed, or underemployed persons.

Learning Laboratory Programs (Center) consists of resources to help students succeed in their courses of study at Wake Tech. A learning lab coordinator or instructor offers one-on-one tutorial assistance, combined with a variety of other techniques and materials such as audiovisual and computer equipment and self-instructional materials, in an effort to help students learn.

New and Expanding Industry Programs provide for the training needs of new industries which are moving into the state and also for existing industries undergoing a major expansion which result in the need for additional skilled manpower.

Non-Credit (Extension) Courses - Courses for professional training, upgrading or general interest.

Occupational Education - Any type of instruction or training (credit or non-credit) that prepares one to enter an occupation.

Other Costs - A term used to describe current instructional and operating instructional support costs excluding personnel and the associated fringe benefits. The term is used for supplies, travel, postage, etc.

Pell Grants - Needs-based federally funded grants.

Practical Skills Extension (non-credit) Programs consist of single courses each complete in itself, designed to provide practical training for persons pursuing additional skills which are not considered their major primary vocation but may supplement income or may reasonably lead to employment.

Regular Budget Extension Programs include Adult High School, Occupational Extension, Adult Basic Education and Compensatory Education.

Self-Supporting Recreational Programs are self-supporting courses which the college may provide at the request of the community but for which the college receives no budgetary credit.

Unduplicated Headcount - The total number of students (both full-time and part-time) enrolled in all courses during a year. Each student is counted only once during the year regardless of the number of classes he/she takes or the number of semesters for which he/she registers.

Source: A Matter of Facts, The North Carolina Community College System Fact Book, 2008.

Annual Statistical Report, 2006-2007, North Carolina Community College System.



The College

HISTORY

Wake Technical Community College is a public educational institution, nonprofit and tax supported, under the control of a Board of Trustees. It is an institutional member of the North Carolina System of Community Colleges, State Board of Community Colleges. Authority for the establishment of the College is found in Chapter 115D of the General Statutes of North Carolina and the amendments thereto.

The College was chartered April 3, 1958, as the Wake County Industrial Education Center under the governance of the Wake County Board of Education. In 1961, the Board employed Dr. Kenneth M. Wold as the Center's first Director and charged him with the responsibility of "developing a program of training for adults."

Because there was no central training facility, the first training efforts were conducted in cooperation with employers and users of the training. Practical nursing classes, for example, were held at Wake Memorial Hospital; fire prevention and lifesaving classes were held among area fire departments; and instruction in machine operating and supervision was provided at industrial locations.

On October 7, 1963, operation of the Center began at its present location in a single building of 40,795 square feet and costing \$560,000. There were 34 full-time students enrolled in classes on campus and an additional 270 enrolled in industrial training programs at locations throughout the County.

On January 8, 1964, the Center was formally dedicated as the W. W. Holding Industrial Education Center and was transferred from the authority of the Board of Education to an eight-member Board of Trustees.

In September 1965, Dr. Kenneth M. Wold resigned as Director, and Robert W. LeMay, Jr., head of the Center's general adult and community service programs, was named Acting Director. Mr. LeMay was named President on February 16, 1966.

On March 3, 1966, W. W. Holding Industrial Education Center was granted approval by the State Board of Education as the W. W. Holding Technical Institute.

The name was changed to Wake Technical Institute in 1974 and to Wake Technical College on March 1, 1980. The name was changed to Wake Technical Community College on December 1, 1987, to better reflect the college-level instruction that is provided.

Robert W. LeMay, Jr., served as President through June 30, 1979, at which time James A. Cox, the College's Vice President for Administration, was appointed temporary President. He served until June 30, 1980.

Dr. Bruce I. Howell was named the College's third President on July 1, 1980.

The College entered a contractual agreement with the University of North Carolina at Greensboro to offer college transfer courses in the fall of 1991. Subsequently, a college transfer program was approved to be offered by Wake Tech in the fall quarter of 1992. Students enrolled in the College Transfer program earn Associate in Arts and Associate in Science degrees. The College became a fully comprehensive community college in the fall of 1992.

The Wake Technical Community College News and Observer Adult Education Center formally opened in August 1993. The Center was made possible through a \$100,000 gift from the News and Observer Foundation. Located on Capital Boulevard, the Center provides a home for the College's basic skills program, one of the largest in the North Carolina Community College System.

Wake Tech's share of county and state bond referendums held in 1993 was \$41 million. These funds were designated to build a student education/classroom building, connect the main campus to Fuquay-Varina's waste water treatment plant, construct a parking deck at the Health Education Campus, and renovate and repair existing facilities. During the summer of 1994, construction began on the student education/classroom building, and it was opened on December 3, 1996.

In January 1994, Wake Tech acquired 132 acres of land on Highway 401 North for a site for a northeast Wake County campus. This campus will serve the residents of northern Wake County. Wake Tech was designated a multi-campus college by the State Board of Community Colleges on February 16, 1996.

After a two-year in-depth self-study and an on-site visit by collegiate peers from across the southeastern United States in March 1995, Wake Tech's accreditation to award the associate degree was reaffirmed by the Commission on Colleges of the Southern Association of Colleges and Schools for another ten years.

In the fall of 1997, Wake Tech, along with the other 57 colleges of the North Carolina Community College System, converted from the quarter system to the semester system.

On June 19, 1998, the State Board of Community Colleges approved Wake Tech's request to change the Allied Health Center to the Health Sciences Campus.

In 2001 Wake Tech purchased 12 acres adjacent to Tech Road (SR 2811) and the US 401 South Main Campus for the construction of additional parking spaces for faculty, staff and students.

In 2002 Wake Tech along with several other community colleges (Edgecombe, Johnston, Nash, Wayne, and Wilson) opened the Eastern North

Carolina Plastics Technology Center in Zebulon (Wake County). This 8,000 square foot building will house the specialized laboratory courses associated with the Manufacturing Technology/Plastics Program at each of these six institutions.

On October 15, 2003, Dr. Bruce I. Howell retired, as President of Wake Technical Community College and Dr. Stephen C. Scott became the College's fourth President.

In December 2005 the Commission on Colleges of the Southern Association of Colleges and Schools reaffirmed Wake Technical Community College's accreditation for another ten years.

In March 2008 the College hosted a Substantive Change Committee from the Commission on Colleges of the Southern Association of Colleges and Schools to review the new North and Western Wake Campuses.

FACILITIES GROWTH

When Wake Tech opened in 1963, there was one building of 40,795 square feet on a 30.8 acre tract. This building, named in honor of W. W. Holding, a long-time member of the Wake County Board of County Commissioners, was twice enlarged to its present size of 43,348 square feet.

In 1966-67, a maintenance shop and a laboratory building of 8,990 square feet were added to the campus. Additional property was purchased between 1968 and 1972, which increased the campus size to 76.64 acres.

In 1968, the business education building of 22,540 was constructed and named in honor of Leo Pucher, the College's first Board of Trustees Chairman who was also instrumental in founding the College. Also, vocational laboratories were expanded in 1968 and a 36,405 square-foot addition, which was named in honor of Dr. I. E. Ready who was Director of the Department of Community Colleges, was completed.

Two buildings and approximately 3.5 acres adjacent to Wake Medical Center were dedicated in 1972 by the Wake County Commissioners for health education. Subsequently, a power mechanics laboratory building was completed in 1974 on the main campus.

By 1975, a student services building of 28,066 square feet was constructed for the rapidly increasing student body. This facility was named in honor of Robert W. LeMay who served as President from 1966 until 1979.

Maintenance and storage facilities were added in 1980.

The technical education building, occupied in 1982, provides 40,860 square feet of classroom, laboratory and auditorium space for the conduct of technical education.

The College continued to grow with an 8,320 square-foot microelectronics laboratory addition completed in early 1984.

A mechanical technology building was completed in 1987. In approximately 16,980 square feet of space, this building provides space for a machine shop, two automation/robotics laboratories, and three classrooms.

In late 1988, construction was completed on a 84,000 square-foot library education building. This building features a 28,000 square-foot library with study rooms, drafting and typing labs; an enlarged audiovisual area with a new studio and two darkrooms; two architectural drafting labs; and 36 additional classrooms.

The 1990-91 school year was a busy one for campus construction. A 16,600 square-foot child care center was completed. It includes classrooms, offices, child care areas, and a full-service kitchen. Also, a 32,000 square-foot health education building that houses a library, offices, classrooms, and laboratories was completed. Additional parking was provided for both facilities.

In August 1993, the College, with the assistance of a \$100,000 gift from the News and Observer Foundation, opened the News and Observer Adult Education Center. Located on Capital Boulevard, the Center provides a home for the College's basic skills program, one of the largest in the North Carolina Community College System. The 21,545 square-foot leased building, previously occupied by Hardbarger Business College, includes 12 classrooms, three computer labs, a student lounge, ten offices, a seminar/conference room, and a full resource center with individualized learning materials.

In 1996, Wake Tech opened a parking deck at the Health Sciences Campus and a 110,000 square-foot Student Education building on Main Campus. The Student Education building houses the Hotel and Restaurant Management and Culinary Arts programs and the kitchens and other facilities necessary for those programs, a conference center, and new cafeteria.

During the summer of 1998, the College purchased the Wells Furniture Company property at the corner of U.S. 401 south and Tech Road (SR 2811). This adds 14,200 square feet to the College's facilities inventory.

In the Spring 2000, Wake Tech opened the Business and Industry Center located at 600 New Waverly Place, Cary. The 14,963 square-foot leased building includes five computer labs, three classrooms, two conference rooms and ten offices.

In 2001 Wake Tech purchased 12 acres and constructed additional parking spaces adjacent to Tech Road (SR 2811) behind the Wells Furniture Company property.

In 2002 Wake Tech along with several other community colleges (Edgecombe, Johnston, Nash, Wayne, and Wilson) opened the Eastern North Carolina Plastics Technology Center in Zebulon (Wake County). This 8,000 square foot building will house the specialized laboratory courses associated with the Manufacturing Technology/Plastics Program at each of these six institutions.

In 2003, a 75,279 square-foot health sciences building was completed as well as an 86,500 square-foot engineering technology building on the main campus.

In 2004, the Automotive and Heavy Equipment Technology Complex (40,906 square feet) was completed on the main campus.

In 2005, a 30,000 square foot classroom/office addition was completed between Pucher and LeMay Halls connecting the two buildings. The complex was renamed Pucher-LeMay Hall. Also, the college purchased office buildings off of Chapanoke Road and is now in the process of renovating the building (100,000 square footage) for future classroom and office space. Wake Technical Community College also moved its Business and Industry Center to another location in Cary in order to expand the college's curriculum and continuing education programs in the western section of the county. This new Western Wake Center opened prior to the Fall 2005 semester and encompasses 36,000 square feet (leased space) at the intersection of Kildaire Farm Road and Ten-Ten Road.

In August 2007 Wake Tech opened its Northern Wake Campus at 6600 Louisburg Road which includes an Administration Building (AB), a Math and Science Building (MSB), and a Regional Plant (RP). The three buildings total 134,480 square feet. Wake Tech also completed the first stage of renovation (18,000 square feet) of the 100,000 square foot Public Safety Training Center at 321 Chapanoke Road. Continuing Education programs began moving into the facility in late 2007.

| MEMBERS OF THE BOARD OF TRUSTEES | |
|------------------------------------------------------------------------------------------------|-------------------------------------------------|
| NAME, PHONE, FAX, E-MAIL | EXPIRATION DATE AND AGENCY APPOINTING |
| Dr. William K. Atkinson (B) 350-8112 Fax : 350-2847 E-mail : batkinson@wakemed.org | June 30, 2009 Wake County Board of Education |
| Mrs. Wanda W. Denning Fax: 552-0980 E-mail: wwden@aol.com | June 30, 2009 Wake County Commissioners |
| Dr. Benjamin D. Reese, Jr. (B) 919-684-8229 Fax: 919-684-8580 E-mail: ben.reese@duke.edu | June 30, 2009 Governor |
| Mrs. Sheila H. Ogle (B) 468-1000 Fax: 468-1956 E-mail: shogle@mrppinc.com | June 30, 2011 Wake County Board of Education |
| Mr. Gary B. Jordan (B) 754-4467 Fax: 754-3701 E-mail: gjordan@redhat.com | June 30, 2010 Governor |
| Mr. Harvey L. Montague (B) 362-7477 Fax: 387-8871 E-mail: montaguebldg@earthlink.net | June 30, 2008 Wake County Board of Education |
| Mr. J. Anthony (Andy) Penry (B) 833-9449 Fax : 833-9448 E-mail : andy.penry@tprr.com | June 30, 2008 Governor |
| Mr. James E. Herbst (B) 362-8831 Fax : 362-8793 E-mail : jherbst@henrywurst.com | June 30, 2008 Wake County Commissioners |
| Mr. Ronald G. Wainwright, Jr. (B) 781-1458 Fax: 787-1387 E-mail: ronald.wainwright@rsmi.com | June 30, 2011 Wake County Commissioners |
| Mr. Jim W. Perry (Chair) (B) 325-3000 Fax: 919-325-3013 E-mail: jimp@waste-ind.com | June 30, 2010 Wake County Board of Education |
| Mr. R. Keith Shackelford (B) 556-3134 Fax: 556-8366 E-mail: rkshack@wpalaw.com | June 30, 2010 Wake County Commissioners |
| Mr. Gary J. Salamido (B) 854-5556 Fax: 854-5509 E-mail: gary.j.salamido@gsk.com | June 30, 2011 Governor |
| Mr. Juan Hoyos (SGA) Juanmartinhoyos9@hotmail.com | President, SGA Ex Officio, Non Voting |
| Dr. Stephen C. Scott (B) 866-5141 Fax: 662-3123 E-mail: scscott@waketech.edu | Secretary of the Board of Trustees |

WAKE TECHNICAL COMMUNITY COLLEGE FOUNDATION, INC.

Wake Technical Community College Foundation is a 501 (c) (3) nonprofit corporation established to serve as a conduit for a strong financial partnership with the private sector, supporting the community mission of Wake Technical Community College with gifts of cash and in-kind contributions of equipment and services that enhance the College's ability to fulfill its mission.

A 20-member Board of Directors comprised of community and business leaders in the Triangle area promote and administer a variety of funds from the private sector, including:

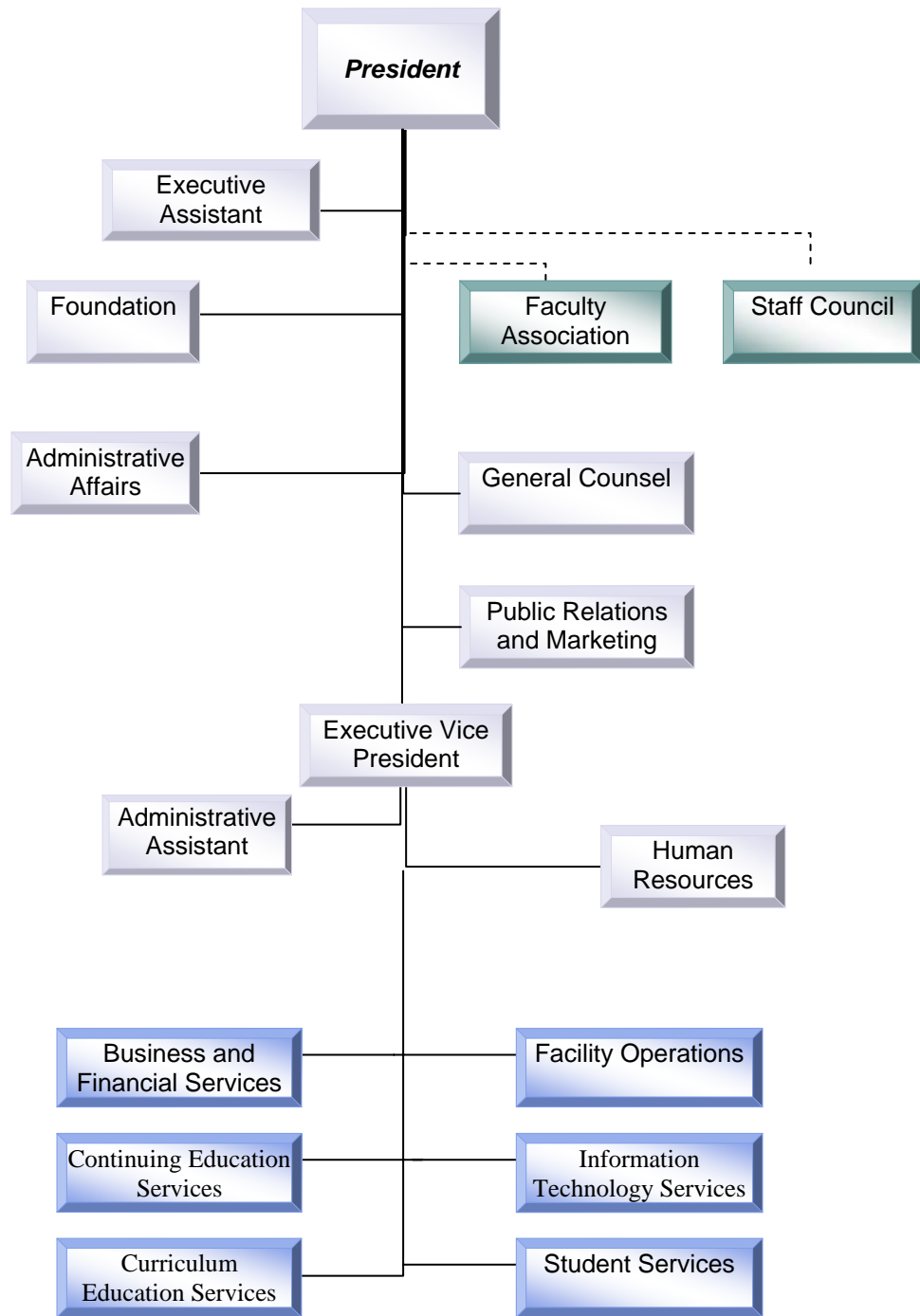
The Wake Tech Fund is the general fund that supports programs that receive limited or no support from traditional tax revenues, including institutional opportunities, student scholarships, financial aid grants, professional development needs of faculty and staff, the acquisition of state-of-the-art equipment and other areas that elevate the College's service role in the community to a greater prominence.

Donor-Restricted Funds benefit the interests of the donor as well as the College by providing restricted gifts to specific academic programs and scholarships that accommodate and address certain employment needs.

Endowment Funds are often established through various estate or major gifts which qualify for special tax consideration, creating permanent funds from which the interest income can be allocated to a specific area or serve as a source of supplemental revenues to state and local taxation.

Gifts-in-Kind from business and industry enhance and improve the quality of Wake Tech's instructional programs and labs with equipment that keeps technology current and instruction up to industry standards.

Since 1988, corporations, businesses, alumni, friends, trustees and employees have strengthened Wake Tech's programs with cash and noncash gifts to Wake Technical Community College Foundation totaling over \$8 million.



Degrees, Diplomas, & Certificates

Wake Technical Community College awards numerous degree, diploma, and certificate programs in a variety of fields.

Website: <http://currred.waketech.edu/>

Coding

Example: **D** Automotive Systems Technology A60160
D = This class is only offered in the day.

Program is offered:

D = Day

E = Evening

B = Both Day & Evening

* = Distance Education

A = All the above

† = Not open to new students

Degrees

COLLEGE/UNIVERSITY TRANSFER

The College/University Transfer program is designed for the person who wishes to transfer to a four-year institution. The program offers three degrees, the Associate in Arts, the Associate in Science, and the Associate in Science – Pre-Major: Engineering. By enrolling in this program, the student may complete course work equivalent to the general education requirements for the bachelor's degree at a senior institution.

The Associate in Arts or the Associate in Science is awarded upon successful completion of 64 hours, including the minimum in each of the areas indicated on the curriculum outline.

- A A.A. = Associate in Arts - A10100
- B A.S. = Associate in Science – A10400
- B A.S. = Associate in Science
– Pre-Major: Engineering A1040D

GENERAL EDUCATION

The General Education curriculum is designed for individuals who wish to broaden their education, with emphasis on personal growth, intellectual enrichment, and improvement in general knowledge. The curriculum provides an introduction to the liberal arts (general education) in a program that can be tailored to the student's personal interests rather than to specific technical or professional requirements.

The Associate in General Education is awarded upon completion of 64 hours, including the minimum in each of the areas on the curriculum outline.

- B A.G.E. = Associate in General Education

ASSOCIATE IN APPLIED SCIENCE

A.A.S. = Associate in Applied Science

Applied Technologies

- D Air Conditioning, Heating and Refrigeration Technology A35100
- D Automotive Systems Technology A60160
- D Construction Management Technology A35190
- D Cosmetology A55140
- D Electrical/Electronics Technology A35220
- D Heavy Equipment and Transport Technology A60240
- D Heavy Equipment and Transport Technology/Agricultural Systems A6024A

Applied Technologies (continued)

- D Heavy Equipment and Transport Technology/Construction Equipment Systems A6024B
- D Mechanical Drafting Technology A50340

Business Technologies

- B Accounting A25100
- B Business Administration A25120
- B Business Administration/Human Resources Management A2512C
- A Criminal Justice Technology A55180
- D Criminal Justice Technology/Latent Evidence A5518A
- D Culinary Technology A55200
- B Early Childhood Associate A55220
- D Hotel and Restaurant Management A25240
- D Medical Office Administration A25310
- D* Office Systems Technology A25360
- * Office Systems Technology/Legal A2636A

Computer and Engineering Technologies

- B Advertising and Graphic Design A30100
- D Architectural Technology A40100
- D BioPharmaceutical Technology A20180
- B Civil Engineering Technology A40140
- B Computer Engineering Technology A40160
- B Computer Information Technology A25260
- A Computer Programming A25130
- B Database Management A25150
- B Electronics Engineering Technology A40200
- D Environmental Science Technology A20140
- B Industrial Engineering Technology A40240
- B Information Systems Security A25270
- D Landscape Architecture Technology A40260
- B Mechanical Engineering Technology A40320
- B Networking Technology A25340
- B Pre-Engineering A1040D
- B Simulation and Game Development A25450
- B Surveying Technology A40380
- * Web Technologies A25290

Health Sciences

- D Associate Degree Nursing A45120
- D Dental Hygiene A45260
- D Emergency Medical Science A45340
- B General Occupational Technology A55280
- B Human Services Technology A45380
- B Human Services Technology/Developmental Disabilities A4538A
- B Human Services Technology/Substance Abuse A4538E
- D Medical Assisting A45400
- D Medical Laboratory Technology A45420
- D Radiography A45700

Collaborative Agreements

- Court Reporting and Captioning A25140
 - Collaborative with Lenior Community College
- Electric Lineman Technology A35210
 - Collaborative with Nash Community College
- Global Logistics Technology A25170
 - Collaborative with Lenoir Community College

Diplomas

Applied Technologies

- B Air Conditioning, Heating, and Refrigeration Technology D35100A
- D Electrical/Electronics Technology D35220A
- D Heavy Equipment and Transport Technology/Construction Equipment Systems D6024BA
- D Mechanical Drafting Technology D50340A
- D Plumbing D35300
- D Welding Technology D50420A

Business Technologies

- B Early Childhood Associate D55220A
- D Food Service Technology (Prison Only) D55250
- A Office Systems Technology D25360A

College/University Transfer

- A Transfer Core Diploma (Arts) D10100
- B Transfer Core Diploma (Science) D10400

Computer and Engineering Technologies

- B Simulation and Game Development D25450A
- B Simulation and Game Development: Modeling and Design D25450B

Health Sciences

- D Computed Tomography and Magnetic Resonance Imaging Technology D45200
- D Dental Assisting D45240
- D Medical Assisting D45400
- D Pharmacy Technology D45580
- D Surgical Technology D45740
- D Therapeutic Massage D45750

Collaborative Agreements

Interventional Cardiac & Vascular Technology D45410
Collaborative with Johnston, Edgecombe, and
Fayetteville Community Colleges

Certificates

Applied Technologies

- B Air Conditioning, Heating, and Refrigeration C35100B
- B Basic Law Enforcement Training C55120
- B Construction Management Technology C35190B
- B Electrical/Electronics Technology: Commercial Wiring Methods C35220C
- B Electrical/Electronics Technology: Residential Wiring Methods C35220B
- B Heavy Equipment and Transport Technology/ Construction Equipment Systems: Fuel Injection, Electrical, and Electronics C6024BC
- B Heavy Equipment and Transport Technology/ Construction Equipment Systems: Hydraulics, Engines, and Transmissions C6024BB
- E Machining Technology C50300B
- B Mechanical Drafting Technology C50340B
- B Plumbing Applications and Diagrams C35300A
- D Plumbing: Modern Plumbing Codes and Blueprint Reading C35300B
- B Welding Technology C50420B

Business Technologies

- A Accounting: Payroll Accounting Clerk C25100A
- B Accounting: Income Tax Preparer C25100B
- B Business Administration: Customer Service C25120B
- D Business Administration: E-Commerce C25121A
- D Business Administration: Entrepreneurship C25120C
- B Business Administration: Sales Development C25120A
- E Business Administration/Human Resources Management C2512CA
- B Culinary Technology C55200A
- D Culinary Technology: Baking C55200B
- B Early Childhood Associate C55220B
- B Early Childhood Associate: Infant/Toddler Care C55220C
- D Food Service Technology (Prison Only) C55250
- D Hotel and Restaurant Management: Hotel Management C25240A
- D Hotel and Restaurant Management: Restaurant Management C25240B
- A Medical Office Administration: Medical Office Specialist C25310A
- E Medical Office Administration: Medical Billing and Coding C25310B
- E Medical Office Administration: Medical Transcription Specialist C25310C
- * Office Systems Technology: Word Processing & Publications C25360E
- A Office Systems Technology: Office Specialist C25360F
- * Office Systems Technology/Legal C2536AA
- E Real Estate Appraisal C25420
- E Real Estate Licensing C25480

Computer and Engineering Technologies

- * Advertising and Graphic Design: Graphics and Design C30100A
- * Advertising and Graphic Design: Web and Graphic Design C30100B
- D Advertising and Graphic Design: Digital Media C30100C
- B Architectural Technology: Architectural CAD C40100A
- B Civil Engineering Technology: Civil Design C40140A
- B Computer Engineering Technology: C- Programming – Open Source Development C40160B
- B Computer Information Technology: Computer Forensics C25260J
- B Computer Information Technology: Hardware Troubleshooting C25260G
- B Computer Information Technology: IT Support Management C25260L
- A Computer Information Technology: IT Foundations C25260M
- B Computer Information Technology: IT Support Technician C25260K
- A Computer Information Technology: MCAS C25260A
- A Computer Information Technology: Spreadsheet Specialist C25260E
- A Computer Programming: C++ Programming C25130C
- A Computer Programming: Computer Science C25130E
- A Computer Programming: JAVA Programming C25130A
- A Computer Programming: Visual BASIC Programming C25130B
- A Computer Programming: Visual C# Programming C25130D
- A Database Management: MySQL Developer C25150C
- A Database Management: Oracle DBA Programming C25150B
- A Database Management: Oracle Developer C25150A
- B Electronics Engineering Technology: Basic Electronics C40200A
- B Electronics Engineering Technology: PLC Programming C40200B
- B Electronics Engineering Technology: Robotics C40200C
- B High Performance Computing: Bioinformatics Computing C25230B
- B High Performance Computing: Linux/Red Hat Administration C25230C
- A Industrial Engineering Technology: Advanced Quality C40240C
- A Industrial Engineering Technology: Industrial Management C40240A
- A Industrial Engineering Technology: Manufacturing Process Control C40240D
- A Industrial Engineering Technology: Quality Assurance C40240B
- B Information Systems Security: Network Security Admin. C25270A
- D Landscape Architecture Technology: Landscape Architecture C40260A
- A Mechanical Engineering Technology: Mechanical Design C40320B
- A Mechanical Engineering Technology: Thermal Mechanics C40320C
- A Mechanical Engineering Technology: Materials Engineering C40320D
- A Mechanical Engineering Technology: Engineering Management C40320E
- A Mechanical Engineering Technology: Engineering Fundamentals C40320F
- B Networking Technology: Cisco Certified Network Associate (CCNA) C25340C
- B Networking Technology: Cisco Certified Network Professional (CCNP) C25340I
- A Networking Technology: Microsoft Certified Systems Administrator (MCSA) C25340J
- B Simulation and Game Development: Modeling and Animation C25450A
- B Simulation and Game Development: Production C25450B
- * Web Technologies: E-Commerce Programming C25290B
- * Web Technologies: Web Designer C25290C
- * Web Technologies: Web Developer C25290A

Health Sciences

- D Computed Tomography Technology C45200A
- B Human Services Technology C45380
- B Human Services Technology: Developmental Disabilities C4538A
- B Human Services Technology: Substance Abuse C4538E
- D Magnetic Resonance Imaging Technology C45200B
- D Phlebotomy C45600

Collaborative Agreements

GIS/GPS – Geographic Information Science – C40220-C1
-- Collaborative with Central Piedmont Community College

Simulation and Game Development: -- Level III Instruction Service Agreement with Pitt Community College, Nash Community College, Surry Community College, Wayne Community College, and Fayetteville Technical Community College.

Special Notes

Students should contact their advisors for updates to program offerings. Students admitted to programs that require a clinical or co-op component may be required to provide the college with an official criminal background check in order to meet the requirements of the clinical or co-op site. Convictions for certain crimes and/or evidence of drug use may disqualify students for participating in clinical or co-op experiences, which would limit their progress toward graduation.

Changes may have been made since the printing of the catalog. Students should be in contact with their advisors for updates. Selected Topics and Seminar courses are designed to provide students the opportunity to explore areas of current interest appropriate to the discipline. Course content varies and may include an introduction to emerging technologies, advanced topics, preparation for an appropriate certification examination and may require appropriate pre- and corequisites.

**WAKE TECHNICAL COMMUNITY COLLEGE
FUNDING GROWTH LAST 10 YEARS**

Educational and General Expenditures by Source of Funds

| Year | State | % | County | % | Other | % | Total |
|-------------|--------------|----------|---------------|----------|--------------|----------|--------------|
| 1998-99 | 23,827,482 | 72.00 | 6,800,000 | 20.00 | 2,594,776 | 8.00 | 33,222,258 |
| 1999-00 | 27,968,018 | 72.00 | 7,202,000 | 19.00 | 3,383,705 | 9.00 | 38,553,723 |
| 2000-01 | 31,730,476 | 74.00 | 7,810,000 | 18.00 | 3,496,031 | 8.00 | 43,036,507 |
| 2001-02 | 34,335,261 | 72.40 | 8,495,000 | 17.90 | 4,618,009 | 9.70 | 47,448,270 |
| 2002-03 | 36,584,315 | 70.00 | 8,495,000 | 16.20 | 7,202,299 | 13.80 | 52,281,614 |
| 2003-04 | 38,084,456 | 69.80 | 8,600,000 | 15.70 | 7,901,522 | 14.50 | 54,585,978 |
| 2004-05 | 42,002,267 | 65.80 | 11,089,000 | 17.40 | 10,705,172 | 16.80 | 63,796,439 |
| 2005-06 | 44,609,424 | 67.80 | 11,613,000 | 17.60 | 9,605,612 | 14.60 | 65,828,036 |
| 2006-07 | 48,676,035 | 67.52 | 14,093,000 | 19.55 | 9,319,572 | 12.93 | 72,088,607 |
| 2007-08 | 52,196,010 | 66.56 | 16,738,165 | 21.34 | 9,488,162 | 12.10 | 78,422,337 |

OFFICE OF RESEARCH (DOES NOT INCLUDE CAPITAL AND CONSTRUCTION BUDGETS)
FEBRUARY 2008
SOURCE: WAKE TECHNICAL COMMUNITY COLLEGE CONTROLLER'S OFFICE CURRENT
OPERATING BUDGET



Service Area
Wake County

DEMOGRAPHIC INDICATORS FOR WAKE COUNTY

| | |
|-------------------------------------------------|---------|
| LAND AREA IN SQUARE MILES | 831.924 |
| Density (Persons per square mile - 2006) | 949.6 |

PERSONS (July 2006)

| | | |
|---------------------------------|---------|-------|
| Total County Population | 790,007 | |
| Total Incorporated Population | 613,290 | 77.6% |
| Total Unincorporated Population | 176,717 | 22.4% |
| 18 and Over | 585,311 | |

MUNICIPAL POPULATION, 2000-2006

| Municipality | 2000 Census | July 2006 |
|---------------------|------------------------|------------------|
| APEX | 20,212 | 28,830 |
| CARY | 94,536 | 122,075 |
| FUQUAY VARINA | 7,898 | 12,913 |
| GARNER | 17,757 | 23,507 |
| HOLLY SPRINGS | 9,192 | 17,165 |
| KNIGHTDALE | 5,958 | 8,671 |
| MORRISVILLE | 5,208 | 13,501 |
| RALEIGH | 276,093 | 352,259 |
| ROLESVILLE | 907 | 1,792 |
| WAKE FOREST | 12,588 | 22,371 |
| WENDELL | 4,247 | 5,421 |
| ZEBULON | 4,046 | 4,781 |

OFFICE OF RESEARCH/SOURCE: N.C. OFFICE OF STATE BUDGET, AND
MANAGEMENT/September 2007
www.osbm.state.nc.us



Students

**Wake Technical Community College
Annual Curriculum Enrollment**

| Academic Year | Curriculum Enrollment | Annual Percent Change |
|----------------------|------------------------------|------------------------------|
| 1978-79 | 2,427 | |
| 1979-80 | 2,377 | - 2.0% |
| 1980-81 | 2,962 | + 24.6 % |
| 1981-82 | 3,853 | + 30.0% |
| 1982-83 | 5,000 | + 29.7% |
| 1983-84 | 5,961 | + 19.2% |
| 1984-85 | 8,066 | + 35.3% |
| 1985-86 | 9,589 | + 18.8% |
| 1986-87 | 9,675 | + 0.8% |
| 1987-88 | 10,190 | + 5.3% |
| 1988-89 | 10,689 | + 4.8% |
| 1989-90 | 10,852 | + 1.5% |
| 1990-91 | 10,983 | + 1.2% |
| 1991-92 | 11,805 | - 1.6% |
| 1992-93 | 11,759 | - 0.3% |
| 1993-94 | 11,796 | + 0.3% |
| 1994-95 | 12,228 | + 3.6% |
| 1995-96 | 11,988 | - 1.9% |
| 1996-97 | 11,622 | - 3.0% |
| 1997-98 | 10,905 | - 6.1% |
| 1998-99 | 12,083 | + 10.8% |
| 1999-00 | 13,343 | + 10.4% |
| 2000-01 | 14,214 | + 6.5% |
| 2001-02 | 14,942 | + 5.1% |
| 2002-03 | 15,238 | + 1.9% |
| 2003-04 | 16,414 | + 7.7% |
| 2004-05 | 17,015 | + 3.6% |
| 2005-06 | 17,465 | + 2.6% |
| 2006-07 | 16,905 | - 3.2% |

Source: Wake Technical Community College Fact Book (1994, 1999, 2008)

| Program Name And Curriculum Code | | 2002 - 2003 | 2003 - 2004 | 2004 - 2005 | 2005 - 2006 | 2006 - 2007 | Average Annual Enrolment (2002-2007) |
|----------------------------------------|--------|-------------------|-------------------|-------------------|-------------------|-------------------|-----------------------------------------------|
| Associate in Arts | A10100 | 3459 | 4074 | 4473 | 4836 | 4731 | 4315 |
| Associate in General Education | A10300 | 470 | 523 | 617 | 726 | 710 | 609 |
| Associate in Science | A10400 | 1942 | 1966 | 1945 | 1940 | 1639 | 1886 |
| Engineering (Pre-Major) | A1040D | | | | 103 | 230 | 167 |
| Environmental Science Tech. | A20140 | 29 | 28 | 19 | 21 | 25 | 24 |
| Industrial Pharmaceutical Tech. | A20180 | 74 | 82 | 78 | 78 | 85 | 79 |
| Accounting | A25100 | 291 | 323 | 319 | 315 | 306 | 311 |
| Business Administration | A25120 | 459 | 461 | 444 | 446 | 407 | 443 |
| Human Resources Management | A2512C | 189 | 211 | 209 | 188 | 159 | 191 |
| Electronic Commerce | A2512I | 19 | 39 | 40 | 36 | 20 | 31 |
| Computer Programming | A25130 | 271 | 210 | 165 | 166 | 149 | 192 |
| Court Reporting & Captioning | A25140 | | | | 1 | 1 | 1 |
| Database Management | A25150 | | | | | 26 | 26 |
| High Performance Computing | A25230 | 20 | 16 | 14 | 18 | 15 | 17 |
| Hotel & Restaurant Management | A25240 | 68 | 68 | 74 | 80 | 83 | 75 |
| Information Systems | A25260 | 335 | 267 | 217 | 195 | 155 | 234 |
| Helpdesk & Support | A2526B | 53 | 3 | 2 | | | 12 |
| Programming | A2526E | 7 | 3 | | | | 5 |
| Information Systems Security | A25270 | | | | | 10 | 10 |
| Internet Technologies | A25290 | 188 | 166 | 134 | 123 | 112 | 145 |
| Medical Office Administration | A25310 | 130 | 171 | 164 | 187 | 179 | 166 |
| Networking Technology | A25340 | 407 | 311 | 236 | 201 | 181 | 267 |
| Office Systems Technology | A25360 | 74 | 76 | 77 | 71 | 67 | 73 |
| Office Systems Tech. - Legal | A2536A | 26 | 27 | 26 | 15 | 16 | 22 |

| Program Name And Curriculum Code | | 2002 - 2003 | 2003 - 2004 | 2004 - 2005 | 2005 - 2006 | 2006 - 2007 | Average Annual Enrolment (2002-2007) |
|----------------------------------------|--------|-------------------|-------------------|-------------------|-------------------|-------------------|-----------------------------------------------|
| Office Systems Tech. - Medical | A2536B | 2 | 2 | 2 | 1 | | 2 |
| Real Estate Appraisal | A25420 | | | | | 1 | 1 |
| Support Technologies | A25430 | | 48 | 28 | 13 | 6 | 24 |
| Simulation & Game Development | A25450 | | | | | 91 | 91 |
| Advertising & Graphic Design | A30100 | 9 | 102 | 159 | 202 | 203 | 135 |
| Air Condit., Heat., & Refrig. Tech. | A35100 | | | 1 | 20 | 57 | 26 |
| Electric Lineman Technology | A32510 | 24 | 8 | 7 | | | 13 |
| Electrical/Electronics Technology | A35220 | 39 | 60 | 61 | 62 | 60 | 56 |
| Architectural Technology | A40100 | 125 | 117 | 134 | 129 | 122 | 125 |
| Automation/Robotics Technology | A40120 | 20 | 20 | 11 | 7 | 3 | 12 |
| Civil Engineering Technology | A40140 | 84 | 77 | 100 | 105 | 105 | 94 |
| Computer Engineering Tech. | A40160 | 111 | 92 | 80 | 62 | 60 | 81 |
| Electronics Engineering Tech. | A40200 | 109 | 74 | 68 | 76 | 80 | 81 |
| Instrumentation | A4020A | 9 | 11 | 15 | 6 | 3 | 9 |
| Industrial Engineering Technology | A40240 | 10 | 15 | 13 | 15 | 17 | 14 |
| Landscape Architecture Tech. | A40260 | 60 | 52 | 48 | 48 | 43 | 50 |
| Manufacturing Engineering Tech. | A40300 | 6 | 3 | 5 | 2 | 2 | 4 |
| Mechanical Engineering Tech. | A40320 | 51 | 46 | 52 | 56 | 64 | 54 |
| Scientific Graphics Technology | A40360 | 2 | | 1 | | | 2 |
| Surveying Technology | A40380 | 34 | 40 | 48 | 53 | 67 | 48 |
| Telecom. & Network Engrg. Tech. | A40400 | 65 | 52 | 44 | 28 | 14 | 41 |
| Associate Degree Nursing | A45120 | 808 | 967 | 900 | 931 | 346 | 790 |
| Dental Hygiene | A45260 | 95 | 180 | 201 | 193 | 46 | 143 |

| Program Name And Curriculum Code | | 2002 - 2003 | 2003 - 2004 | 2004 - 2005 | 2005 - 2006 | 2006 - 2007 | Average Annual Enrolment (2002-2007) |
|----------------------------------------|--------|-------------------|-------------------|-------------------|-------------------|-------------------|-----------------------------------------------|
| Emergency Medical Science | A45340 | 81 | 96 | 103 | 91 | 56 | 85 |
| Human Services Technology | A45380 | 134 | 156 | 160 | 157 | 124 | 146 |
| Developmental Disabilities | A4538A | 26 | 35 | 37 | 29 | 28 | 31 |
| Substance Abuse | A4538E | 93 | 109 | 107 | 94 | 74 | 95 |
| Medical Assisting | A45400 | | 4 | 11 | 16 | 12 | 11 |
| Medical Laboratory Technology | A45420 | 66 | 68 | 63 | 76 | 46 | 64 |
| Radiography | A45700 | 198 | 260 | 275 | 282 | 83 | 220 |
| Electronic Servicing Technology | A50120 | 19 | 17 | 11 | 8 | 4 | 12 |
| Industrial Maintenance Tech. | A50240 | 24 | 27 | 26 | 19 | 14 | 22 |
| Machining Technology | A50300 | 7 | 14 | 10 | 9 | 8 | 10 |
| Tool, Die, & Mold Making | A5030A | 8 | 7 | 9 | 10 | 12 | 9 |
| Plastics | A5032A | 4 | 5 | 10 | 10 | 6 | 7 |
| Mechanical Drafting Technology | A50340 | 27 | 22 | 13 | 17 | 25 | 21 |
| Criminal Justice Technology | A55180 | 288 | 288 | 290 | 254 | 246 | 273 |
| Culinary Technology | A55200 | 216 | 250 | 221 | 223 | 212 | 224 |
| Early Childhood Associate | A55220 | 320 | 333 | 379 | 427 | 480 | 388 |
| General Occupational Technology | A55280 | 612 | 646 | 743 | 578 | 1496 | 815 |
| Automotive Systems Technology | A60160 | 75 | 116 | 158 | 185 | 150 | 137 |
| Heavy Equip. & Transport Tech. | A60240 | | | | 2 | 11 | 7 |
| Construction Equipment Systems | A6024B | 36 | 51 | 56 | 54 | 39 | 47 |
| Business Administration | C25120 | 14 | 12 | 17 | 9 | 13 | 13 |
| Human Resources Management | C2512C | 43 | 32 | 33 | 23 | 20 | 30 |
| Computer Programming | C25130 | 110 | 142 | 132 | 58 | 44 | 97 |
| Database Management | C25150 | | | | | 11 | 11 |

| Program Name And Curriculum Code | | 2002 - 2003 | 2003 - 2004 | 2004 - 2005 | 2005 - 2006 | 2006 - 2007 | Average Annual Enrolment (2002-2007) |
|----------------------------------------|--------|-------------------|-------------------|-------------------|-------------------|-------------------|-----------------------------------------------|
| High Performance Computing | C25230 | 10 | 12 | 14 | 5 | 8 | 10 |
| Hotel & Restaurant Management | C25240 | | | | | 1 | 1 |
| Information Systems | C25260 | 153 | 104 | 69 | 46 | 37 | 82 |
| Programming | C2526E | 1 | | | | | 1 |
| Information Systems Security | C25270 | | | | | 3 | 3 |
| Internet Technologies | C25290 | | | | 20 | 25 | 23 |
| Medical Office Administration | C25310 | 3 | 25 | 38 | 52 | 48 | 33 |
| Networking Technology | C25340 | 113 | 91 | 65 | 45 | 48 | 72 |
| Office Systems Technology | C25360 | 19 | 19 | 11 | 17 | 13 | 16 |
| Office Systems Tech. - Legal | C2536A | | | | 1 | 2 | 2 |
| Real Estate | C25400 | 147 | 167 | 161 | 193 | 97 | 153 |
| Real Estate Appraisal | C25420 | 106 | 93 | 93 | 103 | 73 | 94 |
| Advertising & Graphic Design | C30100 | | | | 15 | 25 | 20 |
| Air Condit., Heat., Refrig. Tech. | C35100 | 53 | 52 | 56 | 67 | 45 | 55 |
| Construction Management Tech. | C35190 | | 12 | 18 | 22 | 22 | 15 |
| Electrical/Electronics Technology | C35220 | 24 | 20 | 29 | 16 | 21 | 22 |
| Plumbing | C35300 | 3 | 6 | 3 | 2 | 3 | 4 |
| Architectural Technology | C40100 | 28 | 27 | 24 | 22 | 23 | 25 |
| Automation/Robotics Technology | C40120 | 3 | 3 | 9 | 4 | 2 | 4 |
| Computer Engineering Tech. | C40160 | 19 | 16 | 7 | 11 | 2 | 11 |
| Electronics Engineering Tech. | C40200 | 2 | 9 | 6 | 7 | 5 | 6 |
| Industrial Engineering Technology | C40240 | 2 | | | 1 | 3 | 2 |
| Telecomm. & Network Engrg. | C40400 | 9 | 3 | 3 | 2 | | 4 |
| CT & MRI Technology | C45200 | 10 | 17 | 7 | | | 11 |

| Program Name And Curriculum Code | | 2002 - 2003 | 2003 - 2004 | 2004 - 2005 | 2005 - 2006 | 2006 - 2007 | Average Annual Enrolment (2002-2007) |
|----------------------------------------|---------------|-------------------|-------------------|-------------------|-------------------|-------------------|-----------------------------------------------|
| Substance Abuse | <i>C4538E</i> | 12 | 14 | 17 | 27 | 21 | 18 |
| Nursing Assistant | <i>C45480</i> | 126 | 61 | 22 | 2 | 2 | 43 |
| Phlebotomy | <i>C45600</i> | 27 | 27 | 21 | 23 | 16 | 23 |
| Industrial Maintenance Tech. | <i>C50240</i> | 5 | 6 | 1 | 3 | | 4 |
| Machining Technology | <i>C50300</i> | 13 | 14 | 17 | 11 | 9 | 13 |
| Plastics | <i>C5032A</i> | 7 | 10 | 13 | 4 | 5 | 8 |
| Mechanical Drafting Technology | <i>C50340</i> | 11 | 8 | 11 | 9 | 16 | 11 |
| Welding Technology | <i>C50420</i> | 33 | 34 | 39 | 33 | 29 | 34 |
| Basic Law Enforcement Training | <i>C55120</i> | 75 | 70 | 59 | 55 | 45 | 61 |
| Culinary Technology | <i>C55200</i> | 17 | 25 | 17 | 17 | 16 | 18 |
| Early Childhood Associate | <i>C55220</i> | 271 | 221 | 159 | 161 | 117 | 186 |
| Foodservice Technology | <i>C55250</i> | | | | | 14 | 14 |
| General Occupational Technology | <i>C55280</i> | 6 | 2 | | | | 4 |
| Construction Equipment Systems | <i>C6024B</i> | 7 | 16 | 15 | 16 | 14 | 14 |
| Computer Programming | <i>D25130</i> | | | | 19 | 15 | 17 |
| Information Systems | <i>D25260</i> | 21 | 20 | 24 | 22 | 25 | 22 |
| Office Systems Technology | <i>D25360</i> | 22 | 24 | 20 | 22 | 17 | 21 |
| Simulation & Game Development | <i>D25450</i> | | | | | 5 | 5 |
| Air Condit., Heat., & Refrig. Tech. | <i>D35100</i> | 72 | 80 | 73 | 62 | 29 | 63 |
| Electrical/Electronics Technology | <i>D35220</i> | 26 | 27 | 25 | 22 | 21 | 24 |
| Plumbing | <i>D35300</i> | 14 | 13 | 16 | 22 | 17 | 16 |
| CT & MRI Technology | <i>D45200</i> | 9 | 10 | 25 | 22 | 23 | 18 |
| Dental Assisting | <i>D45240</i> | 46 | 46 | 46 | 59 | 40 | 47 |
| Medical Assisting | <i>D45400</i> | 105 | 134 | 141 | 136 | 75 | 118 |

| Program Name And Curriculum Code | | 2002 - 2003 | 2003 - 2004 | 2004 - 2005 | 2005 - 2006 | 2006 - 2007 | Average Annual Enrolment (2002-2007) |
|----------------------------------------|---------------|-------------------|-------------------|-------------------|-------------------|-------------------|-----------------------------------------------|
| Surgical Technology | <i>D45740</i> | 64 | 79 | 81 | 84 | 33 | 68 |
| Therapeutic Massage | <i>D45750</i> | | | 38 | 54 | 21 | 38 |
| Electronic Servicing Technology | <i>D50120</i> | 10 | 4 | 4 | 1 | | 5 |
| Industrial Maintenance Tech. | <i>D50240</i> | 9 | 7 | 5 | 4 | 2 | 5 |
| Machining Technology | <i>D50300</i> | 2 | 2 | 7 | 3 | 4 | 4 |
| Plastics | <i>D5032A</i> | | 1 | | | 2 | 2 |
| Mechanical Drafting Technology | <i>D50340</i> | 8 | 7 | 1 | 3 | 1 | 4 |
| Welding Technology | <i>D50420</i> | 35 | 42 | 34 | 28 | 39 | 36 |
| Early Childhood Associate | <i>D55220</i> | 98 | 116 | 97 | 102 | 88 | 100 |
| Foodservice Technology | <i>D55250</i> | 17 | 12 | 2 | | | 10 |
| Automotive Systems Technology | <i>D60160</i> | 73 | 39 | 24 | 20 | 12 | 34 |
| Construction Equipment Systems | <i>D6024B</i> | 7 | 7 | 6 | 3 | 4 | 5 |
| Early College | <i>T90930</i> | | | | | 97 | 97 |
| Huskins Bill Students | <i>T90970</i> | 119 | 124 | 158 | 157 | 136 | 139 |
| Dual Enrolled Students | <i>T90980</i> | 70 | 90 | 121 | 127 | 111 | 104 |
| Special Credit Students | <i>T90990</i> | 1605 | 1793 | 2059 | 2088 | 2041 | 1917 |

Source: North Carolina Community College System Office – Data Warehouse

Notes:

* This report provides unduplicated headcount (as reported to the System Office) broken down and sorted by Curriculum Code.

** This report is accessible through the Data Warehouse Report Library made available on the Community College Planning & Research Organization's (CCPRO) website:

<http://ccpro.org/GeneralInfo/DWRL/DataWHRL.htm>

***Students may have multiple academic programs. The annual program enrollment counts reflect active multiple student enrollment.

****Enrollment in the Health Science majors fluctuates based on the number of students that are placed within the General Occupational Technology Curriculum.

WAKE TECHNICAL COMMUNITY COLLEGE

UNDUPLICATED HEADCOUNT
LAST 10 YEARS

| Year | Continuing Education | Curriculum | Total |
|-------------|---------------------------------|-------------------|--------------|
| 1997-1998* | 33,165 | 10,905 | 41,426 |
| 1998-1999 | 38,432 | 12,083 | 47,413 |
| 1999-2000 | 35,808 | 13,343 | 46,135 |
| 2000-2001 | 34,154 | 14,214 | 45,387 |
| 2001-2002 | 34,704 | 14,942 | 46,175 |
| 2002-2003 | 36,205 | 15,238 | 47,474 |
| 2003-2004 | 35,974 | 16,414 | 48,424 |
| 2004-2005 | 39,574 | 17,015 | 52,303 |
| 2005-2006 | 40,125 | 17,465 | 53,556 |
| 2006-2007 | 40,197 | 16,905 | 54,110 |

* 1997-1998 Semester system began

MARCH 2008

SOURCE: ANNUAL STATISTICAL REPORTS, 2007 FACT BOOK, SYSTEM ANNUAL REPORTS, NCCCS

WAKE TECHNICAL COMMUNITY COLLEGE

Unduplicated Student Enrollment by Age 2006 - 2007

| Curriculum | | |
|------------|------------|-------|
| Age | Enrollment | % |
| 16-Under | 2 | 0% |
| 17 | 56 | .3% |
| 18 | 233 | 1.3% |
| 19 | 1,282 | 7.2% |
| 20 | 1,779 | 10.0% |
| 21 | 1,672 | 9.4% |
| 22 | 1,297 | 7.3% |
| 23 | 1,095 | 6.1% |
| 24 | 928 | 5.2% |
| 25-29 | 3,194 | 18.0% |
| 30-34 | 2,039 | 11.4% |
| 35-39 | 1,525 | 8.5% |
| 40-44 | 1,065 | 6.0% |
| 45-49 | 801 | 4.5% |
| 50-54 | 440 | 2.4% |
| 55-59 | 213 | 1.2% |
| 60-64 | 80 | .4% |
| 65+ | 38 | .8% |
| TOTAL | 17,739 | 100% |

Data Warehouse Tables CC101M-II and NEXT 0301

WAKE TECHNICAL COMMUNITY COLLEGE

Average Annual Full Time Equivalent (FTE)

| Academic Year | FTE |
|---------------|--------|
| 1997-1998 | 6,848 |
| 1998-1999 | 7,745 |
| 1999-2000 | 8,292 |
| 2000-2001 | 8,550 |
| 2001-2002 | 9,150 |
| 2002-2003 | 9,757 |
| 2003-2004 | 10,047 |
| 2004-2005 | 10,377 |
| 2005-2006 | 10,809 |
| 2006-2007 | 11,166 |

Average Cost Per FTE Analysis Year Ending June 30, 2007

| | Wake Tech | System |
|------------------------------------|-----------|----------|
| Instruction-Curriculum* | 3,038.48 | 3,267.41 |
| Instruction Continuing Education** | 4,517.68 | 3,455.95 |
| Student Support | 435.04 | 389.95 |
| Operation & Maintenance Plant | 0 | 9.14 |
| Academic Support | 681.10 | 513.58 |
| Institutional Support | 327.82 | 847.26 |

*Average Based on Curriculum FTE only

** Average Based on Continuing Education FTE – Including Non-Budget FTE

All averages (except as noted) are based on annualized average FTE earned with the exception of self-supporting FTE

SOURCE: (Average Cost Per FTE Analysis) NCCCS FACT BOOK 2008
(Current Operating / 112 Report Expenditures: Year Ending June 30, 2007)

**Wake Technical Community College
Annual Full-Time Equivalent (FTE)**

| Academic Year | FTE | Annual Percent Change |
|----------------------|------------|------------------------------|
| 1978-79 | 1,873 | |
| 1979-80 | 2,243 | + 19.7% |
| 1980-81 | 2,797 | + 24.6% |
| 1981-82 | 3,208 | + 14.6% |
| 1982-83 | 3,575 | + 11.4% |
| 1983-84 | 3,677 | + 2.8% |
| 1984-85 | 4,192 | + 14.0% |
| 1985-86 | 4,418 | + 5.3% |
| 1986-87 | 4,185 | - 5.2% |
| 1987-88 | 4,428 | + 5.8% |
| 1988-89 | 4,626 | + 4.4% |
| 1989-90 | 5,541 | + 19.7% |
| 1990-91 | 5,347 | - 3.5% |
| 1991-92 | 5,639 | + 5.4% |
| 1992-93 | 5,884 | + 4.3% |
| 1993-94 | 5,732 | - 2.5% |
| 1994-95 | 5,809 | + 1.3% |
| 1995-96 | 5,908 | + 1.7% |
| 1996-97 | 5,668 | - 4.0% |
| 1997-98 | 6,848 | + 20.8% |
| 1998-99 | 7,745 | + 13.0% |
| 1999-00 | 8,292 | + 7.0% |
| 2000-01 | 8,550 | + 3.1% |
| 2001-02 | 9,150 | +7.0% |
| 2002-03 | 9,757 | + 6.6% |
| 2003-04 | 10,047 | + 2.9% |
| 2004-05 | 10,377 | + 3.2% |
| 2005-06 | 10,809 | + 4.1% |
| 2006-07 | 11,166 | + 3.3% |

Source: Wake Technical Community College Fact Book (1994, 1999, 2008)

CURRICULUM FTE LAST 5 YEARS

| Year | Fall | Spring | Summer |
|-------------|-------------|---------------|---------------|
| 2002-2003 | 3,750 | 3,661 | 1,202 |
| 2003-2004 | 3,885 | 3,753 | 1,161 |
| 2004-2005 | 3,990 | 3,841 | 1,179 |
| 2005-2006 | 4,194 | 4,004 | 1,203 |
| 2006-2007 | 4,187 | 4,066 | 1,244 |

WAKE TECHNICAL COMMUNITY COLLEGE NUMBER OF GRADUATES PER YEAR LAST 5 YEARS CUMULATIVE TOTAL

| YEAR | DEGREE | DIPLOMA | CERTIFICATE | TOTAL |
|-------------|---------------|----------------|--------------------|--------------|
| 2002-2003 | 820 | 142 | 395 | 1,357 |
| 2003-2004 | 837 | 107 | 352 | 1,296 |
| 2004-2005 | 1,011 | 114 | 414 | 1,539 |
| 2005-2006 | 1,020 | 135 | 353 | 1,508 |
| 2006-2007 | 960 | 111 | 368 | 1,439 |

OFFICE OF RESEARCH

JANUARY 2008

SOURCE: WAKE TECHNICAL COMMUNITY COLLEGE REGISTRAR

**STUDENT FINANCIAL AID
2006-2007**

| GRANTS, GIFT AWARDS SCHOLARSHIP | NUMBER OF STUDENTS | TOTAL DOLLARS | AVERAGE PER RECIPIENT |
|--------------------------------------------|-------------------------------|--------------------------|----------------------------------|
| | | | |
| FSEOG | 207 | 122,306 | 590.85 |
| PELL GRANT TOTAL | 2,150 | 4,110,604 | 1911.90 |
| | | | |
| EMPLOYMENT | | | |
| FWS | 56 | 113,240 | 2022.14 |
| VOCATIONAL REHABILITATION | 48 | 40,496 | 843.66 |
| VETERANS ADMINISTRATION | 118 | 85,264 | 722.5 |
| JOB TRAINING PARTNERSHIP WIA, NAFTA | 110 | 130,154 | 1183.22 |
| EXTERNAL SOURCES OF AID | | | |
| LOANS (STAFFORD) | | | |
| SUBSIDIZED | 1,101 | 2,628,596 | 2387.46 |
| UNSUBSIDIZED | 699 | 1,982,333 | 2835.95 |
| FPLUS | 17 | 98,833 | 5813.70 |
| NCNESLP | 38 | 42,677 | 1123.07 |
| NCHSM | 0 | 0 | 0 |
| NCSIG | 75 | 39,200 | 522.66 |
| NCCC GRANT | 475 | 379,508 | 798.96 |
| | | | |
| TOTAL | 5,204 | 9,773,211 | 1918.57 |

Abbreviations used in this report are:

FWS – College Work Study
 FPLUS - Federal Plus
 FSEOG – Federal Supplemental Education Opportunity Grant
 HPEAA – Health Professions Education Assistance Act
 HSM – Health, Science & Mathematics Student Loan Program
 JTPA – Job Training Partnership Act
 NCCC - North Carolina Community College
 NCLTG – North Carolina Legislative Tuition Grants
 NCSIG – North Carolina Student Incentive Grants
 NESLP – Nurse Education Scholarship Loan Program
 NSP – Nurse Scholars Program
 NTA – Nurse Training Act
 SCSF – State Contractual Scholarship Fund
 SOURCE: NCHED A-10

WAKE TECHNICAL COMMUNITY COLLEGE
ADULT HIGH SCHOOL GRADUATES LAST 5 YEARS

| YEAR | NUMBER GRADUATES |
|-------------|-------------------------|
| 2002-2003 | 49 |
| 2003-2004 | 60 |
| 2004-2005 | 56 |
| 2005-2006 | 47 |
| 2006-2007 | 51 |

GED GRADUATES LAST 5 YEARS

| YEAR | NUMBER GRADUATES |
|-------------|-------------------------|
| 2002-2003 | 505 |
| 2003-2004 | 608 |
| 2004-2005 | 704 |
| 2005-2006 | 594 |
| 2006-2007 | 647 |

OFFICE OF RESEARCH
JANUARY 2008
SOURCE: LEIS REPORT

2006 – 2007
Wake Technical Community College's
Student Population Compared with Wake County

| 2000 US Census Wake County | | |
|---------------------------------------|----------------|---------------|
| Male | 390,206 | 49.6% |
| Female | 396,316 | 50.4% |
| Total | 786,522 | 100.0% |

| Wake County – 2000 US Census | | |
|-------------------------------------|----------------|-------|
| American Indian | 2,398 | 0.5% |
| Asian | 35,134 | 4.4% |
| Hispanic | 62,674 | 7.9% |
| Black | 157,427 | 20.0% |
| White | 528,889 | 67.2% |
| Total | 786,522 | |

Curriculum and Continuing Education
Student Enrollment by Gender and Race

| 2006-2007 Wake Tech | | | | | |
|--------------------------------|---------------|----------------|-----------------------------|---------------|----------------|
| Curriculum | | Percent | Continuing Education | | Percent |
| Male | 7,388 | 43.7% | Male | 20,568 | 51.1% |
| Female | 9,517 | 56.3% | Female | 19,629 | 48.9% |
| Total | 17,465 | 100% | | 40,125 | 100% |

| 2006-2007 Wake Tech | | | | |
|--------------------------------|-------------------|--------|-----------------------------|--------|
| | Curriculum | | Continuing Education | |
| White | 9,288 | 54.9% | 20,435 | 50.8% |
| Black | 3,701 | 21.8% | 10,638 | 26.4% |
| Asian | 842 | 4.9% | 1,570 | 3.9% |
| Hispanic | 771 | 4.5% | 4,696 | 11.6% |
| American Indian | 85 | 0.8% | 255 | 0.9% |
| Other | 2,218 | 13.1% | 2,603 | 6.4% |
| | 16,905 | 100.0% | 40,197 | 100.0% |

WAKE TECHNICAL COMMUNITY COLLEGE
PASSING RATES FOR LICENSURE EXAMS
2006-2007

| CURRICULUM | NUMBER TESTED | PERCENT PASSED |
|-------------------------------------------------------------------|----------------------|-----------------------|
| BLET | 53 | 87% |
| Dental Assisting | 22 | 100% |
| Dental Hygiene | | |
| National Board Dental Hygiene Examination | 20 | 100% |
| CITA Regional Examination – Clinical | 20 | 100% |
| Emergency Medical Technician (EMT) | | |
| NC Office of EMS - EMT | 127 | 94% |
| NC Office of EMS – EMT (Intermediate) | 14 | 79% |
| NC Office of EMS – EMT - Paramedic | 16 | 100% |
| Medical Assisting (AAMA Certification) | 19 | 79% |
| Medical Laboratory Technology | | |
| American Society for Clinical Pathology (MLT) | 6 | 100% |
| National Credentialing Agency for Laboratory Science (CLT) | 6 | 100% |
| Phlebotomy | | |
| American Society for Clinical Pathology (PBT) | 10 | 100% |
| Nursing (Associate) | | |
| 2005 (NCLEX) | 101 | 91% |
| 2006 (NCLEX) | 131 | 84% |
| Nursing Assisting | 146 | 92% |
| Radiography | 32 | 100% |
| Real Estate | *33 | *52% |
| Therapeutic Massage | | |
| National Certification Board for Therapeutic Massage and Bodywork | 9 | 100% |

*Real Estate licensure exam scores are included in the new Performance Measure pertaining to "Passing Rates on Licensure/Certification Exams" (benchmark: college must have an 80% aggregate (average) institutional passing rate for first time test takers)

OFFICE OF RESEARCH
MARCH 2008
SOURCE: NCCCS Critical Success Factors 2008

GRADUATES BY CURRICULUM

ARTS AND SCIENCES

GRADUATES 2006-2007

| | | |
|--------|-----------------------------------------------------------------------------------------------------|-----|
| A10100 | Associate in Arts Degree (for transfer to university liberal arts programs) | 292 |
| A10400 | Associate in Science Degree (for transfer to university science and engineering programs) | 49 |
| A10300 | Associate in General Education Degree | 10 |
| A1040D | Associate in Science – Pre Major: Engineering | 4 |

APPLIED TECHNOLOGY

Associate in Applied Science Degree:

| | | |
|--------|---------------------------------------------------------------|----|
| A35100 | Air Conditioning Heating and Refrigeration Technology | 5 |
| A60160 | Automotive Systems Technology | 26 |
| A35220 | Electrical/Electronics Technology | 12 |
| A60240 | Heavy Equipment and Transport Technology | 11 |
| A6024B | Heavy Equipment & Transport Technology/Construction Equipment | 16 |
| A50240 | Industrial Maintenance Technology | 5 |
| A5030A | Machining Technology/Tool, Die and Mold Making | 3 |
| A5032A | Manufacturing Technology/Plastics | 2 |
| A50340 | Mechanical Drafting Technology | 2 |

Diploma:

| | | |
|---------|--------------------------------------------------------|---|
| D35100A | Air Conditioning, Heating and Refrigeration Technology | 4 |
| D60160A | Automotive Systems Technology | 3 |
| D35220A | Electrical/Electronics Technology | 1 |
| D35300 | Plumbing | 1 |
| D50300A | Machining Technology | 1 |
| D50420A | Welding Technology | 3 |

Certificate:

| | | |
|---------|------------------------------------------------------------------------------------------------------------------------|----|
| C35100B | Air Conditioning, Heating and Refrigeration Technology | 19 |
| C55120 | Basic Law Enforcement Training | 16 |
| C35190B | Construction Management Technology | 11 |
| C35220C | Electrical/Electronics Technology: Commercial wiring | 2 |
| C35220B | Electrical/Electronics Technology: Residential Wiring Methods | 3 |
| C6024BB | Heavy Equipment and Transport Technology/Construction Equipment Systems: Hydraulics, Engines, and Transmissions | 2 |
| C6024BC | Heavy Equipment and Transport Technology/Construction Equipment Systems: Fuel Injection, Electrical and Electronics | 1 |
| C50300B | Machining Technology | 3 |
| C50300C | Machining Technology: CNC Machining | 1 |
| C50340B | Mechanical Drafting Technology | 2 |
| C35300A | Plumbing Applications and Diagrams | 5 |
| C50420B | Welding Technology | 6 |

BUSINESS TECHNOLOGIES**Associate in Applied Science Degree:**

| | | |
|--------|----------------------------------------------------|----|
| A25100 | Accounting | 29 |
| A25120 | Business Administration | 26 |
| A25121 | Business Administration/Electronic Commerce | 2 |
| A2512C | Business Administration/Human Resources Management | 7 |
| A55180 | Criminal Justice Technology | 36 |
| A55200 | Culinary Technology | 17 |
| A55220 | Early Childhood Associate | 32 |
| A25240 | Hotel and Restaurant Management | 8 |
| A25310 | Medical Office Administration | 8 |
| A25360 | Office Systems Technology | 2 |
| A2536A | Office Systems Technology/Legal | 2 |

Diploma:

| | | |
|---------|---------------------------|----|
| D55220A | Early Childhood Associate | 15 |
|---------|---------------------------|----|

Certificate:

| | | |
|---------|-----------------------------------------------------------------|----|
| C25120A | Business Administration: Sales Development | 4 |
| C2512CA | Business Administration: Human Resources Management | 5 |
| C25120B | Business Administration: Customer Service | 1 |
| C55200A | Culinary Technology | 3 |
| C55200B | Culinary Technology: Baking | 2 |
| C55220B | Early Childhood Associate | 59 |
| C55220C | Early Childhood Associate: Infant/Toddler Care | 64 |
| C25240A | Hotel & Restaurant Management: Hotel Management | 2 |
| C25240B | Hotel & Restaurant Management: Restaurant Management | 1 |
| C25310B | Medical Office Administration: Medical Billing Coding | 2 |
| C25310A | Medical Office Administration: Medical Office Specialist | 14 |
| C25310C | Medical Office Administration: Medical Transcription Specialist | 3 |
| C2536AA | Office Systems Technology: Legal | 3 |
| C25360D | Office Systems Technology: Intergrated Office Systems | 2 |
| C25360E | Office Systems Technology: Office Publications Certificate | 2 |
| C25360C | Office Systems Technology: Office Specialist II | 1 |
| C25360B | Office Systems Technology: Word Processing | 8 |

COMPUTER & ENGINEERING TECHNOLOGIES (Engineering)**Associate in Applied Science Degree:**

| | | |
|--------|------------------------------------|----|
| A40100 | Architectural Technology | 12 |
| A40140 | Civil Engineering Technology | 11 |
| A40160 | Computer Engineering Technology | 3 |
| A40200 | Electronics Engineering Technology | 9 |
| A50120 | Electronic Servicing | 1 |
| A20140 | Environmental Science Technology | 6 |
| A40240 | Industrial Engineering Technology | 4 |

GRADUATES 2006-2007

| | | |
|---------------------|---------------------------------------------------------------|----|
| A20180 | Industrial Pharmaceutical Technology | 20 |
| A40260 | Landscape Architecture Technology | 7 |
| A40300 | Manufacturing Engineering | 1 |
| A40320 | Mechanical Engineering Technology | 6 |
| A40380 | Surveying Technology | 8 |
| A40400 | Telecommunications and Network Engineering Technology | 3 |
| Diploma: | | |
| D5032AB | Manufacturing Technology/Plastics | 1 |
| Certificate: | | |
| C40100A | Architectural Technology: Architectural CAD | 6 |
| C40140A | Civil Engineering Technology: Civil Design | 2 |
| C40160A | Computer Engineering Technology: UNIX System Mgmt. Program. | 3 |
| C25150A | Database Management: ORACLE Developer | 1 |
| C25150B | Database Management: ORACLE Programming | 1 |
| C40260A | Landscape Architecture Technology: Landscape | 1 |
| C5032AC | Manufacturing Technology/Plastics: Plastics Extrusion | 1 |
| C5032AF | Manufacturing Technology/Plastics: Plastics Injection Molding | 3 |
| C5032AH | Manufacturing Technology/Plastics: Plastics Materials | 1 |
| C40320B | Mechanical Engineering Technology: Mechanical Design | 1 |

COMPUTER & ENGINEERING TECHNOLOGIES – Computer Information Systems**Associate in Applied Science Degree:**

| | | |
|--------|--------------------------------|----|
| A25260 | Computer Information Systems | 20 |
| A25130 | Computer Programming | 4 |
| A25230 | High Performance Computing | 1 |
| A25290 | Web Technologies | 9 |
| A25340 | Networking Technology | 28 |
| A30100 | Advertising and Graphic Design | 25 |

Diploma:

| | | |
|--------|------------------------------|----|
| D25260 | Information Systems (Prison) | 11 |
|--------|------------------------------|----|

Certificate:

| | | |
|---------|-------------------------------------------------------------------|----|
| C30100A | Advertising and Graphic Design: Graphics and Design | 4 |
| C30100B | Advertising and Graphic Design: Web and Graphic Design | 8 |
| C25260A | Computer Information Technology: M.O.S. | 13 |
| C25260E | Computer Information Systems: Spreadsheet Management | 6 |
| C25260J | Computer Information Systems: Computer Forensics | 3 |
| C25260G | Computer Information Systems: Hardware Troubleshooting and Repair | 14 |
| C25130C | Computer Programming: C++ Programming | 1 |
| C25340C | Networking Technology: CISCO Certified Associate | 5 |
| C25340A | Networking Technology: MCSE | 3 |
| C25290B | Web Technologies: E-Commerce Programming | 3 |
| C25290C | Web Technologies: Web Designer | 10 |
| C25290A | Web Technologies: Web Developer | 5 |

GRADUATES 2006-2007

HEALTH SCIENCES

Associate in Applied Science Degree:

| | | |
|--------|------------------------------------------------------|----|
| A45340 | Emergency Medical Science | 14 |
| A45380 | Human Services Technology | 18 |
| A4538A | Human Services Technology/Developmental Disabilities | 2 |
| A4538E | Human Services Technology/Substance Abuse | 6 |
| A45400 | Medical Assisting | 4 |
| A45260 | Dental Hygiene | 20 |
| A45420 | Medical Laboratory Technology | 13 |
| A45120 | Nursing | 69 |
| A45700 | Radiography | 30 |

Diploma:

| | | |
|--------|---------------------------------------------------------------|----|
| D45200 | Computed Tomography and Magnetic Resonance Imaging Technology | 1 |
| D45240 | Dental Assisting | 22 |
| D45400 | Medical Assisting | 31 |
| D45740 | Surgical Technology | 6 |
| D45750 | Therapeutic Massage | 11 |

Certificate:

| | | |
|---------|-------------------------------------------|----|
| C45200B | CT/MRI Technology: MRI Technology | 5 |
| C45600 | Phlebotomy | 14 |
| C4538EA | Human Services Technology/Substance Abuse | 7 |

**NUMBER GRADUATES
2002 – 2007**

| | 2002-2003 | 2003-2004 | 2004-2005 | 2005-2006 | 2006-2007 |
|--------------------------------------------------|-----------|-----------|-----------|-----------|-----------|
| Associate in Arts | 232 | 238 | 311 | 314 | 292 |
| Associate in Science | 53 | 54 | 63 | 55 | 49 |
| Associate in General Education | 7 | 20 | 14 | 15 | 10 |
| Business Technology - Associate | | | | | |
| Accounting | 16 | 18 | 27 | 23 | 29 |
| Business Administration | 29 | 27 | 28 | 26 | 26 |
| Business Admin/Electronic Commerce | 0 | 1 | 3 | 5 | 2 |
| Business Administration/HR | 15 | 13 | 12 | 18 | 7 |
| Criminal Justice Technology | 25 | 24 | 41 | 25 | 36 |
| Culinary Technology | 9 | 13 | 25 | 11 | 17 |
| Early Childhood Associate | 41 | 20 | 27 | 31 | 32 |
| Hotel and Restaurant Management | 6 | 5 | 5 | 7 | 8 |
| Medical Office Administration | 5 | 3 | 8 | 19 | 8 |
| Office Systems Technology | 8 | 13 | 12 | 11 | 2 |
| Office Systems Technology: Legal | 2 | 2 | 3 | 3 | 2 |
| Business Technology – Diploma | | | | | |
| Early Childhood Associate | 39 | 10 | 20 | 20 | 15 |
| Office Systems Technology | 3 | 5 | 2 | 2 | 0 |
| Business Technology – Certificate | | | | | |
| Business Admin/Sales Development | 2 | 1 | 5 | 7 | 4 |
| Business Admin/Human Resources Management | 14 | 12 | 12 | 9 | 5 |
| Business Admin/Customer Service | 2 | 0 | 3 | 1 | 1 |
| Culinary Technology | 5 | 0 | 3 | 4 | 3 |
| Early Childhood Associate | 95 | 98 | 91 | 75 | 59 |
| Office Systems Technology: Medical | 1 | 6 | 15 | 19 | 14 |
| Office Systems Technology Word Processing | 6 | 8 | 8 | 8 | 8 |
| Office Systems Technology: Publication | 0 | 0 | 0 | 2 | 2 |
| Engineering Technology – Associate Degree | | | | | |
| Architectural Technology | 10 | 14 | 15 | 17 | 12 |
| Automation/Robotics Technology | 1 | 3 | 2 | 0 | 0 |
| Civil Engineering Technology | 10 | 4 | 13 | 7 | 11 |
| Computer Engineering Technology | 6 | 8 | 8 | 7 | 3 |
| Electronics Engineering Technology | 15 | 9 | 10 | 12 | 9 |
| Electronic Servicing | 0 | 0 | 0 | 5 | 1 |
| Environmental Science Technology | 8 | 5 | 4 | 2 | 6 |
| Industrial Engineering Technology | 4 | 3 | 1 | 1 | 4 |
| Industrial Pharmaceutical Technology | 12 | 24 | 19 | 12 | 20 |
| Landscape Architecture Technology | 4 | 3 | 6 | 7 | 7 |
| Manufacturing Engineering Technology | 1 | 2 | 0 | 1 | 1 |
| Manufacturing Technology/Plastics | 0 | 1 | 0 | 0 | 0 |
| Mechanical Engineering Technology | 5 | 8 | 7 | 9 | 6 |
| Surveying Technology | 6 | 1 | 4 | 7 | 8 |
| Telecommunications & Network Engineering | 12 | 6 | 6 | 2 | 3 |
| Engineering Technology - Diploma | | | | | |
| Manufacturing Technology/Plastics | | | | | |
| | | | | | |

**NUMBER GRADUATES
2002 – 2007**

| | 2002-2003 | 2003-2004 | 2004-2005 | 2005-2006 | 2006-2007 |
|--------------------------------------------------------|-----------|-----------|-----------|-----------|-----------|
| Engineering Technology - Certificate | | | | | |
| Architectural Tech: Arch CAD | 7 | 12 | 20 | 24 | 6 |
| Automation/Engineer Tech Industrial Control | 0 | 0 | 1 | 3 | 3 |
| Electronics Engineering Tech: Basic Electronics | 0 | 5 | 2 | 2 | 0 |
| Manufacturing Tech/Plastics Injection | 10 | 0 | 6 | 0 | 0 |
| Telecommunications & Network Eng: Tele Switch | 0 | 1 | 1 | 1 | 0 |
| Computer Information Systems – Associate Degree | | | | | |
| Computer Information Systems | 39 | 22 | 9 | 17 | 20 |
| Computer Programming | 19 | 11 | 16 | 5 | 4 |
| High Performance Computing | 0 | 1 | 2 | 2 | 1 |
| Web Technologies | 0 | 22 | 21 | 7 | 9 |
| Networking Technology | 72 | 48 | 30 | 35 | 28 |
| Adverting and Graphic Design | 0 | 0 | 7 | 20 | 25 |
| Support Technologies | 0 | 8 | 5 | 3 | 0 |
| Computer Information Systems – Diploma | | | | | |
| Information Systems (Prison) | 0 | 8 | 7 | 5 | 11 |
| Computer Information Systems - Certificate | | | | | |
| Advertising and Graphic Design: Graphics and Design | 0 | 0 | 0 | 6 | 4 |
| Advertising and Graphic Design: Web & Graphic Design | 0 | 0 | 0 | 6 | 8 |
| Computer Eng. Tech: Personal Computer | 3 | 4 | 1 | 3 | 3 |
| Computer Eng Tech: UNIX Systems | 9 | 0 | 2 | 3 | 0 |
| Computer Information Systems: M.O.S. | 10 | 13 | 8 | 9 | 13 |
| Computer Information Systems: Database Management | 6 | 4 | 2 | 0 | 0 |
| Computer Information Systems: Desktop Publishing | 0 | 6 | 6 | 7 | 0 |
| Computer Information Systems: Hardware/Troubleshoot | 11 | 8 | 9 | 6 | 14 |
| Computer Information Systems: Networking | 8 | 7 | 2 | 0 | 0 |
| Computer Information Systems: Internet | 6 | 6 | 0 | 0 | 0 |
| Computer Information Systems: Spreadsheet Mangt. | 7 | 14 | 1 | 3 | 6 |
| Computer Information Tech: IT Support | 0 | 0 | 0 | 1 | 1 |
| Computer Information Tech: Web Service | 0 | 0 | 0 | 1 | 0 |
| Computer Programming: C++ | 2 | 2 | 1 | 1 | 1 |
| Computer Programming: Oracle Programming | 17 | 15 | 9 | 5 | 0 |
| Computer Programming: Oracle Develop. | 0 | 0 | 12 | 6 | 0 |
| Computer Programming: JAVA | 0 | 6 | 12 | 3 | 0 |
| Computer Programming: Visual Basic | 6 | 4 | 6 | 4 | 0 |
| High Performance Computing: Linux | 0 | 0 | 0 | 1 | 0 |
| Networking Technology CISCO Certificate | 0 | 0 | 5 | 8 | 5 |
| Networking Technology CISCO (CCNP) | 0 | 0 | 3 | 0 | 0 |
| Networking Technology MCSE | 0 | 0 | 5 | 2 | 3 |
| Networking Technology Linux | 0 | 0 | 0 | 1 | 0 |
| Networking Technology: Security | 0 | 0 | 0 | 6 | 0 |
| Web Technologies: E-Commerce | 0 | 0 | 0 | 1 | 3 |
| Web Technologies: Web Designer | 0 | 0 | 0 | 8 | 10 |
| Web Technologies: Web Developer | 0 | 0 | 0 | 2 | 5 |

**NUMBER GRADUATES
2002 – 2007**

| | 2002-2003 | 2003-2004 | 2004-2005 | 2005-2006 | 2006-2007 |
|--------------------------------------------------------|-----------|-----------|-----------|-----------|-----------|
| Health Sciences – Associate Degree | | | | | |
| Dental Hygiene | 0 | 15 | 15 | 18 | 20 |
| Emergency Medical Science | 15 | 14 | 18 | 13 | 14 |
| Human Services Technology | 10 | 24 | 6 | 17 | 18 |
| Human Services Technology/Developmental | 0 | 1 | 0 | 1 | 2 |
| Human Services Tech/Substance Abuse | 1 | 5 | 2 | 2 | 6 |
| Medical Assisting | 0 | 0 | 0 | 7 | 4 |
| Medical Laboratory Technology | 6 | 5 | 12 | 8 | 13 |
| Nursing | 59 | 33 | 102 | 130 | 69 |
| Radiography | 16 | 15 | 24 | 18 | 30 |
| Health Sciences – Diploma | | | | | |
| Computed Tomography & Magnetic Resonance Imaging | 0 | 1 | 1 | 0 | 1 |
| Dental Assisting | 14 | 12 | 11 | 14 | 22 |
| Medical Assisting | 12 | 26 | 26 | 27 | 31 |
| Surgical Technology | 0 | 7 | 7 | 12 | 6 |
| Therapeutic Massage | 0 | 0 | 9 | 13 | 11 |
| Health Sciences – Certificate | | | | | |
| Computed Tomography Technology | 0 | 3 | 0 | 0 | 0 |
| Magnetic Resonance Image Technology | 3 | 3 | 0 | 0 | 5 |
| Nursing Assistant | 2 | 0 | 0 | 0 | 0 |
| Phlebotomy | 12 | 13 | 14 | 15 | 14 |
| Human Services Tech: Substance Abuse | 3 | 2 | 3 | 9 | 7 |
| Applied Technology – Associate Degree | | | | | |
| Air Conditioning, Heating and Refrigeration Technology | | | | | 5 |
| Automotive Systems Technology | 0 | 9 | 19 | 14 | 26 |
| Electrical/Electronics Technology | 2 | 6 | 8 | 10 | 12 |
| Electronic Servicing Technology | 4 | 5 | 0 | 0 | 0 |
| Heavy Equipment and Transport Tech. | 0 | 0 | 0 | 7 | 11 |
| HETT/Construction Equipment Systems | 6 | 14 | 12 | 15 | 16 |
| Industrial Maintenance Technology | 1 | 2 | 4 | 8 | 5 |
| Machining Technology | 0 | 0 | 0 | 1 | 0 |
| Machining Technology/Tool, Die, Mold | 1 | 4 | 8 | 4 | 3 |
| Mechanical Drafting Technology | 8 | 4 | 4 | 2 | 2 |
| Applied Technology – Diploma | | | | | |
| Air Conditioning, Heating and Refrigeration | 13 | 12 | 13 | 13 | 4 |
| Automotive Systems | 20 | 8 | 6 | 7 | 3 |
| Electrical/Electronics Technology | 7 | 4 | 4 | 0 | 12 |
| Electronic Servicing Technology | 0 | 0 | 0 | 1 | 0 |
| Heavy Equipment and Transport Technology | | | | | 16 |
| HETT/Construction Equipment Systems | 2 | 1 | 0 | 0 | 0 |
| Industrial Systems Technology | 2 | 1 | 1 | 1 | 0 |
| Machining Technology | 0 | 1 | 0 | 0 | 0 |
| Mechanical Drafting Technology | 0 | 1 | 0 | 1 | 1 |
| Plumbing | 2 | 4 | 4 | 10 | 1 |
| Welding Technology | 7 | 3 | 3 | 8 | 3 |

**NUMBER GRADUATES
2002 – 2007**

| | 2002-2003 | 2003-2004 | 2004-2005 | 2005-2006 | 2006-2007 |
|-------------------------------------------------------|-----------|-----------|-----------|-----------|-----------|
| Applied Technology – Certificate | | | | | |
| Basic Law Enforcement Training | 38 | 24 | 70 | 45 | 16 |
| Construction Management Tech | 0 | 0 | 12 | 11 | 11 |
| Electrical/Electronics Technology: Commercial Wiring | 7 | 3 | 6 | 0 | 2 |
| Electrical /Electronic Technology: Residential Wiring | 8 | 6 | 12 | 4 | 3 |
| Heavy Equipment and Transport Technology/Hydraulics | 10 | 15 | 18 | 10 | 2 |
| HVAC: Construction Equipment | 1 | 0 | 3 | 0 | 0 |
| HVAC: Construction Equipment, Fuel Injection | 1 | 0 | 1 | 1 | 1 |
| Machining Technology | 0 | 2 | 1 | 1 | 3 |
| Machining Technology: Tool, Die and Mold Making | 0 | 0 | 1 | 0 | 0 |
| Machining Technology: CNC Machining | 0 | 0 | 2 | 0 | 0 |
| Mechanical Drafting Technology | 3 | 5 | 3 | 3 | 2 |
| Plumbing: Modern Plumbing Codes and Blueprint | 1 | 0 | 0 | 10 | 0 |
| Plumbing: Plumbing Applications and Diagrams | 3 | 0 | 0 | 1 | 5 |
| Welding | | | | | 6 |

Number of Graduates by Division per Year - Wake Technical Community College

| | Business Technologies | | Applied Technologies | | Health Sciences | | Computer & Engineering Technologies | | University Transfer | |
|----------------|-----------------------|-----------------------|----------------------|-----------------------|---------------------|-----------------------|-------------------------------------|-----------------------|---------------------|-----------------------|
| | Number of Graduates | Annual Percent Change | Number of Graduates | Annual Percent Change | Number of Graduates | Annual Percent Change | Number of Graduates | Annual Percent Change | Number of Graduates | Annual Percent Change |
| 1978-79 | 87 | | 99 | | 102 | | 36 | | | |
| 1979-80 | 88 | + 1.1% | 142 | + 43.4% | 68 | - 33.3% | 56 | + 55.5% | | |
| 1980-81 | 114 | + 29.5% | 152 | + 7.0% | 125 | +83.8% | 67 | + 19.6% | | |
| 1981-82 | 107 | - 6.1% | 151 | -0.6% | 104 | - 16.8% | 68 | + 1.5% | | |
| 1982-83 | 140 | + 30.8% | 199 | + 31.7% | 130 | +25.0% | 117 | + 72.1 % | | |
| 1983-84 | 152 | + 8.5% | 164 | - 17.5% | 113 | - 13.1% | 146 | + 24.8% | | |
| 1984-85 | 170 | + 11.8% | 141 | - 14.0% | 91 | -19.4% | 200 | + 36.9% | | |
| 1985-86 | 188 | + 10.5% | 147 | + 4.2% | 83 | - 8.7 % | 132 | - 34.0% | | |
| 1986-87 | 179 | - 4.7% | 133 | - 9.5% | 67 | - 19.2 % | 144 | + 8.3% | | |
| 1987-88 | 176 | - 0.5% | 126 | - 5.2% | 58 | - 13.4% | 127 | - 11.8% | | |
| 1988-89 | 127 | - 27.8 % | 123 | - 2.3% | 89 | + 53.4% | 115 | - 9.4% | | |
| 1989-90 | 178 | + 40.1% | 134 | + 8.9% | 122 | + 37.1% | 110 | - 4.3% | | |
| 1990-91 | 199 | + 11.7% | 97 | -27.6% | 113 | -7.3% | 134 | + 21.8% | | |
| 1991-92 | 198 | - 0.5% | 110 | + 13.4% | 148 | + 30.9% | 116 | - 13.4% | | |
| 1992-93 | 164 | - 17.1% | 96 | - 12.7% | 139 | -6.1% | 186 | + 60.3% | 18 | |
| 1993-94 | 164 | 0% | 86 | - 10.4% | 142 | +2.1% | 190 | + 2.2% | 56 | + 211.0% |
| 1994-95 | 160 | -2.4 % | 82 | - 4.6% | 173 | + 21.8 % | 171 | - 10.0% | 55 | - 1.7% |
| 1995-96 | 161 | + 0.6% | 81 | - 1.2% | 132 | - 23.6 % | 182 | + 6.4% | 82 | + 49.1% |
| 1996-97 | 188 | + 16.7% | 91 | + 12.3% | 129 | - 2.2% | 203 | + 11.5% | 88 | + 7.3% |
| 1997-98 | 145 | - 29.6% | 63 | - 30.7% | 133 | + 3.1% | 153 | - 24.6% | 74 | - 15.9% |
| 1998-99 | 153 | + 5.5% | 68 | + 7.9% | 110 | - 17.3% | 165 | + 7.8% | 109 | + 47.3% |
| 1999-00 | 132 | - 13.7% | 63 | -7.3% | 116 | + 5.5% | 190 | + 15.2% | 145 | +33.0% |
| 2000-01 | 120 | -9.1% | 66 | +4.7% | 108 | -6.9% | 196 | + 3.2% | 200 | + 37.9% |
| 2001-02 | 139 | + 13.6% | 59 | - 10.6% | 133 | + 23.1% | 240 | + 22.4% | 245 | + 22.5% |
| 2002-03 | 200 | + 43.8% | 73 | + 23.7% | 143 | + 7.5% | 252 | + 5.0% | 292 | + 19.2% |
| 2003-04 | 157 | - 21.5% | 80 | + 9.5% | 158 | + 10.5% | 227 | - 9.9% | 322 | + 10.3% |
| 2004-05 | 205 | + 30.5% | 81 | + 1.2% | 231 | + 46.2% | 189 | -16.7% | 372 | + 15.5% |
| 2005-06 | 200 | - 2.4% | 107 | + 32.1% | 280 | + 21.2% | 182 | -3.7% | 379 | + 1.9% |
| 2006-07 | 190 | -5.0% | 91 | -14.9% | 249 | - 11.1% | 192 | + 5.5% | 363 | - 4.2% |

- Wake Technical Community College Graduation Programs 1979-95; 1997; 1998 housed in the Bruce I. Howell Library (saved by James A. Cox).
- Wake Technical Community College Graduation Official Numbers and Attendance Reports 1996; 2000; 2002; 2004; 2006; and 2007 produced by Tyra B. Thompson.

2007 Average Starting Salaries

A.A.S. Degree

| | Average | Starting Range | # Returns |
|------------------------------------------------|---------|----------------|-----------|
| Business Education Division | | | |
| Accounting | 33,000 | 15,001-47,000 | 5 |
| Business Administration | 34,000 | 31,001-37,000 | 2 |
| Culinary Technology | 24,000 | 23,001-25,000 | 1 |
| Criminal Justice | 33,600 | 15,001-39,000 | 5 |
| Early Childhood Associate | 24,466 | 15,001- 47,000 | 15 |
| Hotel/Restaurant Mgmt | 18,000 | 17,001–19,000 | 1 |
| Medical Office Administration | 25,000 | 17,001-29,000 | 4 |
| | | | |
| Computer Information Systems | | | |
| Advertising and Graphic Design | 36,800 | 31,001-41,000 | 5 |
| Computer Information Systems | 45,250 | 41,001-47,000 | 4 |
| Computer Programming | 39,500 | 31,001-47,000 | 2 |
| Networking Technology | 39,500 | 29,001-47,000 | 4 |
| Web Technology | 47,000 | 47,000 | 1 |
| | | | |
| Engineering Technology | | | |
| Architectural Technology | 31,500 | 27,001-37,000 | 4 |
| Civil Engineering Technology | 33,000 | 31,001-35,000 | 2 |
| Electronics Engineering Technology | 38,000 | 37,001-39,000 | 1 |
| Industrial Pharmaceutical Technology | 37,000 | 29,001-45,000 | 2 |
| | | | |
| Health Sciences | | | |
| Associate Degree Nursing | 40,333 | 21,001-47,000 | 39 |
| Medical Laboratory Technology | 34,000 | 33,001-35,000 | 1 |
| Emergency Medical Science | 32,000 | 29,001-39,000 | 8 |
| Human Services Technology/Dev. Disab. | 40,500 | 33,001-47,000 | 2 |
| Radiography | 40,000 | 35,001-45,000 | 6 |
| | | | |
| Applied Technology | | | |
| Automotive Systems Technology | 26,538 | 17,001-47,000 | 13 |
| Electrical/Electronics Technology | 25,250 | 19,001-33,000 | 8 |
| Heavy Equipment and Transport Technology | 34,714 | 19,001-47,000 | 7 |
| Heavy Equip/Transp Const. Equip | 29,800 | 15,001-47,000 | 5 |
| Air Cond, Heating and Refrigeration Technology | 40,000 | 39,001-41,000 | 1 |

2007 Average Starting Salaries for Diplomas

| | Average | Starting Range | # Returns |
|------------------------------------------------|----------------|-----------------------|------------------|
| Business Education Division | | | |
| Early Childhood Associate | 18,000 | 15,001-21,000 | 2 |
| | | | |
| Health Sciences | | | |
| Dental Assisting | 34,400 | 29,001-43,000 | 5 |
| Medical Assisting | 23,333 | 19,001-27,000 | 3 |
| Therapeutic Massage | 22,000 | 21,001-23,000 | 1 |
| Surgical Technology | 30,000 | 27,001-33,000 | 3 |
| | | | |
| Applied Technologies | | | |
| Welding | 27,000 | 25,001-29,000 | 2 |
| Air Cond, Heating and Refrigeration Technology | 34,000 | 33,001-35,000 | 1 |

2007 Average Starting Salaries for Certificates

| | Average | Starting Range | # Returns |
|----------------------------------------------------|----------------|-----------------------|------------------|
| Business Education Division | | | |
| Early Childhood Associate: Infant Toddler | 24,333 | 15,001-39,000 | 6 |
| Early Childhood Associate Certificate | 28,500 | 17,001-47,001 | 6 |
| Business Administration/ Customer Service | 36,000 | 35,001-37,000 | 1 |
| Business Administration/Human Resources Management | | | 2 |
| Office Systems Technology: Integ Office | 32,000 | 31,001-33,000 | 1 |
| Office Systems Technology: Publications | 32,000 | 31,001-33,000 | 1 |
| Medical Office Admin: Med Off Spec | 28,000 | 17,001-39,000 | 4 |
| | | | |
| Computer Technologies Division | | | |
| Computer Inform Tech:Micro Sp MOS | 38,000 | 37,001-39,000 | 1 |
| Web Technologies:Web Designer | 28,000 | 25,001-31,000 | 2 |
| | | | |
| Health Sciences | | | |
| Human Services Tech/Subs Abuse | 26,000 | 25,001-27,000 | 1 |
| | | | |
| Applied Technologies | | | |
| Electrical Residential Wiring | 28,000 | 23,001-33,000 | 5 |
| Electrical Commercial Wiring | 30,000 | 23,001-37,000 | 5 |
| HVAC | 37,571 | 27,001-47,001 | 7 |

PERCENT OF 2005-06
COLLEGE TRANSFER STUDENTS WITH A
GPA OF > = 2.0 AFTER TWO SEMESTERS AT A UNC INSTITUTION

| INSTITUTION | TOTAL FTE | 24 or More Semester Hours | | Associate Degree Recipient | | Total | |
|--------------------------|----------------|---------------------------|---------------|----------------------------|---------------|--------------|---------------|
| | | Number | Percent >=2.0 | Number | Percent >=2.0 | Number | Percent >=2.0 |
| Alamance CC | 3,896 | 64 | 87.5% | 24 | 100.0% | 88 | 90.9% |
| Asheville-Buncombe TCC | 5,780 | 49 | 95.9% | 57 | 93.0% | 106 | 94.3% |
| Beaufort County CC | 1,709 | 17 | 76.5% | ** | ** | 25 | 80.0% |
| Bladen CC | 1,406 | 23 | 82.6% | ** | ** | 30 | 86.7% |
| Blue Ridge CC | 2,183 | 22 | 100.0% | 12 | 100.0% | 34 | 100.0% |
| Brunswick CC | 1,457 | 13 | 92.3% | 16 | 81.3% | 29 | 86.2% |
| Caldwell CC & TI | 3,947 | 88 | 78.4% | 39 | 87.2% | 127 | 81.1% |
| Cape Fear CC | 6,758 | 224 | 83.9% | 177 | 83.6% | 401 | 83.8% |
| Carteret CC | 1,718 | 24 | 79.2% | ** | ** | 33 | 84.9% |
| Catawba Valley CC | 4,622 | 68 | 86.8% | 41 | 85.4% | 109 | 86.3% |
| Central Carolina CC | 5,159 | 34 | 82.4% | 25 | 88.0% | 59 | 84.8% |
| Central Piedmont CC | 13,250 | 261 | 76.3% | 179 | 87.2% | 440 | 80.7% |
| Cleveland CC | 2,973 | 26 | 76.9% | ** | ** | 32 | 81.2% |
| Coastal Carolina CC | 4,303 | 86 | 84.9% | 74 | 96.0% | 160 | 90.0% |
| College of The Albemarle | 2,239 | 27 | 81.5% | 21 | 95.2% | 48 | 87.5% |
| Craven CC | 2,707 | 38 | 73.7% | 29 | 79.3% | 67 | 76.1% |
| Davidson County CC* | 3,444 | 32 | 81.3% | 20 | 90.0% | 52 | 84.6% |
| Durham TCC | 4,588 | 56 | 87.5% | 33 | 97.0% | 89 | 91.0% |
| Edgecombe CC | 2,305 | ** | ** | ** | ** | 14 | 71.5% |
| Fayetteville TCC | 10,560 | 65 | 86.2% | 33 | 84.9% | 98 | 85.8% |
| Forsyth TCC | 6,514 | 100 | 76.0% | 26 | 88.5% | 126 | 78.6% |
| Gaston College* | 4,467 | 56 | 75.0% | 73 | 90.4% | 129 | 83.7% |
| Guilford TCC | 9,065 | 140 | 79.3% | 44 | 90.9% | 184 | 82.1% |
| Halifax CC | 1,538 | 11 | 72.7% | ** | ** | 15 | 66.6% |
| Haywood CC | 1,935 | ** | ** | 16 | 87.5% | 21 | 85.7% |
| Isothermal CC* | 2,177 | 28 | 85.7% | 18 | 100.0% | 46 | 91.3% |
| James Sprunt CC | 1,311 | ** | ** | 10 | 80.0% | 14 | 85.7% |
| Johnston CC | 3,813 | 38 | 73.7% | 23 | 87.0% | 61 | 78.7% |
| Lenoir CC | 3,173 | 23 | 69.6% | 25 | 76.0% | 48 | 72.9% |
| Martin CC | 925 | 13 | 53.8% | 6 | 75.0% | 19 | 60.5% |
| Mayland CC | 1,963 | 15 | 86.7% | ** | ** | 18 | 88.9% |
| McDowell TCC | 1,338 | ** | ** | ** | ** | 11 | 45.5% |
| Mitchell CC | 2,272 | 22 | 77.3% | 18 | 88.9% | 40 | 82.5% |
| Montgomery CC | 1,010 | ** | ** | ** | ** | ** | ** |
| Nash CC | 2,503 | 31 | 90.3% | 20 | 75.0% | 51 | 84.3% |
| Pamlico CC | 575 | ** | ** | ** | ** | ** | ** |
| Piedmont CC | 2,547 | 14 | 71.4% | ** | ** | 18 | 77.8% |
| Pitt CC | 5,656 | 89 | 78.7% | 45 | 82.2% | 134 | 79.9% |
| Randolph CC | 2,428 | 30 | 83.3% | 18 | 88.9% | 48 | 85.4% |
| Richmond CC | 2,040 | 14 | 71.4% | 6 | 66.7% | 20 | 70.0% |
| Roanoke-Chowan CC | 949 | 9 | 88.9% | 3 | 100.0% | 12 | 91.7% |
| Robeson CC | 3,671 | 16 | 62.5% | ** | ** | 24 | 70.8% |
| Rockingham CC* | 2,060 | 26 | 92.3% | 11 | 81.8% | 37 | 89.2% |
| Rowan-Cabarrus CC | 4,685 | 58 | 79.3% | 37 | 97.3% | 95 | 86.3% |
| Sampson CC | 1,761 | 12 | 83.3% | ** | ** | 18 | 88.9% |
| Sandhills CC* | 3,612 | 35 | 82.9% | 43 | 93.0% | 78 | 88.5% |
| South Piedmont | 2,156 | ** | ** | ** | ** | 11 | 81.8% |
| Southeastern CC | 2,381 | 31 | 71.0% | 34 | 76.5% | 65 | 73.9% |
| Southwestern CC | 2,216 | 19 | 84.2% | 36 | 97.2% | 55 | 92.7% |
| Stanly CC | 2,290 | 11 | 90.9% | ** | ** | 19 | 89.5% |
| Surry CC* | 2,960 | 89 | 85.4% | 52 | 96.2% | 141 | 89.4% |
| Tri-County CC | 1,076 | 11 | 81.8% | 12 | 100.0% | 23 | 91.3% |
| Vance-Granville CC | 4,213 | 30 | 96.7% | 14 | 78.6% | 44 | 90.9% |
| Wake TCC | 11,166 | 272 | 80.5% | 145 | 91.0% | 417 | 84.2% |
| Wayne CC | 3,479 | 49 | 75.5% | 21 | 81.0% | 70 | 77.2% |
| Western Piedmont CC* | 2,959 | 48 | 89.6% | 31 | 83.9% | 79 | 87.4% |
| Wilkes CC | 2,757 | 44 | 84.1% | 46 | 97.8% | 90 | 91.1% |
| Wilson CC | 2,112 | 11 | 90.9% | ** | ** | 16 | 87.5% |
| System Totals | 198,759 | 2,646 | 81.2% | 1,702 | 88.7% | 4,348 | 84.1% |

*Includes data from private colleges and universities.

**Number too small to report.

Italics means number of students in three years.



Continuing Education

WAKE TECHNICAL COMMUNITY COLLEGE

FULL-TIME EQUIVALENCY (FTE) DEFINITIONS

CURRICULUM FTE: Includes College Transfer, General Education, Technical, and Vocational Education.

EXTENSION FTE: Includes Academic, Adult High School, Avocational, Occupational, Practical Skills, ABE, Compensatory Education, Learning Lab (ILC), New and Expanding Industry, Human Resource Development, and Self-Supporting.

BASIC SKILLS (LITERACY) FTE - Includes Adult High School, ABE, and Compensatory Education

HUMAN RESOURCES DEVELOPMENT FTE - Includes Human Resources

SMALL BUSINESS CENTER FTE - Includes New and Expanding Industry, and Self-Supporting.

REGULAR BUDGET EXTENSION - Includes Adult High School, Occupational, Adult Basic Education, and Compensatory Education.

NON-REGULAR BUDGET EXTENSION - Includes Learning Laboratory, New and Expanding Industry, Human Resource Development, And Self-Supporting.

COMMUNITY SERVICE - Includes Academic, Avocational, Practical Skills, and Cultural and Civic Activities.

OCCUPATIONAL - Includes Occupational only. Occupational Extension Programs consist of single courses, complete in themselves, designed for the specific purposes of training an individual for employment, upgrading skills of persons presently employed, and retraining others for new employment in occupational fields.

SELF-SUPPORTING - Includes courses which the College may provide at the request of the community but for which the College receives no budgetary credit. The cost of such activities are borne exclusively by the participants or some contracting agency.

SPECIAL NOTE: Wake Tech and the North Carolina Community College System changed from the Quarter System to the Semester System beginning with Fall Semester 1997. The Summer of 1997 was a period of transition. Therefore, enrollment and FTE numbers for the Summer of 1997 were diminished.

When comparing annual enrollment and FTE figures for the Quarter System with the Semester System, you must remember to average the Quarter System numbers and sum the Semester System numbers.

Office of Research

PROGRESS OF BASIC SKILLS STUDENTS, 2006-2007

| INSTITUTION | SYSTEM FTE | TOTAL SERVED IN LITERACY | COMPLETED A LEVEL | PROGRESSING SAME LEVEL | MOVED TO A HIGHER LEVEL | EXIT NON-COMPLETER | COMPOSITE PROGRESS MEASURE |
|--------------------------|------------|--------------------------|-------------------|------------------------|-------------------------|--------------------|----------------------------|
| Alamance CC | 3,896 | 3,114 | 7% | 63% | 22% | 9% | 91% |
| Asheville-Buncombe TCC | 5,780 | 3,287 | 5% | 40% | 34% | 21% | 79% |
| Beaufort County CC | 1,709 | 1,256 | 2% | 47% | 26% | 25% | 75% |
| Bladen CC | 1,406 | 597 | 11% | 50% | 28% | 11% | 89% |
| Blue Ridge CC | 2,183 | 1,427 | 7% | 55% | 26% | 11% | 89% |
| Brunswick CC | 1,457 | 871 | 6% | 71% | 13% | 10% | 90% |
| Caldwell CC & TI | 3,947 | 2,474 | 5% | 53% | 27% | 15% | 85% |
| Cape Fear CC | 6,758 | 3,233 | 5% | 50% | 22% | 23% | 77% |
| Carteret CC | 1,718 | 904 | 10% | 48% | 18% | 24% | 76% |
| Catawba Valley CC | 4,622 | 3,076 | 8% | 57% | 24% | 11% | 89% |
| Central Carolina CC | 5,159 | 4,572 | 6% | 59% | 23% | 12% | 88% |
| Central Piedmont CC | 13,250 | 12,047 | 4% | 45% | 19% | 32% | 68% |
| Cleveland CC | 2,973 | 744 | 5% | 53% | 22% | 20% | 80% |
| Coastal Carolina CC | 4,303 | 3,649 | 4% | 48% | 36% | 12% | 88% |
| College of The Albemarle | 2,239 | 2,544 | 9% | 52% | 16% | 23% | 77% |
| Craven CC | 2,707 | 1,398 | 6% | 51% | 24% | 20% | 80% |
| Davidson County CC | 3,444 | 2,969 | 4% | 52% | 35% | 9% | 91% |
| Durham TCC | 4,588 | 4,707 | 2% | 50% | 27% | 21% | 79% |
| Edgecombe CC | 2,305 | 1,819 | 3% | 39% | 34% | 25% | 75% |
| Fayetteville TCC | 10,560 | 4,801 | 2% | 56% | 23% | 19% | 81% |
| Forsyth TCC | 6,514 | 5,611 | 3% | 50% | 24% | 23% | 77% |
| Gaston College | 4,467 | 2,997 | 5% | 43% | 30% | 22% | 78% |
| Guilford TCC | 9,065 | 5,741 | 2% | 52% | 26% | 20% | 80% |
| Halifax CC | 1,538 | 1,133 | 11% | 43% | 22% | 25% | 75% |
| Haywood CC | 1,935 | 760 | 6% | 43% | 29% | 21% | 79% |
| Isothermal CC | 2,177 | 1,379 | 3% | 58% | 32% | 7% | 93% |
| James Sprunt CC | 1,311 | 1,001 | 6% | 47% | 21% | 26% | 74% |
| Johnston CC | 3,813 | 1,803 | 5% | 49% | 24% | 21% | 79% |
| Lenoir CC | 3,173 | 2,115 | 2% | 46% | 31% | 21% | 79% |
| Martin CC | 925 | 896 | 6% | 65% | 25% | 5% | 95% |
| Mayland CC | 1,963 | 1,143 | 13% | 43% | 27% | 17% | 83% |
| McDowell TCC | 1,338 | 751 | 8% | 52% | 26% | 15% | 85% |
| Mitchell CC | 2,272 | 2,185 | 11% | 49% | 16% | 24% | 76% |
| Montgomery CC | 1,010 | 617 | 5% | 35% | 36% | 24% | 76% |
| Nash CC | 2,503 | 1,734 | 5% | 50% | 21% | 25% | 75% |
| Pamlico CC | 575 | 267 | 6% | 33% | 37% | 23% | 77% |
| Piedmont CC | 2,547 | 911 | 9% | 36% | 32% | 24% | 76% |
| Pitt CC | 5,656 | 2,579 | 6% | 49% | 21% | 24% | 76% |
| Randolph CC | 2,428 | 1,795 | 8% | 48% | 23% | 21% | 79% |
| Richmond CC | 2,040 | 2,386 | 7% | 44% | 24% | 25% | 75% |
| Roanoke-Chowan CC | 949 | 753 | 7% | 59% | 13% | 22% | 78% |
| Robeson CC | 3,671 | 2,886 | 2% | 50% | 32% | 17% | 83% |
| Rockingham CC | 2,060 | 1,091 | 8% | 48% | 33% | 11% | 89% |
| Rowan-Cabarrus CC | 4,685 | 3,199 | 12% | 50% | 16% | 22% | 78% |
| Sampson CC | 1,761 | 1,305 | 6% | 39% | 26% | 29% | 71% |
| Sandhills CC | 3,612 | 1,518 | 13% | 40% | 28% | 19% | 81% |
| South Piedmont CC | 2,156 | 2,021 | 4% | 43% | 39% | 14% | 86% |
| Southeastern CC | 2,381 | 1,287 | 8% | 57% | 23% | 11% | 89% |
| Southwestern CC | 2,216 | 1,597 | 6% | 36% | 38% | 20% | 80% |
| Stanly CC | 2,290 | 1,565 | 8% | 51% | 24% | 16% | 84% |
| Surry CC | 2,960 | 1,456 | 10% | 44% | 25% | 21% | 79% |
| Tri-County CC | 1,076 | 378 | 11% | 49% | 28% | 12% | 88% |
| Vance-Granville CC | 4,213 | 2,733 | 13% | 39% | 26% | 22% | 78% |
| Wake TCC | 11,166 | 7,762 | 5% | 53% | 27% | 15% | 85% |
| Wayne CC | 3,479 | 2,710 | 2% | 44% | 34% | 20% | 80% |
| Western Piedmont CC | 2,959 | 2,394 | 12% | 64% | 11% | 13% | 87% |
| Wilkes CC | 2,757 | 1,457 | 3% | 51% | 32% | 13% | 87% |
| Wilson TCC | 2,112 | 1,841 | 5% | 50% | 25% | 20% | 80% |
| System Totals | 198,759 | 135,246 | 6% | 50% | 25% | 20% | 80% |

**WAKE TECHNICAL COMMUNITY COLLEGE
EXTENSION FTE (INCLUDES BASIC SKILLS, LEARNING LAB,
OCCUPATIONAL EXTENSION, FOCUSED INDUSTRY TRAINING,
HUMAN RESOURCES DEVELOPMENT, NEW & EXPANDING
INDUSTRY, SMALL BUSINESS CENTER, JOB TRAINING
PARTNER, & COMMUNITY SERVICE)**

| YEAR | FALL | SPRING | SUMMER |
|-------------|-------------|---------------|---------------|
| 1998-1999 | 815 | 870 | 592 |
| 1999-2000 | 864 | 763.7 | 608.6 |
| 2000-2001 | 816 | 815.1 | 513 |
| 2001-2002 | 861.2 | 862 | 563 |
| 2002-2003 | 921 | 897 | 561 |
| 2003-2004 | 935 | 930 | 599 |
| 2004-2005 | 996 | 948.5 | 691 |
| 2005-2006 | 973 | 1,104.5 | 726 |
| 2006-2007 | 1,082 | 1,116 | 727 |

HRD is not Self-Support

JANUARY 2008

SOURCE: NORTH CAROLINA COMMUNITY COLLEGE STUDENT ENROLLMENT BY RACE AND
GENDER BY COLLEGE ANNTBL 9 (CONTINUING EDUCATION)

WAKE TECHNICAL COMMUNITY COLLEGE
BASIC SKILLS FTE (INCLUDES ADULT HIGH SCHOOL,
ABE, COMPENSATORY EDUCATION)
LAST 5 YEARS

| <i>YEAR</i> | <i>FALL</i> | <i>SPRING</i> | <i>SUMMER</i> |
|--------------------|--------------------|----------------------|----------------------|
| 2002-2003 | 357 | 342.1 | 226.1 |
| 2003-2004 | 362 | 367.3 | 237.8 |
| 2004-2005 | 394 | 378.7 | 238 |
| 2005-2006 | 375 | 383 | 257 |
| 2006-2007 | 391 | 390 | 257 |

JANUARY 2008

SOURCE: NORTH CAROLINA COMMUNITY COLLEGE STUDENT ENROLLMENT BY RACE AND
GENDER BY COLLEGE ANNTBL 9 (CONTINUING EDUCATION)

WAKE TECHNICAL COMMUNITY COLLEGE

SELF-SUPPORTING FTE (INCLUDES: OCCUPATIONAL EXTENSION RECEIPT, FOCUSED INDUSTRY TRAINING, SMALL BUSINESS CENTER, JOB TRAINING PARTNERSHIP, LEARNING LAB, COMMUNITY SERVICE SELF-SUPPORTING)

LAST 5 YEARS

| YEAR | FALL | SPRING | SUMMER |
|-----------|------|--------|--------|
| 2002-2003 | 51 | 50.3 | 23.8 |
| 2003-2004 | 45 | 57.2 | 30.6 |
| 2004-2005 | 44 | 42.7 | 40 |
| 2005-2006 | 56 | 52 | 37 |
| 2006-2007 | 96 | 91 | 56 |

**NEW AND EXPANDING INDUSTRY FTE
LAST 5 YEARS**

| YEAR | FALL | SPRING | SUMMER |
|-----------|------|--------|--------|
| 2002-2003 | 14 | 6.6 | 3.7 |
| 2003-2004 | 5 | 4.6 | 3.3 |
| 2004-2005 | 8 | 21.5 | 50 |
| 2005-2006 | 45 | 92 | 78 |
| 2006-2007 | 62 | 114 | 78 |

JANUARY 2008

SOURCE: NORTH CAROLINA COMMUNITY COLLEGE

STUDENT ENROLLMENT BY RACE AND GENDER BY COLLEGE ANNTBL 9 (CONTINUING EDUCATION)

ANNUAL CURRICULUM AND CONTINUING EDUCATION FULL-TIME EQUIVALENT (FTE) TABLE 5EM (FALL, SPRING, SUMMER)

WAKE TECHNICAL COMMUNITY COLLEGE

CONTINUING EDUCATION SERVICES

CORRECTIONS EDUCATION

| Year | 2002 | 2003 | 2004 | 2005 | 2006 | 2007 |
|-----------------|--------|--------|--------|-------|--------|--------|
| Classes | 372 | 407 | 415 | 397 | 382 | 468 |
| Students | 4,036 | 4,497 | 4,263 | 4,387 | 4,452 | 3,067 |
| FTE | 272.03 | 313.46 | 307.65 | 296 | 303.57 | 324.49 |

EVENING DIVISION (Non-Credit)

| Year | 2002 | 2003 | 2004 | 2005 | 2006 | 2007 |
|-----------------|--------|--------|--------|--------|--------|-------|
| Classes | 1,255 | 1,511 | 1,435 | 1,478 | 713 | 635 |
| Students | 14,633 | 14,442 | 13,969 | 12,857 | 10,267 | 8,636 |

FIRE SERVICES TRAINING

| Year | 2002 | 2003 | 2004 | 2005 | 2006 | 2007 |
|-----------------|--------|--------|--------|--------|--------|--------|
| Classes | 551 | 565 | 760 | 648 | 745 | 1,008 |
| Students | 8,421 | 7,924 | 10,272 | 9,481 | 10,462 | 15,208 |
| FTE | 115.61 | 115.40 | 141.56 | 128.95 | 143.26 | 194.09 |

LAW ENFORCEMENT TRAINING

| Year | 2002 | 2003 | 2004 | 2005 | 2006 | 2007 |
|-----------------|--------|--------|--------|--------|--------|--------|
| Classes | 386 | 492 | 605 | 515 | 462 | 544 |
| Students | 6,372 | 9,081 | 12,486 | 12,510 | 12,640 | 14,085 |
| FTE | 147.75 | 173.51 | 221.66 | 214.49 | 248.35 | 252.67 |

WORKPLACE BASIC SKILLS (ABE/GED, WORKPLACE SPECIFIC, AND ESL)

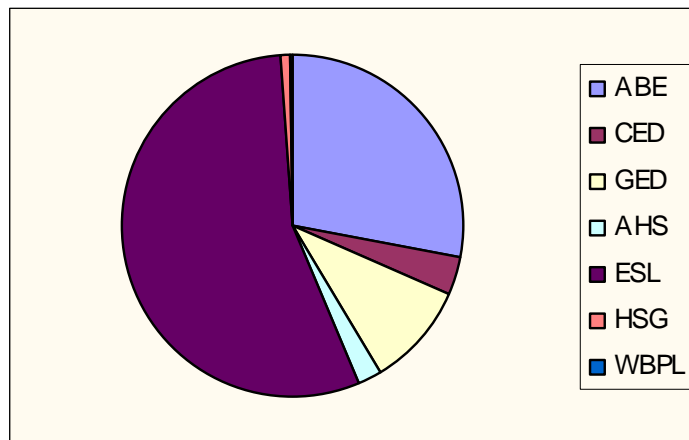
| Year | 2002 | 2003 | 2004 | 2005 | 2006 | 2007 |
|------------------|------|------|------|------|------|------|
| Classes | 23 | 11 | 9 | 8 | 5 | 9 |
| Employers | 21 | 9 | 7 | 6 | 4 | 6 |
| Students | 483 | 247 | 172 | 192 | 117 | 209 |

SOURCE: WAKE TECHNICAL COMMUNITY COLLEGE CONTINUING EDUCATION, JANUARY 2008

2006 – 2007 Annual Report Highlights Enrollment

| <i>Program</i> | 2006-2007 | 2005-06 | 2004-2005 | 2003-2004 |
|---------------------------|--------------------|----------------|------------------|------------------|
| ABE | 2476 (-4%) | 2571 | 2840 | 2790 |
| CED* | 283* (-8%) | 307* | 303* | 271 |
| GED | 749 (+3%) | 727 | 718 | 599 |
| AHS | 172 (+51%) | 114 | 113 | 140 |
| ESL | 4299 (+5%) | 4083 | 4072 | 3803 |
| HSG | 66 (+53%) | 43 | 57 | 42 |
| WBPL | 27 (-36%) | 42 | 33 | 67 |
| Basic Skills Total | 7,789 (+3%) | 7,580 | 7,833 | 7,441 |

* Included in ABE figure. Federal reporting changes eliminated CED as a placement. CED students are now placed ABE and are identified by status (CED enrollment reported in Data Warehouse, LITTABLE 06100 "Status of All Participats")



Demographics:

| | 2006-2007 | 2005-2006 | 2004-2005 | 2003-2004 |
|--------------------|------------------|------------------|------------------|------------------|
| Black | 1944 (25%) | 1948 (26%) | 2076 (27%) | 2115 (28%) |
| White | 1579 (20%) | 1586 (21%) | 1713 (22%) | 1620 (22%) |
| Hispanic | 3314 (43%) | 3100 (41%) | 3197 (41%) | 2838 (38%) |
| Asian | 690 (9%) | 778 (10%) | 686 (9%) | 691 (9%) |
| Average Age | ** | 32.1 | 31.7 | 31.7 |

*** *Average age no longer included in Literacy Statistics.; not calculative from Lit. tables**



Employees

WAKE TECHNICAL COMMUNITY COLLEGE

FULL-TIME EMPLOYEES STATISTICS USING EEOC CLASSIFICATION
DATA EFFECTIVE NOVEMBER 2007

| FULL-TIME ANNUAL | MALES | FEMALES | TOTAL |
|-----------------------------------|-------|---------|-------|
| EXECUTIVE/MANAGERIAL | 9 | 1 | 10 |
| INSTRUCTIONAL/FACULTY | 174 | 260 | 434 |
| PROFESSIONAL (NON-FACULTY) | 58 | 108 | 166 |
| SECRETARIAL/CLERICAL | 4 | 96 | 100 |
| TECHNICAL/PARPROFESSIONAL | 12 | 59 | 71 |
| SKILLED CRAFTS | 1 | 0 | 1 |
| SERVICE/MAINTENANCE | 7 | 0 | 7 |
| TOTAL | 265 | 524 | 789 |

OFFICE OF RESEARCH

JANUARY 2008

SOURCE: IPEDS HUMAN RESOURCES SURVEY, JANUARY 2008

WAKE TECHNICAL COMMUNITY COLLEGE

PART-TIME EMPLOYEES USING EEOC CLASSIFICATION BY SEX
DATA EFFECTIVE NOVEMBER 2007

| EEOC CLASSIFICATION | MALES | FEMALES | TOTAL |
|----------------------------|--------------|----------------|--------------|
| EXECUTIVE/MANAGERIAL | 0 | 0 | 0 |
| INSTRUCTIONAL/FACULTY | 257 | 388 | 645 |
| PROFESSIONAL (NON-FACULTY) | 18 | 29 | 47 |
| SECRETARIAL/CLERICAL | 7 | 19 | 26 |
| TECHNICAL/PARPROFESSIONAL | 4 | 22 | 26 |
| SKILLED CRAFTS | 0 | 0 | 0 |
| SERVICE/MAINTENANCE | 0 | 0 | 0 |
| TOTAL | 286 | 458 | 744 |

OFFICE OF RESEARCH

JANUARY 2008

SOURCE: IPEDS HUMAN RESOURCES SURVEY, JANUARY 2008

WAKE TECHNICAL COMUNITY COLLEGE

STAFF INFORMATION REPORT

DATE EFFECTIVE: NOVEMBER 2007

| CATEGORY | FULL-TIME | PART-TIME |
|-----------------------|------------|------------|
| Exec/Admin/Managerial | 10 | 0 |
| Instructional | 434 | 645 |
| Professional | 166 | 47 |
| Clerical | 100 | 26 |
| Tech/Paraprofessional | 71 | 26 |
| Skilled Crafts | 1 | 0 |
| Service Maintenance | 7 | 0 |
| Totals | 789 | 744 |

OFFICE OF RESEARCH
JANUARY 2008
SOURCE: IPEDS HUMAN RESOURCES SURVEY



Facilities

WAKE TECHNICAL COMMUNITY COLLEGE

PERMANENT FACILITIES

| ACADEMIC YEAR | GROSS SQUARE FEET | LEASED |
|------------------|----------------------|--------|
| 1999 | 509,779 | 22,260 |
| 2000 | 509,779 | 22,260 |
| 2001 | 509,779 | 22,260 |
| 2002 | 492,979 | 37,223 |
| 2003 | 733,078 | 37,223 |
| 2004 | 736,397 | 45,513 |
| 2005 | 746,662 | 46,050 |
| 2006 | 844,426 | 58,529 |
| 2007 | 843,726 | 57,829 |

(Ownership of Buildings: Table 18)

SOURCE: FACILITIES INVENTORY AND UTILIZATION STUDY 2007, STATE OF NORTH CAROLINA, THE UNIVERSITY OF NORTH CAROLINA COMMISSION ON HIGHER EDUCATION FACILITIES, CHAPEL HILL, NORTH CAROLINA, OCTOBER 2007

Facilities Inventory and Utilization Study 2006

The primary purpose of this research document is to provide higher education administrators with a detailed statistical profile of the facilities of their own campuses and of other colleges and universities in North Carolina (Facilities Inventory and Utilization Study, 2006).

Capacity/Enrollment Ratio

The capacity/enrollment ratio, often referred to as the C/E ratio, is the amount of instructional and library space on campus divided by the total fall term student clock hours of that institution. In analyzing and comparing the capacity/enrollment ratios, it should be kept in mind that a relatively low ratio generally indicates a high level of space utilization.

Capacity/Enrollment Ratio (Table 1)

| | 2006 | 2005 | 2004 | 2003 | 2002 |
|----------------------------|-------------|-------------|-------------|-------------|-------------|
| Wake Tech CC | 3.75* | 3.09 | 2.67 | 2.85 | 2.28 |
| Central Piedmont CC | 5.07 | 4.54 | 3.85 | 3.39 | 3.59 |
| Fayetteville CC | 3.73 | 3.34 | 3.41 | 2.95 | 3.11 |
| Guilford CC | 3.61 | 3.70 | 3.49 | 3.33 | 3.78 |
| System Average | 4.38 | 4.06 | 3.78 | 3.61 | 3.66 |

* Twelfth lowest figure among the 58 NC Community Colleges in 2005: 3.75

Facilities Inventory and Utilization Study 2006
State of North Carolina Higher Education Comprehensive Planning Program
The University of North Carolina Commission on Higher Education Facilities
Chapel Hill, North Carolina, October 2007

Square Feet of Academic Facilities Per FTE Student

The ratio of an institution's square footage of academic facilities to its full-time equivalent enrollment represents an important index of the instructional utilization of campus facilities. In this table, the FTE enrollments which are reported for the institutions of the Community College System include only credit enrollment generated in all inventoried space (on-campus only = Main Campus, Adult Education Center, and the Health Education Campus)

Square Feet of Academic Facilities Per FTE Student (Table 2)

| | 2006 | 2005 | 2004 | 2003 | 2002 |
|----------------------------|-------------|-------------|-------------|-------------|-------------|
| Wake Tech CC | 75* | 70 | 61 | 61 | 52 |
| Central Piedmont CC | 118 | 107 | 93 | 79 | 82 |
| Fayetteville CC | 73 | 90 | 93 | 81 | 88 |
| Guilford CC | 92 | 95 | 87 | 86 | 92 |
| System Average | 98 | 95 | 89 | 84 | 86 |

* Wake Tech CC had the eighth lowest figures for 2006: 75

Facilities Inventory and Utilization Study 2006
State of North Carolina Higher Education Comprehensive Planning Program
The University of North Carolina Commission on Higher Education Facilities
Chapel Hill, North Carolina, October 2007

Average Weekly Room Hours of Instruction in Classroom

Is the average number of hours that an institution's classrooms are used for instructional purposes each week.

For the purpose of this study, a classroom is defined as a room used to conduct classes that do not require special-purpose equipment for student use.

Daytime utilization is based on all classes with beginning times between and including 5:00 a.m. and 4:59 p.m.; nighttime utilization is based on all other classes. The "All Hours" section in Table 3 indicates the sum of the daytime and nighttime figures for the last five years.

Average Weekly Room Hours of Instruction in Classrooms (Table 3)

| | Daytime Hours | Nighttime Hours | All Hours | | | | |
|----------------------------|--------------------------|----------------------------|------------------|-------------|-------------|-------------|-------------|
| | | | 2006 | 2005 | 2004 | 2003 | 2002 |
| Wake Tech CC | 20.9 | 4.6 | 25.5* | 24.3 | 29.0 | 27.0 | 31.9 |
| Central Piedmont CC | 12.0 | 4.4 | 16.4 | 16.6 | 20.1 | 21.7 | 21.8 |
| Fayetteville CC | 16.6 | 4.6 | 21.2 | 24.2 | 20.6 | 20.5 | 21.4 |
| Guilford CC | 15.1 | 4.9 | 20.0 | 19.3 | 20.0 | 21.7 | 20.5 |
| System Average | 14.6 | 4.7 | 19.3 | 20.0 | 20.5 | 20.8 | 20.6 |

*Wake Tech CC had the seventh highest figure for 2006: 25.5 (ALL HOURS)

Facilities Inventory and Utilization Study 2006
State of North Carolina Higher Education Comprehensive Planning Program
The University of North Carolina Commission on Higher Education Facilities
Chapel Hill, North Carolina, October 2007

Average Weekly Room Hours of Instruction in Class Laboratories

Is the average number of hours that an institution's class laboratories are used for instructional purposes each week.

For purposes of this study, a class laboratory is defined as a room used primarily for regularly scheduled classes that require special-purpose equipment for student participation, experimentation, observation or practice in a field of study.

Daytime utilization is based on all classes with beginning times between and including 5:00 a.m. and 4:59 p.m.; nighttime utilization is based on all other classes. The "All Hours" section in Table 4 indicates the sum of the daytime and nighttime figures for the last five years.

Average Weekly Room Hours of Instruction in Class Laboratories (Table 4)

| | Daytime Hours | Nighttime Hours | All Hours | | | | |
|----------------------------|------------------|--------------------|-----------|------|------|------|------|
| | | | 2006 | 2005 | 2004 | 2003 | 2002 |
| Wake Tech CC | 14.0 | 4.2 | 18.2* | 17.5 | 23.3 | 23.8 | 25.8 |
| Central Piedmont CC | 9.9 | 4.1 | 14.0 | 17.5 | 18.0 | 18.7 | 21.2 |
| Fayetteville CC | 11.9 | 3.1 | 15.0 | 17.9 | 15.8 | 18.5 | 17.3 |
| Guilford CC | 10.2 | 3.5 | 13.7 | 13.0 | 14.8 | 15.1 | 15.2 |
| System Average | 12.4 | 3.8 | 16.2 | 16.9 | 17.4 | 18.1 | 18.0 |

*Wake Tech CC had the twentieth highest figure for 2006: 18.2 (ALL HOURS)

Facilities Inventory and Utilization Study 2006
State of North Carolina Higher Education Comprehensive Planning Program
The University of North Carolina Commission on Higher Education Facilities
Chapel Hill, North Carolina, October 2007

Average Weekly Use of Student Stations in Classrooms

The average number of hours each week that each classroom student station (seat) is used.

Average Weekly Use of Student Stations in Classrooms (Table 5)

| | Daytime Hours | Nighttime Hours | All Hours | | | | |
|----------------------------|------------------|--------------------|-----------|------|------|------|------|
| | | | 2006 | 2005 | 2004 | 2003 | 2002 |
| Wake Tech CC | 11.5 | 2.1 | 13.6* | 15.9 | 18.7 | 16.6 | 21.3 |
| Central Piedmont CC | 7.4 | 2.6 | 10.0 | 10.6 | 12.3 | 13.8 | 12.6 |
| Fayetteville CC | 7.0 | 1.5 | 8.5 | 9.5 | 9.9 | 9.8 | 11.6 |
| Guilford CC | 11.8 | 3.2 | 15.0 | 15.3 | 14.0 | 15.5 | 13.6 |
| System Average | 8.4 | 2.3 | 10.7 | 11.5 | 12.2 | 12.5 | 12.6 |

*Wake Tech CC had the seventh highest figure for 2006: 13.6

Facilities Inventory and Utilization Study 2006
State of North Carolina Higher Education Comprehensive Planning Program
The University of North Carolina Commission on Higher Education Facilities Chapel Hill,
North Carolina, October 2007

Average Weekly Use of Student Stations in Class Laboratories

The average number of hours each week that each class lab student station is used.

Average Weekly Use of Student Stations in Class Laboratories (Table 6)

| | Daytime Hours | Nighttime Hours | All Hours | | | | |
|----------------------------|--------------------------|----------------------------|------------------|-------------|-------------|-------------|-------------|
| | | | 2006 | 2005 | 2004 | 2003 | 2002 |
| Wake Tech CC | 9.2 | 2.5 | 11.7* | 13.0 | 15.6 | 15.7 | 18.4 |
| Central Piedmont CC | 6.3 | 2.6 | 8.9 | 10.9 | 10.0 | 11.0 | 10.7 |
| Fayetteville CC | 6.3 | 1.4 | 7.7 | 8.0 | 8.4 | 10.8 | 10.1 |
| Guilford CC | 8.6 | 2.2 | 10.8 | 9.8 | 10.8 | 11.1 | 10.3 |
| System Average | 7.3 | 1.9 | 9.2 | 10.0 | 10.7 | 11.6 | 11.6 |

* Wake Tech CC had the tenth highest figure for 2006: 11.7

Facilities Inventory and Utilization Study 2006
State of North Carolina Higher Education Comprehensive Planning Program
The University of North Carolina Commission on Higher Education Facilities
Chapel Hill, North Carolina, October 2007

Percent Student Station Utilization Classrooms and Class Laboratories

Percent student station utilization indicates the average percentage of student stations (seats) that are occupied when classrooms or class laboratories are in use.

Percent Student Station Utilization Classrooms and Class Laboratories (Table 7)

Classrooms

| CLASSROOMS | 2006 | 2005 | 2004 | 2003 | 2002 | 2001 |
|----------------------------|-------------|-------------|-------------|-------------|-------------|-------------|
| Wake Tech CC | 53.8* | 65.4 | 65.6 | 63.8 | 67.1 | 63.9 |
| Central Piedmont CC | 61.2 | 61.2 | 60.9 | 62.9 | 56.9 | 54.9 |
| Fayetteville CC | 37.3 | 35.5 | 42.8 | 43.8 | 48.7 | 45.1 |
| Guilford CC | 69.9 | 72.9 | 65.7 | 66.2 | 62.0 | 66.6 |
| System Average | 52.1 | 53.7 | 55.9 | 56.8 | 57.1 | 55.2 |

* Wake Tech CC has the twentieth highest classroom figure for 2006: 53.8

Class Laboratories

| LABORATORIES | 2006 | 2005 | 2004 | 2003 | 2002 | 2001 |
|----------------------------|-------------|-------------|-------------|-------------|-------------|-------------|
| Wake Tech CC | 58.1* | 66.8 | 62.2 | 61.9 | 66.1 | 68.7 |
| Central Piedmont CC | 60.7 | 59.2 | 51.4 | 56.0 | 49.1 | 48.9 |
| Fayetteville CC | 48.5 | 42.1 | 51.4 | 54.3 | 55.7 | 54.2 |
| Guilford CC | 66.8 | 54.1 | 65.5 | 64.6 | 60.5 | 62.4 |
| System Average | 52.4 | 53.9 | 56.5 | 58.8 | 58.5 | 56.3 |

* Wake Tech CC has the tenth highest figure for Class Laboratories for 2006: 58.1

Facilities Inventory and Utilization Study 2006

State of North Carolina Higher Education Comprehensive Planning Program

The University of North Carolina Commission on Higher Education Facilities

Chapel Hill, North Carolina, October 2007

Enrollment

This table for 2002-2006 lists only fall on-campus (inventoried space) credit enrollment. Noncredit enrollments are not included. Instruction which took place in facilities not on a community college's facilities inventory was not considered in determining the FTE enrollment listed. For 2005, the fall on-campus credit FTE is provided, but as a means of comparison, the total fall credit FTE (representing both on-campus and off-campus credit instruction) is listed for selected colleges in parentheses.

FTE Enrollments (Table 12)

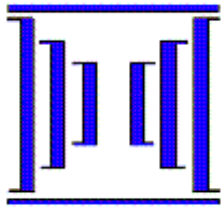
| | 2002 | 2003 | 2004 | 2005 | 2006 |
|----------------------------|-------------------|-------------------|-------------------|-------------------|-------------------|
| Wake Tech CC | 6,536 (7,500) | 6,782 (7,770) | 6,738 (7,982) | 6,874 (8,388) | 6,554 (8,374) |
| Central Piedmont CC | 9,016 (10,078) | 9,102 (10,266) | 8,970 (10,300) | 8,786 (10,628) | 8,828 (10,550) |
| Fayetteville CC | 5,102 (6,696) | 5,454 (7,412) | 5,196 (7,432) | 5,668 (7,566) | 7,302 (7,752) |
| Guilford CC | 5,816 (6,364) | 6,164 (6,700) | 6,524 (7,074) | 6,760 (7,346) | 6,876 (7,600) |

*Figures in parentheses represent total FTE enrollment (both on and off campus).

Facilities Inventory and utilization Study 2006
 State of North Carolina higher Education Comprehensive Planning Program
 The University of North Carolina Commission on Higher Education Facilities
 Chapel Hill, North Carolina, October 2007



Comparisons



North Carolina Community College System

Curriculum/Continuing Education Information System

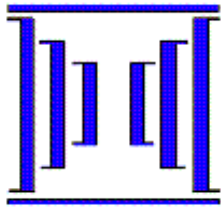
Curriculum and Continuing Education Student Enrollment by College

Table 1 Annual

Reporting Year: 2006 - 2007

Last Refresh on : 10/15/2007

| College Name | Curriculum | | | | | Continuing Education | | | | | | | | | | | Total |
|--------------------------|------------|------|------|-------|----------|----------------------|-----------|--------|------------|-----|-------|---------|-------|----------|------------|--------|--------|
| | Assoc | Dipl | Cert | Trans | Curr Sub | Basic Skills | Learn Lab | Occ RB | Occ Ext SS | FIT | HRD | NIT/EIT | SBC | Comm Svc | Non Occ SS | CE Sub | |
| Alamance CC | 4,006 | 397 | 563 | 1,496 | 6,342 | 3,005 | | 4,236 | 620 | 81 | 1,212 | 54 | 368 | 810 | 546 | 10,424 | 16,208 |
| Asheville-Buncombe TC | 4,491 | 352 | 218 | 4,131 | 9,007 | 3,419 | | 8,179 | 1,256 | 73 | 2,001 | 447 | 1,323 | 1,129 | 1,560 | 17,777 | 25,760 |
| Beaufort County CC | 1,341 | 136 | 60 | 350 | 1,870 | 1,313 | | 3,026 | 190 | 33 | 188 | 91 | 151 | 141 | 529 | 5,449 | 7,101 |
| Bladen CC | 1,399 | 90 | 54 | 353 | 1,879 | 579 | | 1,512 | | 36 | 402 | 98 | 31 | 120 | 359 | 2,991 | 4,716 |
| Blue Ridge CC | 1,643 | 118 | 230 | 886 | 2,802 | 1,493 | 22 | 4,690 | 259 | 216 | 2,606 | 181 | 424 | | 4,497 | 13,132 | 15,478 |
| Brunswick CC | 986 | 204 | 138 | 388 | 1,653 | 969 | | 2,807 | 250 | 27 | 297 | | 160 | 226 | 1,234 | 5,671 | 7,138 |
| Caldwell CC and TI | 2,869 | 925 | 297 | 1,118 | 5,092 | 2,407 | | 3,219 | 997 | 62 | 1,459 | 6 | 615 | 121 | 1,903 | 10,049 | 14,426 |
| Cape Fear CC | 6,800 | 420 | 750 | 1,722 | 9,595 | 3,328 | 2,402 | 7,453 | 300 | 123 | 1,241 | 507 | 673 | 489 | 3,814 | 19,370 | 25,950 |
| Carteret CC | 1,654 | 135 | 101 | 476 | 2,303 | 906 | | 2,716 | 999 | 13 | 388 | | 1,136 | 148 | 359 | 6,329 | 8,170 |
| Catawba Valley CC | 4,456 | 285 | 522 | 1,702 | 6,852 | 3,019 | | 3,939 | 2,499 | 227 | 1,647 | 1,932 | 276 | 750 | 2,593 | 15,562 | 21,585 |
| Central Carolina CC | 3,465 | 547 | 825 | 1,806 | 6,521 | 4,613 | | 6,900 | 388 | 117 | 546 | 641 | | 453 | 920 | 14,120 | 19,893 |
| Central Piedmont CC | 15,957 | 448 | 861 | 7,821 | 24,406 | 10,661 | | 15,303 | 4,795 | 67 | 365 | 1,302 | 1,008 | 2,791 | 3,311 | 36,529 | 59,042 |
| Cleveland CC | 2,543 | 511 | 237 | 1,446 | 4,662 | 721 | | 2,820 | 126 | 29 | 868 | 127 | 613 | 349 | 735 | 6,192 | 10,305 |
| Coastal Carolina CC | 4,885 | 255 | 194 | 1,015 | 6,145 | 3,643 | | 9,016 | 211 | 49 | 372 | 578 | 810 | 353 | 2,952 | 17,079 | 22,093 |
| College of the Albemarle | 2,012 | 179 | 109 | 684 | 2,934 | 2,583 | | 3,445 | 287 | 114 | 65 | 82 | 1,461 | | 849 | 8,529 | 11,115 |
| Craven CC | 3,390 | 152 | 65 | 969 | 4,503 | 1,380 | | 4,823 | 179 | 156 | 4,446 | 194 | 194 | 463 | 1,041 | 12,303 | 16,415 |
| Davidson County CC | 2,885 | 299 | 259 | 759 | 4,123 | 3,020 | | 7,113 | 550 | 362 | 513 | 86 | 495 | | 864 | 12,411 | 15,960 |
| Durham TCC | 4,263 | 192 | 263 | 3,187 | 7,662 | 4,749 | | 8,280 | 2,727 | 54 | 1,418 | 1,301 | 22 | | 586 | 18,360 | 25,444 |
| Edgecombe CC | 2,155 | 242 | 38 | 851 | 3,242 | 1,859 | | 2,442 | 1 | 49 | 1,234 | 82 | 1,057 | 141 | 83 | 6,157 | 9,206 |
| Fayetteville TCC | 9,583 | 635 | 192 | 3,862 | 13,859 | 4,457 | | 9,634 | 3,459 | 78 | 1,884 | 204 | 950 | 1,658 | 628 | 21,296 | 33,930 |
| Forsyth TCC | 6,905 | 565 | 495 | 1,815 | 9,570 | 5,340 | | 9,207 | 2,301 | 322 | 1,197 | 136 | 1,137 | 458 | 1,635 | 20,647 | 29,215 |
| Gaston College | 5,069 | 343 | 228 | 1,285 | 6,835 | 3,086 | | 4,643 | 2,043 | 43 | 3,276 | 1,338 | 387 | 207 | 2,047 | 16,202 | 22,362 |
| Guilford TCC | 11,089 | 573 | 58 | 1,604 | 13,174 | 5,714 | | 9,527 | 3,289 | 182 | 2,930 | 678 | 626 | 702 | 5,465 | 27,591 | 39,725 |
| Halifax CC | 1,280 | 141 | 296 | 284 | 1,985 | 1,185 | | 2,971 | 353 | 64 | 527 | 111 | 640 | 162 | 139 | 5,826 | 7,545 |
| Haywood CC | 1,340 | 259 | 291 | 1,215 | 3,045 | 819 | 316 | 2,148 | 86 | 19 | 156 | | 409 | 126 | 212 | 4,071 | 6,638 |
| Isothermal CC | 1,841 | 229 | 131 | 804 | 2,923 | 1,181 | | 1,079 | 1,318 | 25 | 635 | 182 | 267 | | 3,951 | 7,701 | 10,159 |
| James Sprunt CC | 794 | 324 | 129 | 424 | 1,596 | 852 | 103 | 2,611 | | 13 | 580 | | 760 | 133 | 2,724 | 7,336 | 8,631 |
| Johnston CC | 2,635 | 205 | 610 | 1,615 | 4,948 | 1,747 | | 4,071 | 323 | 103 | 506 | 480 | 918 | 203 | 1,628 | 9,537 | 13,959 |
| Lenoir CC | 2,319 | 116 | 155 | 1,295 | 3,788 | 2,138 | | 5,122 | 10 | 41 | 1,253 | 242 | 543 | 181 | 1,600 | 10,355 | 13,615 |
| Martin CC | 709 | 71 | 27 | 380 | 1,175 | 951 | | 1,634 | 99 | 7 | 393 | 57 | 240 | 280 | | 3,415 | 4,471 |
| Mayland CC | 842 | 136 | 400 | 929 | 2,243 | 1,169 | | 2,199 | 659 | 11 | 756 | 220 | 357 | 29 | 751 | 5,510 | 7,221 |
| McDowell TCC | 934 | 249 | 177 | 357 | 1,671 | 634 | | 3,052 | 939 | 126 | 1,241 | 134 | 71 | 74 | 1,131 | 7,002 | 8,295 |
| Mitchell CC | 2,273 | 213 | 180 | 923 | 3,518 | 2,057 | | 2,960 | 1,443 | 35 | 1,239 | 88 | 407 | 83 | 882 | 8,511 | 11,645 |



North Carolina Community College System

Curriculum/Continuing Education Information System

Curriculum and Continuing Education Student Enrollment by College

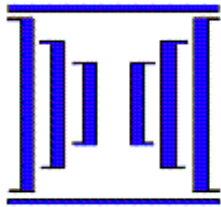
Table 1 Annual

Reporting Year: 2006 - 2007

Last Refresh on : 10/15/2007

| College Name | Curriculum | | | | | Continuing Education | | | | | | | | | | | Total |
|---------------------|------------|--------|--------|--------|----------|----------------------|-----------|---------|------------|-------|--------|---------|--------|----------|------------|---------|---------|
| | Assoc | Dipl | Cert | Trans | Curr Sub | Basic Skills | Learn Lab | Occ RB | Occ Ext SS | FIT | HRD | NIT/EIT | SBC | Comm Svc | Non Occ SS | CE Sub | |
| Montgomery CC | 837 | 98 | 127 | 300 | 1,335 | 614 | | 1,701 | 261 | 36 | 116 | | 307 | 84 | 14 | 2,952 | 4,073 |
| Nash CC | 2,399 | 88 | 212 | 1,002 | 3,673 | 1,730 | | 3,634 | 462 | 109 | 896 | 502 | 442 | 280 | 249 | 7,886 | 11,189 |
| Pamlico CC | 276 | 29 | 144 | 156 | 596 | 285 | | 715 | | | 130 | | 186 | 190 | 11 | 1,394 | 1,855 |
| Piedmont CC | 1,633 | 221 | 580 | 1,323 | 3,718 | 948 | | 2,763 | 125 | 94 | 589 | 287 | 450 | 71 | 56 | 5,335 | 8,682 |
| Pitt CC | 6,272 | 253 | 260 | 2,056 | 8,673 | 2,478 | | 4,730 | 2,516 | 110 | 1,597 | 87 | 581 | 114 | 291 | 11,691 | 19,449 |
| Randolph CC | 1,748 | 500 | 100 | 953 | 3,215 | 1,761 | | 4,200 | 476 | 283 | 715 | 196 | 395 | 170 | 711 | 8,464 | 11,389 |
| Richmond CC | 1,686 | 75 | 126 | 257 | 2,058 | 2,403 | | 1,984 | 85 | 219 | 623 | 411 | 447 | 6 | | 5,766 | 7,670 |
| Roanoke Chowan CC | 834 | 125 | 127 | 211 | 1,278 | 744 | | 1,196 | | 110 | 182 | | 265 | 222 | 71 | 2,697 | 3,857 |
| Robeson CC | 2,496 | 154 | 220 | 313 | 3,143 | 2,880 | | 5,515 | 412 | 164 | 1,848 | 289 | 486 | 220 | 269 | 11,446 | 14,091 |
| Rockingham CC | 1,615 | 222 | 547 | 413 | 2,696 | 1,199 | | 2,945 | 715 | 193 | 742 | 192 | 367 | 252 | 2,093 | 8,140 | 10,367 |
| Rowan-Cabarrus CC | 4,073 | 1,506 | 432 | 1,116 | 6,956 | 3,080 | | 6,358 | 1,690 | 71 | 2,063 | 678 | 406 | 147 | 499 | 13,759 | 19,991 |
| Sampson CC | 1,245 | 116 | 90 | 443 | 1,862 | 1,383 | | 2,237 | 60 | 163 | 1,197 | | 332 | 167 | 975 | 5,971 | 7,540 |
| Sandhills CC | 3,421 | 115 | 231 | 1,377 | 5,013 | 1,508 | | 3,726 | 505 | 40 | 273 | 146 | 933 | 199 | 438 | 7,329 | 11,995 |
| Southeastern CC | 1,854 | 219 | 202 | 618 | 2,786 | 1,229 | | 4,089 | 47 | 21 | 1,525 | 149 | 1,354 | 708 | 7 | 8,226 | 10,240 |
| South Piedmont CC | 1,713 | 289 | 279 | 601 | 2,791 | 2,097 | | 2,070 | 1,104 | 145 | 1,599 | 35 | 395 | 50 | 138 | 7,212 | 9,590 |
| Southwestern CC | 1,848 | 72 | 248 | 706 | 2,818 | 1,628 | | 3,624 | 349 | 15 | 637 | | 345 | | 257 | 5,832 | 8,470 |
| Stanly CC | 2,074 | 158 | 396 | 1,003 | 3,518 | 1,500 | | 2,993 | 207 | 33 | 440 | 207 | 150 | 58 | | 5,338 | 8,494 |
| Surry CC | 2,396 | 620 | 149 | 1,006 | 4,049 | 1,524 | | 4,512 | 92 | 371 | 932 | 102 | 471 | 257 | 1,403 | 9,008 | 12,538 |
| Tri-county CC | 908 | 61 | 50 | 475 | 1,473 | 485 | | 1,582 | 274 | 46 | 115 | 153 | 440 | 493 | 123 | 3,485 | 4,713 |
| Vance-Granville CC | 3,867 | 542 | 388 | 1,005 | 5,726 | 2,678 | | 6,621 | 327 | 1,012 | 1,301 | 525 | 480 | 518 | 113 | 12,613 | 17,585 |
| Wake TCC | 13,347 | 469 | 893 | 2,420 | 16,898 | 8,054 | 3,053 | 19,415 | 2,364 | 286 | 2,543 | 2,840 | 1,150 | 2,403 | 394 | 40,142 | 54,110 |
| Wayne CC | 3,260 | 205 | 162 | 824 | 4,376 | 2,688 | 236 | 3,936 | 9 | 68 | 1,757 | 63 | 765 | 206 | 659 | 9,351 | 13,232 |
| Western Piedmont CC | 2,751 | 90 | 148 | 724 | 3,638 | 2,389 | 160 | 4,636 | 1,320 | 111 | 654 | 197 | 328 | 308 | 1,644 | 10,948 | 14,069 |
| Wilkes CC | 2,293 | 100 | 55 | 874 | 3,259 | 1,423 | | 5,305 | 793 | 1,296 | 1,963 | 103 | 285 | 399 | 223 | 10,806 | 13,542 |
| Wilson CC | 1,875 | 149 | 144 | 708 | 2,824 | 1,840 | | 4,993 | 793 | 108 | 215 | 216 | 249 | 324 | 124 | 8,339 | 10,828 |
| System Total | 182,609 | 16,367 | 15,417 | 67,665 | 272,244 | 131,519 | 6,289 | 240,047 | 47,630 | 8,054 | 61,861 | 18,930 | 30,394 | 20,570 | 62,100 | 578,545 | 809,091 |

****Unduplicated headcounts are reported in each cell. Rows and columns will not add up.****



North Carolina Community College System

Curriculum Student Information II

Student Enrollment by Race and Gender by College

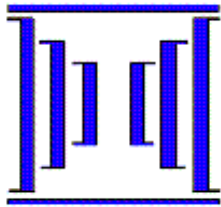
(Unduplicated Headcount)

ANNTBL8 - II

Reporting Year: 2006-2007

Last Refresh on : 10/16/2007

| | Am Ind Fem | Am Ind Male | Asian Fem | Asian Male | Black Fem | Black Male | Hisp Fem | Hisp Male | Other Fem | Other Male | White Fem | White Male | Grand Total |
|---------------------------------|---------------|----------------|--------------|---------------|--------------|---------------|-------------|--------------|--------------|---------------|--------------|---------------|----------------|
| Alamance CC | 24 | 12 | 62 | 33 | 1,099 | 405 | 133 | 85 | 211 | 110 | 2,556 | 1,615 | 6,345 |
| Asheville-Buncombe TCC | 27 | 27 | 36 | 40 | 315 | 188 | 94 | 91 | 182 | 142 | 4,432 | 3,444 | 9,018 |
| Beaufort County CC | 2 | 2 | 3 | | 508 | 127 | 17 | 10 | 11 | 9 | 739 | 443 | 1,871 |
| Bladen CC | 233 | 23 | 9 | 1 | 621 | 175 | 16 | 11 | 24 | 13 | 542 | 212 | 1,880 |
| Blue Ridge CC | 9 | 7 | 14 | 7 | 114 | 29 | 80 | 40 | 19 | 12 | 1,536 | 935 | 2,802 |
| Brunswick CC | 12 | 6 | 7 | 2 | 267 | 69 | 37 | 12 | 28 | 11 | 839 | 364 | 1,654 |
| Caldwell CC and TI | 7 | 6 | 24 | 14 | 154 | 114 | 32 | 35 | 73 | 65 | 2,475 | 2,099 | 5,098 |
| Cape Fear CC | 36 | 54 | 38 | 31 | 942 | 486 | 111 | 99 | 191 | 143 | 3,913 | 3,554 | 9,598 |
| Carteret CC | 8 | 4 | 21 | 9 | 181 | 44 | 37 | 19 | 61 | 29 | 1,327 | 569 | 2,309 |
| Catawba Valley CC | 13 | 7 | 218 | 198 | 392 | 232 | 147 | 107 | 38 | 19 | 3,381 | 2,100 | 6,852 |
| Central Carolina CC | 30 | 23 | 40 | 16 | 1,112 | 511 | 212 | 142 | 59 | 61 | 2,668 | 1,647 | 6,521 |
| Central Piedmont CC | 62 | 54 | 557 | 507 | 5,485 | 2,537 | 788 | 564 | 418 | 329 | 7,027 | 6,082 | 24,410 |
| Cleveland CC | 9 | 7 | 20 | 16 | 830 | 303 | 38 | 18 | 87 | 39 | 2,102 | 1,194 | 4,663 |
| Coastal Carolina CC | 33 | 15 | 127 | 85 | 805 | 372 | 366 | 208 | 83 | 32 | 2,580 | 1,444 | 6,150 |
| College of the Albemarle | 26 | 15 | 13 | 6 | 508 | 200 | 45 | 16 | 22 | 31 | 1,399 | 654 | 2,935 |
| Craven CC | 15 | 11 | 40 | 44 | 733 | 291 | 92 | 98 | 85 | 44 | 1,793 | 1,257 | 4,503 |
| Davidson County CC | 17 | 7 | 39 | 24 | 429 | 118 | 53 | 43 | 31 | 27 | 2,249 | 1,086 | 4,123 |
| Durham TCC | 15 | 10 | 272 | 155 | 2,344 | 953 | 248 | 118 | 344 | 242 | 1,698 | 1,264 | 7,663 |



North Carolina Community College System

Curriculum Student Information II

Student Enrollment by Race and Gender by College

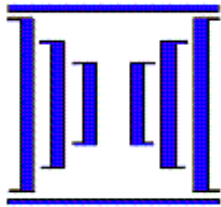
(Unduplicated Headcount)

ANNTBL8 - II

Reporting Year: 2006-2007

Last Refresh on : 10/16/2007

| | Am Ind Fem | Am Ind Male | Asian Fem | Asian Male | Black Fem | Black Male | Hisp Fem | Hisp Male | Other Fem | Other Male | White Fem | White Male | Grand Total |
|------------------|---------------|----------------|--------------|---------------|--------------|---------------|-------------|--------------|--------------|---------------|--------------|---------------|----------------|
| Edgecombe CC | 14 | 6 | 5 | 2 | 1,508 | 408 | 20 | 20 | 19 | 9 | 826 | 405 | 3,242 |
| Fayetteville TCC | 284 | 79 | 197 | 99 | 4,261 | 1,519 | 606 | 365 | 459 | 209 | 3,788 | 2,003 | 13,869 |
| Forsyth TCC | 33 | 20 | 93 | 53 | 1,856 | 776 | 172 | 136 | 194 | 122 | 3,824 | 2,295 | 9,574 |
| Gaston College | 17 | 15 | 38 | 23 | 792 | 238 | 105 | 66 | 211 | 139 | 3,368 | 1,823 | 6,835 |
| Guilford TCC | 48 | 28 | 207 | 188 | 3,198 | 1,690 | 194 | 183 | 165 | 125 | 3,706 | 3,454 | 13,186 |
| Halifax CC | 22 | 16 | 5 | 4 | 731 | 375 | 8 | 9 | 9 | 18 | 525 | 263 | 1,985 |
| Haywood CC | 18 | 12 | 6 | 3 | 102 | 14 | 11 | 15 | 3 | 7 | 1,680 | 1,176 | 3,047 |
| Isothermal CC | 9 | 6 | 8 | 3 | 285 | 141 | 37 | 23 | 21 | 24 | 1,408 | 958 | 2,923 |
| James Sprunt CC | 3 | 11 | 7 | 5 | 466 | 178 | 39 | 23 | 8 | 13 | 564 | 279 | 1,596 |
| Johnston CC | 25 | 20 | 18 | 15 | 690 | 483 | 160 | 131 | 56 | 58 | 2,531 | 1,569 | 5,756 |
| Lenoir CC | 4 | 3 | 14 | 7 | 1,049 | 413 | 28 | 39 | 75 | 44 | 1,346 | 767 | 3,789 |
| Martin CC | 2 | 2 | 3 | 1 | 477 | 167 | 7 | 4 | 12 | 7 | 313 | 180 | 1,175 |
| Mayland CC | | 10 | 2 | 5 | 9 | 77 | 8 | 27 | 1 | 6 | 1,149 | 949 | 2,243 |
| McDowell TCC | 5 | 6 | 10 | 8 | 64 | 43 | 9 | 6 | 6 | 4 | 961 | 549 | 1,671 |
| Mitchell CC | 11 | 2 | 38 | 25 | 465 | 135 | 63 | 38 | 27 | 14 | 1,732 | 968 | 3,518 |
| Montgomery CC | 8 | 2 | 20 | 6 | 232 | 57 | 34 | 25 | 6 | 1 | 631 | 313 | 1,335 |
| Nash CC | 37 | 31 | 15 | 11 | 892 | 314 | 39 | 24 | 62 | 45 | 1,121 | 1,083 | 3,674 |
| Pamlico CC | 1 | 1 | 1 | 2 | 128 | 118 | 2 | 3 | 4 | 5 | 209 | 122 | 596 |
| Piedmont CC | 12 | 14 | 4 | 6 | 840 | 638 | 14 | 38 | 33 | 54 | 1,121 | 946 | 3,720 |



North Carolina Community College System

Curriculum Student Information II

Student Enrollment by Race and Gender by College

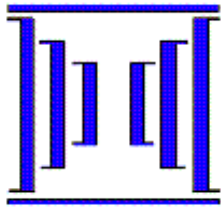
(Unduplicated Headcount)

ANNTBL8 - II

Reporting Year: 2006-2007

Last Refresh on : 10/16/2007

| | Am Ind Fem | Am Ind Male | Asian Fem | Asian Male | Black Fem | Black Male | Hisp Fem | Hisp Male | Other Fem | Other Male | White Fem | White Male | Grand Total |
|----------------------------|---------------|----------------|--------------|---------------|--------------|---------------|-------------|--------------|--------------|---------------|--------------|---------------|----------------|
| Pitt CC | 24 | 14 | 51 | 37 | 2,068 | 876 | 85 | 78 | 185 | 130 | 2,813 | 2,316 | 8,677 |
| Randolph CC | 6 | 6 | 24 | 18 | 198 | 56 | 94 | 54 | 19 | 7 | 1,856 | 877 | 3,215 |
| Richmond CC | 135 | 36 | 9 | 4 | 574 | 169 | 10 | 8 | 1 | 2 | 784 | 328 | 2,060 |
| Roanoke Chowan CC | 5 | 4 | 4 | 2 | 570 | 261 | 6 | 1 | 1 | 1 | 286 | 137 | 1,278 |
| Robeson CC | 1,018 | 257 | 6 | 9 | 756 | 266 | 22 | 16 | 18 | 20 | 493 | 262 | 3,143 |
| Rockingham CC | 8 | 3 | 17 | 6 | 394 | 132 | 28 | 11 | 23 | 11 | 1,285 | 778 | 2,696 |
| Rowan-Cabarrus CC | 21 | 20 | 76 | 25 | 1,048 | 366 | 109 | 70 | 53 | 23 | 3,262 | 1,884 | 6,957 |
| Sampson CC | 48 | 14 | 6 | 2 | 527 | 127 | 69 | 36 | 5 | 4 | 725 | 299 | 1,862 |
| Sandhills CC | 180 | 61 | 37 | 15 | 901 | 273 | 88 | 50 | 111 | 55 | 1,961 | 1,282 | 5,014 |
| Southeastern CC | 126 | 48 | 3 | 2 | 574 | 283 | 11 | 10 | 30 | 34 | 1,096 | 569 | 2,786 |
| South Piedmont CC | 12 | 10 | 15 | 15 | 676 | 284 | 43 | 22 | 26 | 19 | 1,109 | 560 | 2,791 |
| Southwestern CC | 172 | 61 | 18 | 17 | 21 | 21 | 20 | 25 | 43 | 22 | 1,520 | 880 | 2,820 |
| Stanly CC | 15 | 8 | 44 | 41 | 434 | 142 | 29 | 17 | 53 | 32 | 1,923 | 781 | 3,519 |
| Surry CC | 7 | 1 | 11 | 10 | 124 | 60 | 47 | 53 | 20 | 13 | 2,341 | 1,362 | 4,049 |
| Tri-county CC | 20 | 4 | 6 | | 5 | 1 | 11 | 3 | 20 | 9 | 901 | 496 | 1,476 |
| Vance-Granville CC | 31 | 23 | 16 | 10 | 1,656 | 869 | 57 | 76 | 85 | 91 | 1,762 | 1,052 | 5,728 |
| Wake TCC | 43 | 42 | 483 | 359 | 2,460 | 1,241 | 442 | 329 | 1,198 | 1,020 | 4,891 | 4,397 | 16,905 |
| Wayne CC | 22 | 11 | 55 | 24 | 1,008 | 321 | 81 | 57 | 138 | 74 | 1,631 | 958 | 4,380 |
| Western Piedmont CC | 2 | 1 | 112 | 68 | 192 | 114 | 26 | 21 | 48 | 30 | 1,956 | 1,073 | 3,643 |



North Carolina Community College System

Curriculum Student Information II

Student Enrollment by Race and Gender by College

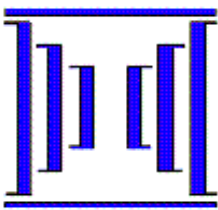
(Unduplicated Headcount)

ANNTBL8 - II

Reporting Year: 2006-2007

Last Refresh on : 10/16/2007

| | Am Ind Fem | Am Ind Male | Asian Fem | Asian Male | Black Fem | Black Male | Hisp Fem | Hisp Male | Other Fem | Other Male | White Fem | White Male | Grand Total |
|-----------|---------------|----------------|--------------|---------------|--------------|---------------|-------------|--------------|--------------|---------------|--------------|---------------|----------------|
| Wilkes CC | 10 | 6 | 14 | 8 | 108 | 66 | 39 | 34 | 20 | 17 | 1,818 | 1,122 | 3,262 |
| Wilson CC | 6 | 5 | 13 | 3 | 1,048 | 234 | 67 | 20 | 21 | 10 | 888 | 511 | 2,826 |
| Total: | 3,042 | 1,209 | 3,251 | 2,329 | 50,226 | 21,100 | 5,486 | 3,882 | 5,456 | 3,886 | 109,360 | 71,989 | 281,216 |



North Carolina Community College System

Continuing Education Student Information

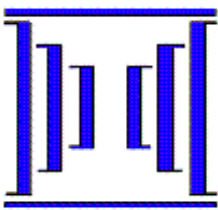
Student Enrollment by Race and Gender by College (Unduplicated Headcount)

ANNTBL9

Reporting Year: 2006-2007

Last Refresh on : 10/16/2007

| | Asian Male | Asian Female | Black Male | Black Female | Hispanic Male | Hispanic Female | Indian (American) Male | Indian (American) Female | Other Male | Other Female | White Male | White Female | Male Total | Female Total | Grand Total |
|--------------------------|---------------|-----------------|---------------|-----------------|------------------|--------------------|------------------------------|--------------------------------|---------------|-----------------|---------------|-----------------|---------------|-----------------|----------------|
| Alamance CC | 56 | 66 | 847 | 1,231 | 619 | 787 | 22 | 20 | 45 | 91 | 3,532 | 3,108 | 5,121 | 5,303 | 10,424 |
| Asheville-Buncombe TCC | 75 | 96 | 674 | 725 | 555 | 446 | 62 | 51 | 74 | 107 | 7,003 | 7,913 | 8,443 | 9,338 | 17,781 |
| Beaufort County CC | 7 | 7 | 828 | 928 | 156 | 205 | 11 | 4 | 46 | 56 | 1,786 | 1,427 | 2,834 | 2,627 | 5,461 |
| Bladen CC | 4 | 2 | 523 | 647 | 46 | 42 | 79 | 94 | 10 | 10 | 891 | 643 | 1,553 | 1,438 | 2,991 |
| Blue Ridge CC | 70 | 61 | 511 | 270 | 558 | 406 | 35 | 24 | 69 | 52 | 6,351 | 4,726 | 7,594 | 5,539 | 13,133 |
| Brunswick CC | 17 | 21 | 272 | 328 | 283 | 159 | 22 | 28 | 2 | 9 | 2,265 | 2,266 | 2,861 | 2,811 | 5,672 |
| Caldwell CC & TI | 33 | 37 | 271 | 332 | 292 | 234 | 12 | 14 | 44 | 35 | 4,665 | 4,081 | 5,317 | 4,733 | 10,050 |
| Cape Fear CC | 82 | 102 | 1,859 | 1,882 | 783 | 468 | 119 | 63 | 175 | 168 | 8,140 | 5,530 | 11,158 | 8,213 | 19,371 |
| Carteret CC | 17 | 33 | 354 | 352 | 177 | 164 | 24 | 22 | 24 | 17 | 2,564 | 2,581 | 3,160 | 3,169 | 6,329 |
| Catawba Valley CC | 238 | 222 | 760 | 769 | 622 | 735 | 35 | 22 | 42 | 21 | 6,517 | 5,579 | 8,214 | 7,348 | 15,562 |
| Central Carolina CC | 51 | 57 | 1,320 | 1,730 | 1,274 | 1,020 | 58 | 66 | 69 | 62 | 4,785 | 3,628 | 7,557 | 6,563 | 14,120 |
| Central Piedmont CC | 721 | 637 | 4,749 | 6,326 | 2,143 | 2,624 | 85 | 74 | 876 | 869 | 9,912 | 7,532 | 18,486 | 18,062 | 36,548 |
| Cleveland CC | 16 | 15 | 491 | 708 | 65 | 80 | 5 | 6 | 9 | 8 | 2,803 | 1,986 | 3,389 | 2,803 | 6,192 |
| Coastal Carolina CC | 161 | 192 | 1,523 | 1,456 | 991 | 618 | 60 | 45 | 476 | 451 | 6,298 | 4,808 | 9,509 | 7,570 | 17,079 |
| College of The Albemarle | 18 | 26 | 955 | 845 | 265 | 192 | 31 | 26 | 43 | 83 | 3,065 | 2,982 | 4,377 | 4,154 | 8,531 |
| Craven CC | 93 | 92 | 3,282 | 996 | 436 | 179 | 171 | 22 | 91 | 19 | 4,521 | 2,401 | 8,594 | 3,709 | 12,303 |
| Davidson County CC | 52 | 68 | 559 | 625 | 315 | 354 | 29 | 26 | 32 | 24 | 6,191 | 4,142 | 7,178 | 5,239 | 12,417 |
| Durham TCC | 413 | 602 | 2,750 | 3,078 | 1,243 | 1,341 | 42 | 30 | 324 | 342 | 4,696 | 3,499 | 9,468 | 8,892 | 18,360 |
| Edgecombe CC | 21 | 15 | 1,118 | 1,909 | 114 | 106 | 11 | 58 | 10 | 20 | 1,263 | 1,512 | 2,537 | 3,620 | 6,157 |
| Fayetteville TCC | 165 | 400 | 3,121 | 4,582 | 755 | 1,058 | 245 | 194 | 280 | 306 | 6,025 | 4,617 | 10,591 | 11,157 | 21,748 |
| Forsyth TCC | 129 | 190 | 1,954 | 2,748 | 1,165 | 1,260 | 38 | 43 | 114 | 129 | 6,380 | 6,531 | 9,780 | 10,901 | 20,681 |
| Gaston College | 81 | 68 | 1,343 | 1,522 | 490 | 608 | 45 | 31 | 78 | 97 | 6,951 | 4,888 | 8,988 | 7,214 | 16,202 |
| Guilford TCC | 614 | 618 | 3,740 | 4,969 | 1,111 | 1,156 | 52 | 82 | 119 | 131 | 8,431 | 6,608 | 14,067 | 13,564 | 27,631 |
| Halifax CC | 12 | 19 | 1,318 | 1,479 | 30 | 23 | 44 | 83 | 2 | 4 | 1,681 | 1,131 | 3,087 | 2,739 | 5,826 |
| Haywood CC | 8 | 5 | 49 | 25 | 66 | 58 | 23 | 15 | 11 | 6 | 2,104 | 1,710 | 2,261 | 1,819 | 4,080 |
| Isothermal CC | 7 | 19 | 377 | 378 | 150 | 140 | 6 | 4 | 10 | 14 | 3,247 | 3,350 | 3,797 | 3,905 | 7,702 |
| James Sprunt CC | 25 | 13 | 1,125 | 1,258 | 408 | 268 | 26 | 27 | 9 | 25 | 2,421 | 1,732 | 4,014 | 3,323 | 7,337 |
| Johnston CC | 33 | 23 | 751 | 955 | 396 | 428 | 37 | 22 | 337 | 259 | 3,597 | 2,699 | 5,151 | 4,386 | 9,537 |
| Lenoir CC | 38 | 20 | 1,900 | 1,949 | 436 | 307 | 43 | 27 | 32 | 25 | 3,297 | 2,281 | 5,746 | 4,609 | 10,355 |
| Martin CC | 6 | 4 | 610 | 932 | 40 | 54 | 14 | 11 | 10 | 5 | 920 | 809 | 1,600 | 1,815 | 3,415 |
| Mayland CC | 16 | 2 | 412 | 14 | 165 | 117 | 37 | 7 | 15 | 1 | 2,870 | 1,854 | 3,515 | 1,995 | 5,510 |



North Carolina Community College System

Continuing Education Student Information

Student Enrollment by Race and Gender by College (Unduplicated Headcount)

ANNTBL9

Reporting Year: 2006-2007

Last Refresh on : 10/16/2007

| | Asian Male | Asian Female | Black Male | Black Female | Hispanic Male | Hispanic Female | Indian (American) Male | Indian (American) Female | Other Male | Other Female | White Male | White Female | Male Total | Female Total | Grand Total |
|----------------------|---------------|-----------------|---------------|-----------------|------------------|--------------------|------------------------------|--------------------------------|---------------|-----------------|----------------|-----------------|----------------|-----------------|----------------|
| McDowell TCC | 53 | 56 | 207 | 130 | 146 | 76 | 30 | 12 | 2 | 1 | 3,898 | 2,391 | 4,336 | 2,666 | 7,002 |
| Mitchell CC | 61 | 88 | 458 | 811 | 353 | 394 | 14 | 12 | 22 | 32 | 3,001 | 3,268 | 3,909 | 4,605 | 8,514 |
| Montgomery CC | 6 | 15 | 173 | 348 | 159 | 140 | 18 | 23 | 1 | | 1,140 | 929 | 1,497 | 1,455 | 2,952 |
| Nash CC | 23 | 15 | 1,348 | 1,671 | 213 | 234 | 44 | 51 | 56 | 44 | 2,602 | 1,585 | 4,286 | 3,600 | 7,886 |
| Pamlico CC | 3 | 3 | 262 | 106 | 35 | 4 | 8 | 1 | 7 | 5 | 503 | 457 | 818 | 576 | 1,394 |
| Piedmont CC | 9 | 6 | 1,190 | 932 | 100 | 43 | 19 | 7 | 23 | 12 | 2,027 | 967 | 3,368 | 1,967 | 5,335 |
| Pitt CC | 57 | 97 | 1,961 | 2,480 | 359 | 314 | 21 | 13 | 101 | 107 | 3,729 | 2,453 | 6,228 | 5,464 | 11,692 |
| Randolph CC | 34 | 35 | 362 | 276 | 337 | 421 | 20 | 10 | 29 | 16 | 3,798 | 3,133 | 4,580 | 3,891 | 8,471 |
| Richmond CC | 20 | 18 | 1,229 | 954 | 334 | 145 | 247 | 215 | 25 | 3 | 1,486 | 1,090 | 3,341 | 2,425 | 5,766 |
| Roanoke-Chowan CC | 2 | 3 | 508 | 798 | 37 | 7 | 6 | 10 | 8 | 5 | 736 | 577 | 1,297 | 1,400 | 2,697 |
| Robeson CC | 24 | 18 | 1,662 | 1,585 | 355 | 170 | 1,586 | 2,031 | 107 | 62 | 2,386 | 1,461 | 6,120 | 5,327 | 11,447 |
| Rockingham CC | 16 | 16 | 602 | 920 | 190 | 152 | 23 | 24 | 14 | 19 | 3,204 | 2,960 | 4,049 | 4,091 | 8,140 |
| Rowan-Cabarrus CC | 70 | 65 | 1,348 | 1,313 | 567 | 614 | 51 | 31 | 288 | 244 | 5,470 | 3,698 | 7,794 | 5,965 | 13,759 |
| Sampson CC | 12 | 7 | 869 | 905 | 470 | 319 | 58 | 65 | 23 | 13 | 1,885 | 1,345 | 3,317 | 2,654 | 5,971 |
| Sandhills CC | 8 | 31 | 767 | 794 | 226 | 218 | 146 | 142 | 40 | 33 | 2,650 | 2,275 | 3,837 | 3,493 | 7,330 |
| Southeastern CC | 5 | 15 | 998 | 1,372 | 142 | 94 | 190 | 237 | 35 | 15 | 2,535 | 2,588 | 3,905 | 4,321 | 8,226 |
| South Piedmont CC | 30 | 25 | 1,018 | 1,000 | 566 | 508 | 31 | 16 | 140 | 85 | 2,167 | 1,645 | 3,952 | 3,279 | 7,231 |
| Southwestern CC | 24 | 11 | 480 | 176 | 232 | 187 | 185 | 186 | 5 | 3 | 2,643 | 1,700 | 3,569 | 2,263 | 5,832 |
| Stanly CC | 63 | 54 | 420 | 458 | 184 | 108 | 32 | 17 | 34 | 17 | 2,195 | 1,756 | 2,928 | 2,410 | 5,338 |
| Surry CC | 13 | 20 | 262 | 152 | 213 | 247 | 14 | 14 | 8 | 1 | 4,496 | 3,568 | 5,006 | 4,002 | 9,008 |
| Tri-County CC | 4 | 4 | 15 | 16 | 40 | 49 | 27 | 26 | 1 | 2 | 1,577 | 1,724 | 1,664 | 1,821 | 3,485 |
| Vance-Granville CC | 38 | 29 | 2,978 | 2,575 | 191 | 126 | 83 | 56 | 368 | 192 | 3,410 | 2,567 | 7,068 | 5,545 | 12,613 |
| Wake TCC | 693 | 877 | 4,811 | 5,827 | 2,377 | 2,319 | 130 | 125 | 1,307 | 1,296 | 11,250 | 9,185 | 20,568 | 19,629 | 40,197 |
| Wayne CC | 46 | 82 | 1,598 | 1,796 | 401 | 305 | 57 | 30 | 41 | 54 | 3,049 | 1,892 | 5,192 | 4,159 | 9,351 |
| Western Piedmont CC | 80 | 76 | 1,287 | 271 | 423 | 149 | 54 | 10 | 51 | 21 | 5,571 | 2,960 | 7,466 | 3,487 | 10,953 |
| Wilkes CC | 16 | 23 | 354 | 247 | 282 | 233 | 12 | 13 | 14 | 14 | 5,301 | 4,297 | 5,979 | 4,827 | 10,806 |
| Wilson CC | 22 | 32 | 1,597 | 1,498 | 316 | 290 | 24 | 16 | 38 | 26 | 2,949 | 1,532 | 4,946 | 3,394 | 8,340 |
| NCCCS Totals: | 4,582 | 5,388 | 64,645 | 73,245 | 24,886 | 23,241 | 4,262 | 4,458 | 6,009 | 5,669 | 196,210 | 166,627 | 300,594 | 278,628 | 579,222 |

North Carolina Community College System
Curriculum Student Information II
Unduplicated Curriculum Student Enrollment by Age, Program and Gender

CC101M - II

Reporting Year: 2006-2007

Last Refresh on : 4/11/2008

Wake TCC

| Age | Associate Female | Associate Male | Certificate Female | Certificate Male | Diploma Female | Diploma Male | Transitional Female | Transitional Male | Total Female | Total Male | Total Enrollment |
|----------------|---------------------|-------------------|-----------------------|---------------------|-------------------|-----------------|------------------------|----------------------|-----------------|---------------|---------------------|
| 16 & Under | | | | | | | 66 | 34 | 66 | 34 | 100 |
| 17 | 1 | 4 | | | | | 24 | 23 | 25 | 27 | 52 |
| 18 | 54 | 33 | 2 | 1 | | 2 | 91 | 53 | 147 | 89 | 236 |
| 19 | 544 | 500 | 8 | 10 | 2 | 7 | 151 | 71 | 705 | 588 | 1,293 |
| 20 | 704 | 822 | 8 | 16 | 9 | 24 | 134 | 73 | 855 | 935 | 1,790 |
| 21 | 653 | 728 | 10 | 16 | 16 | 19 | 120 | 56 | 799 | 819 | 1,618 |
| 22 | 605 | 545 | 9 | 11 | 19 | 10 | 80 | 56 | 713 | 622 | 1,335 |
| 23 | 432 | 423 | 17 | 18 | 16 | 7 | 68 | 54 | 533 | 502 | 1,035 |
| 24 | 344 | 366 | 19 | 20 | 14 | 7 | 55 | 34 | 432 | 427 | 859 |
| 25-29 | 1,344 | 1,100 | 74 | 65 | 52 | 28 | 202 | 123 | 1,672 | 1,316 | 2,988 |
| 30-34 | 881 | 586 | 64 | 74 | 57 | 19 | 147 | 78 | 1,149 | 757 | 1,906 |
| 35-39 | 725 | 389 | 59 | 56 | 41 | 11 | 105 | 69 | 930 | 525 | 1,455 |
| 40-44 | 458 | 198 | 69 | 58 | 26 | 13 | 74 | 39 | 627 | 308 | 935 |
| 45-49 | 382 | 153 | 58 | 44 | 23 | 6 | 89 | 48 | 552 | 251 | 803 |
| 50-54 | 158 | 78 | 25 | 21 | 21 | 6 | 49 | 29 | 253 | 134 | 387 |
| 55-59 | 67 | 28 | 20 | 21 | 7 | 2 | 25 | 18 | 119 | 69 | 188 |
| 60-64 | 23 | 16 | 6 | 7 | 2 | 2 | 15 | 21 | 46 | 46 | 92 |
| 65-69 | 4 | 4 | 2 | 3 | 1 | 1 | 2 | 3 | 9 | 11 | 20 |
| 70 & Up | | 1 | 1 | 1 | | | | 6 | 1 | 8 | 9 |
| Totals: | 7,379 | 5,974 | 451 | 442 | 306 | 164 | 1,497 | 888 | 9,633 | 7,468 | 17,101 |

**North Carolina Community College System
Course FTE Information System
Curriculum Two Semester Annualized FTE
Ranked by Annual FTE
ANNTBL29
Fall 2006 -Spring 2007**

| Rank | Colleges | Fall | Spring | 2006-2007 Annual FTE | 2005-2006 Annual FTE | 2004-2005 Annual FTE |
|------|--------------------------|-------|--------|-------------------------|-------------------------|-------------------------|
| 1 | Central Piedmont CC | 5,275 | 5,572 | 10,847 | 10,352 | 10,109 |
| 2 | Wake TCC | 4,187 | 4,066 | 8,253 | 8,198 | 7,831 |
| 3 | Fayetteville TCC | 3,876 | 3,903 | 7,778 | 7,698 | 7,537 |
| 4 | Guilford TCC | 3,800 | 3,570 | 7,370 | 6,976 | 6,791 |
| 5 | Cape Fear CC | 2,906 | 2,611 | 5,518 | 5,592 | 5,399 |
| 6 | Pitt CC | 2,494 | 2,419 | 4,913 | 4,874 | 4,785 |
| 7 | Forsyth TCC | 2,500 | 2,404 | 4,905 | 4,968 | 4,951 |
| 8 | Asheville-Buncombe TCC | 2,368 | 2,164 | 4,532 | 4,623 | 4,437 |
| 9 | Gaston College | 1,845 | 1,866 | 3,710 | 3,919 | 3,781 |
| 10 | Catawba Valley CC | 1,867 | 1,776 | 3,643 | 3,691 | 3,660 |
| 11 | Rowan-Cabarrus CC | 1,854 | 1,757 | 3,611 | 3,765 | 4,188 |
| 12 | Central Carolina CC | 1,875 | 1,720 | 3,595 | 3,558 | 3,597 |
| 13 | Durham TCC | 1,613 | 1,617 | 3,229 | 3,355 | 3,460 |
| 14 | Alamance CC | 1,655 | 1,535 | 3,190 | 3,119 | 3,109 |
| 15 | Coastal Carolina CC | 1,568 | 1,550 | 3,119 | 3,147 | 3,196 |
| 16 | Johnston CC | 1,597 | 1,519 | 3,116 | 3,102 | 2,947 |
| 17 | Vance-Granville CC | 1,504 | 1,547 | 3,051 | 3,094 | 3,307 |
| 18 | Caldwell CC & TI | 1,516 | 1,455 | 2,971 | 2,932 | 2,893 |
| 19 | Sandhills CC | 1,463 | 1,462 | 2,924 | 2,922 | 2,864 |
| 20 | Cleveland CC | 1,299 | 1,236 | 2,534 | 2,341 | 2,207 |
| 21 | Wayne CC | 1,319 | 1,198 | 2,518 | 2,515 | 2,565 |
| 22 | Davidson County CC | 1,205 | 1,173 | 2,378 | 2,343 | 2,534 |
| 23 | Surry CC | 1,147 | 1,098 | 2,244 | 2,219 | 2,408 |
| 24 | Craven CC | 1,077 | 1,033 | 2,110 | 2,090 | 2,114 |
| 25 | Western Piedmont CC | 1,069 | 1,040 | 2,109 | 2,078 | 2,119 |
| 26 | Piedmont CC | 1,028 | 1,055 | 2,083 | 2,058 | 1,953 |
| 27 | Lenoir CC | 1,025 | 1,052 | 2,077 | 2,227 | 2,143 |
| 28 | Robeson CC | 1,023 | 968 | 1,992 | 1,893 | 1,881 |
| 29 | Wilkes CC | 974 | 957 | 1,931 | 2,019 | 2,037 |
| 30 | Nash CC | 969 | 941 | 1,910 | 1,684 | 1,687 |
| 31 | Mitchell CC | 911 | 843 | 1,754 | 1,674 | 1,692 |
| 32 | Southeastern CC | 858 | 891 | 1,750 | 1,660 | 1,829 |
| 33 | Stanly CC | 860 | 874 | 1,734 | 1,496 | 1,565 |
| 34 | Edgecombe CC | 881 | 846 | 1,727 | 1,776 | 1,813 |
| 35 | Isothermal CC | 850 | 821 | 1,672 | 1,724 | 1,681 |
| 36 | College of The Albemarle | 820 | 832 | 1,652 | 1,578 | 1,589 |

North Carolina Community College System
Course FTE Information System
Curriculum Two Semester Annualized FTE
Ranked by Annual FTE
ANNTBL29
Fall 2006 -Spring 2007

| Rank | Colleges | Fall | Spring | 2006-2007 Annual FTE | 2005-2006 Annual FTE | 2004-2005 Annual FTE |
|------|------------------------|---------------|---------------|-------------------------|-------------------------|-------------------------|
| 37 | Randolph CC | 836 | 780 | 1,616 | 1,637 | 1,686 |
| 38 | Haywood CC | 829 | 773 | 1,601 | 1,562 | 1,516 |
| 39 | Rockingham CC | 809 | 776 | 1,586 | 1,553 | 1,584 |
| 40 | Southwestern CC | 786 | 773 | 1,559 | 1,518 | 1,588 |
| 41 | South Piedmont CC | 748 | 738 | 1,486 | 1,453 | 1,402 |
| 42 | Wilson CC | 715 | 728 | 1,443 | 1,536 | 1,561 |
| 43 | Blue Ridge CC | 761 | 676 | 1,436 | 1,551 | 1,556 |
| 44 | Carteret CC | 648 | 634 | 1,282 | 1,227 | 1,321 |
| 45 | Richmond CC | 623 | 616 | 1,239 | 1,163 | 1,289 |
| 46 | Mayland CC | 630 | 599 | 1,229 | 1,185 | 1,120 |
| 47 | Beaufort County CC | 616 | 599 | 1,215 | 1,217 | 1,315 |
| 48 | Halifax CC | 627 | 572 | 1,199 | 1,307 | 1,443 |
| 49 | Bladen CC | 584 | 559 | 1,143 | 1,189 | 1,141 |
| 50 | Sampson CC | 567 | 491 | 1,058 | 1,076 | 1,097 |
| 51 | James Sprunt CC | 516 | 471 | 988 | 1,107 | 1,083 |
| 52 | McDowell TCC | 510 | 449 | 959 | 1,023 | 996 |
| 53 | Brunswick CC | 472 | 468 | 939 | 841 | 837 |
| 54 | Montgomery CC | 380 | 371 | 750 | 684 | 636 |
| 55 | Tri-County CC | 367 | 372 | 738 | 796 | 817 |
| 56 | Roanoke-Chowan CC | 375 | 345 | 721 | 758 | 777 |
| 57 | Martin CC | 324 | 279 | 603 | 782 | 767 |
| 58 | Pamlico CC | 184 | 184 | 368 | 313 | 328 |
| | Total 2006-2007 | 75,982 | 73,625 | 149,607 | 0 | 0 |
| | Total 2005-2006 | 76,098 | 72,637 | 0 | 148,736 | 0 |
| | Total 2004-2005 | 75,752 | 72,771 | 0 | 0 | 148,523 |