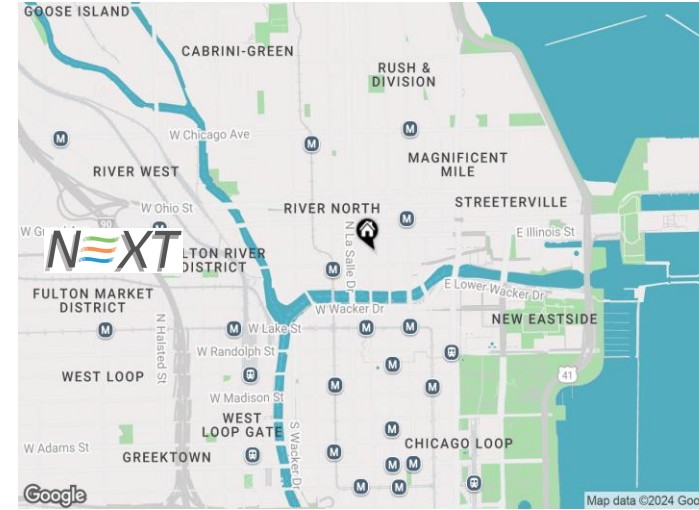


CLIENT

NEXT is a global **creative** advertising agency with a new office opening in Chicago. The company continues to build upon its legacy of **innovating** at the intersection of advertising, digital and brand strategy. **NEXT's** key mission is to leverage **creativity** through their work to **influence** change and **impact** culture. The Chicago office will be a destination that will enhance **collaboration** with teammates across all their offices and be a place they will be **proud** to invite their clients.

The three 'currents' in the **NEXT** logo represent the three major rivers that intersect in Chicago and are the hub of **dynamic** movement and **change**. **NEXT** is this hub of **renewal** in the post-pandemic workplace.



CONCEPT

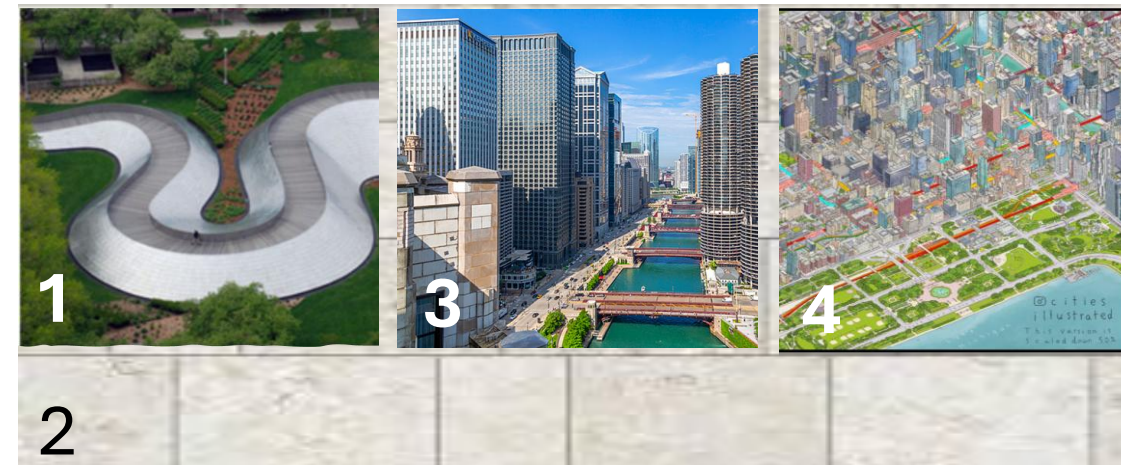


The **energy** and **dynamic** nature of the Chicago waterways, and their **evolution** from the industrial background of Chicago into a **thriving, nourishing** force throughout the city that irresistibly draws people is the inspiration for the new **NEXT** office.

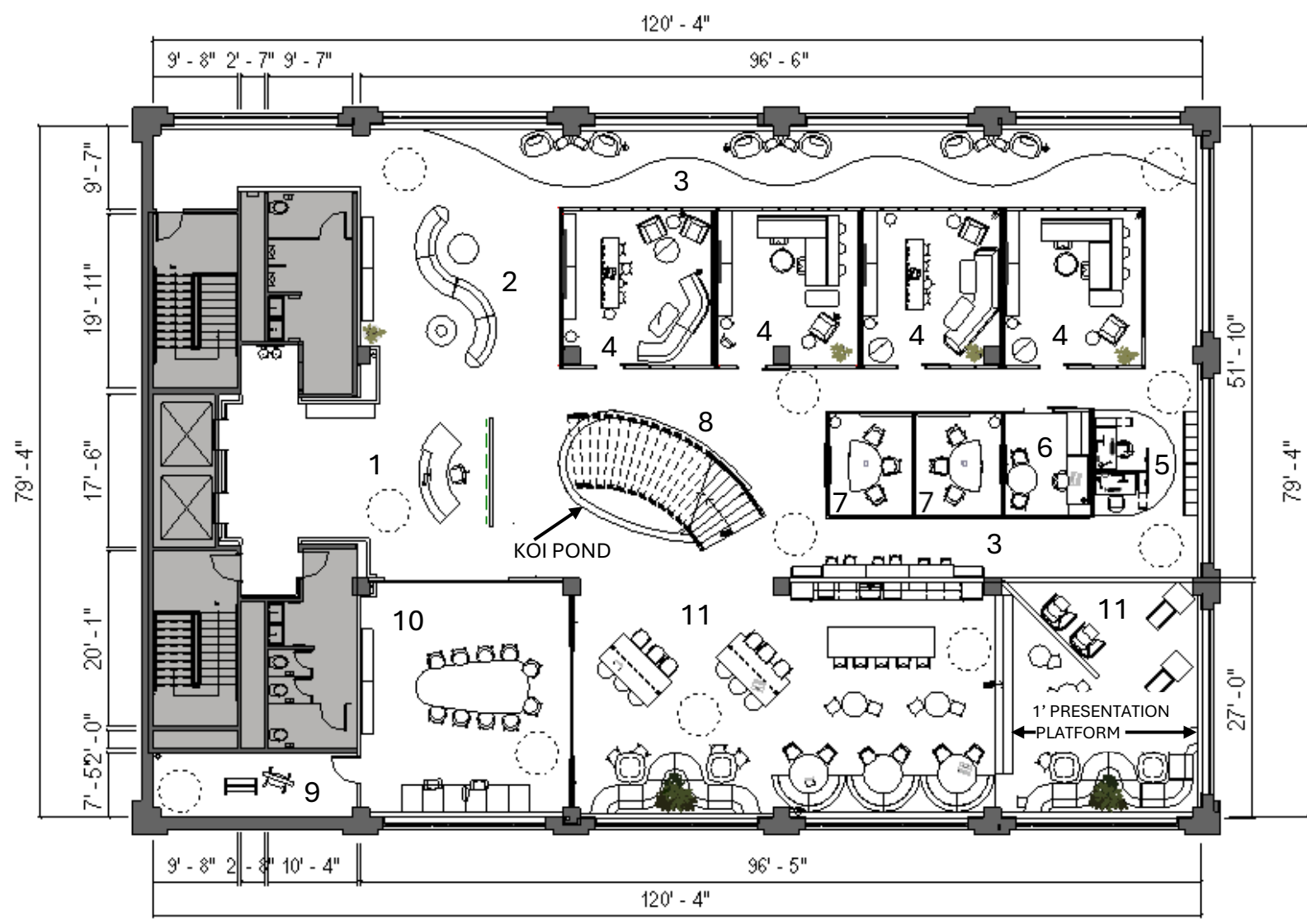
This 'workplace of the future' will be a **dynamic** destination, drawing **creative** talent, like a magnet, to a physical place, post-pandemic. The office design will **support** the client's mission to harness **creativity** to **influence** change and **impact** culture. The working environment must enable the **NEXT** team to bring their **full selves** to serve their clients, as well as be a showcase where they are **proud** to invite them.

The Chicago office must meet the **rising expectations** of young and seasoned workers alike. Expectations include **choosing** how and where to work, in **beautiful, functional, comfortable** spaces and **belonging** to a community with a **shared purpose**. These design decisions will enable **NEXTers** and their clients' **opportunities** to excel, thrive and experience belonging.

INSPIRATION

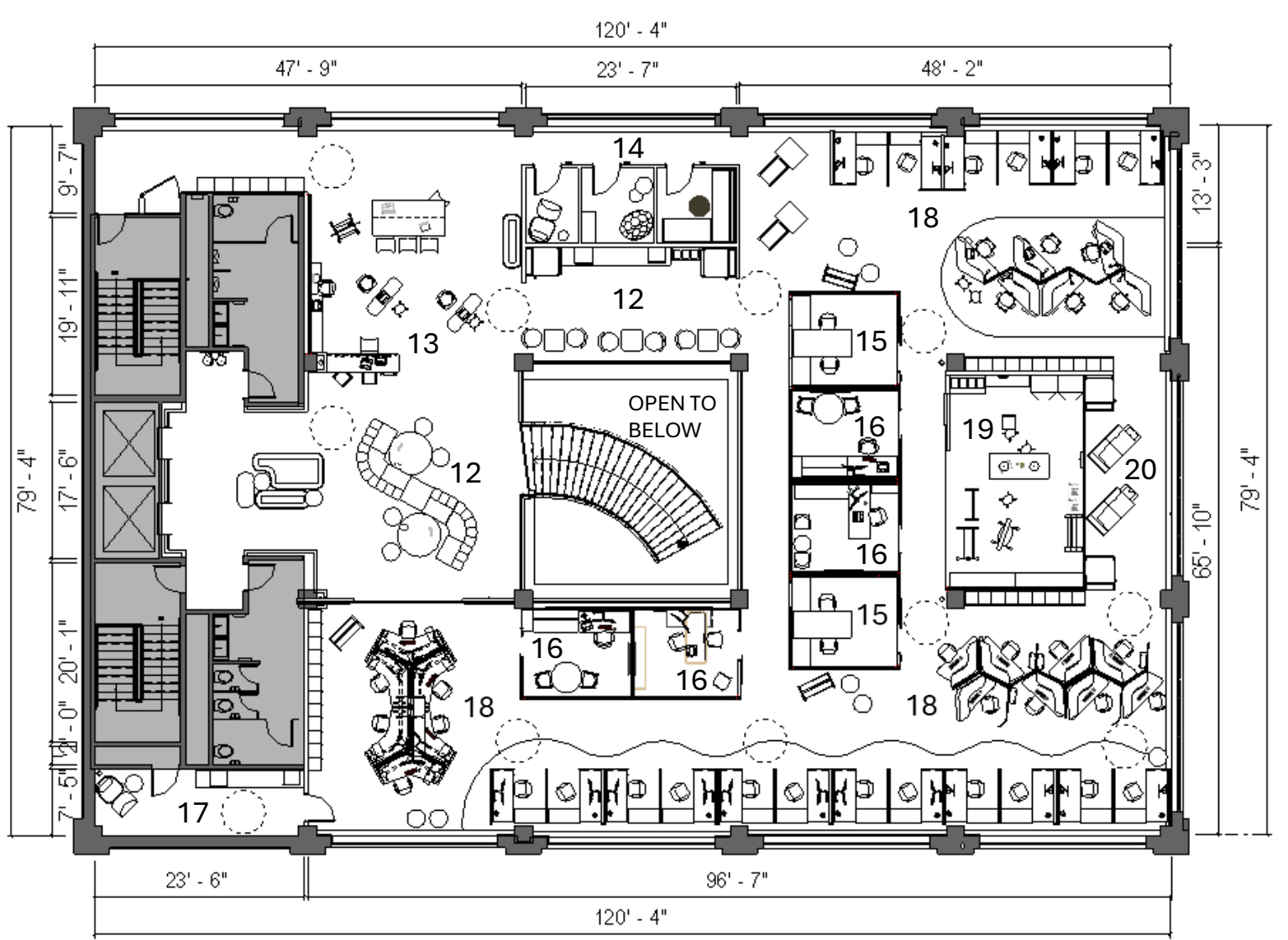
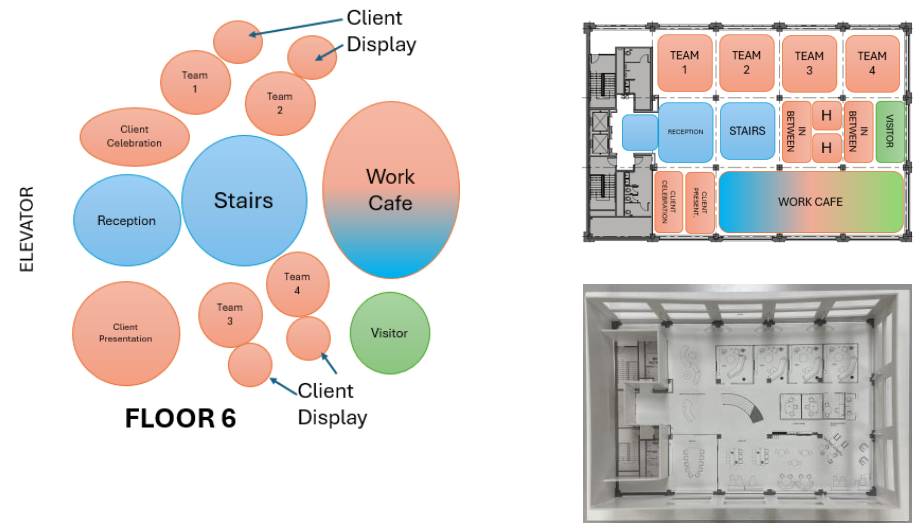


1. **Frank Gehry's Pedestrian Bridge** represents the river—design includes a central **curved** monumental staircase with stainless steel as a nod to this bridge.
2. **Chicago limestone**—early settlers dug through limestone with picks and shovels to 'engineer' the rivers. Limestone is used to clad walls and columns in the **NEXT** design.
3. **Chicago's Great Rivers** are the **lifeblood** of the region; the city's history has been entwined with them, surrounded by **vibrant** communities. Rounded forms that **curve** and **move** are introduced throughout furnishings and materials to define space and circulation.
4. **George Tanager's** artist rendering of Chicago—the colorways in this piece are the **joyful** color story in this design!



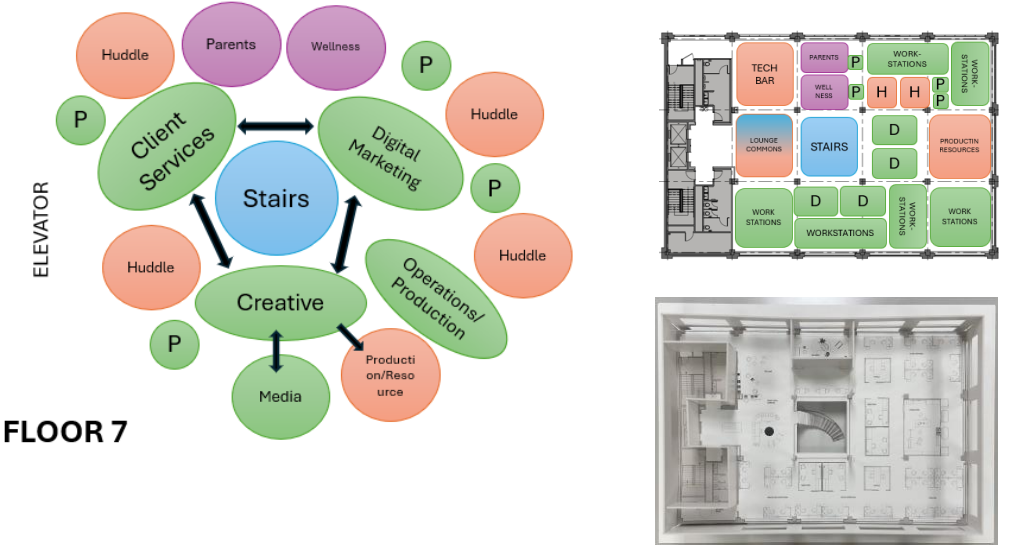
FLOOR 6
SCALE 1/8"=1'

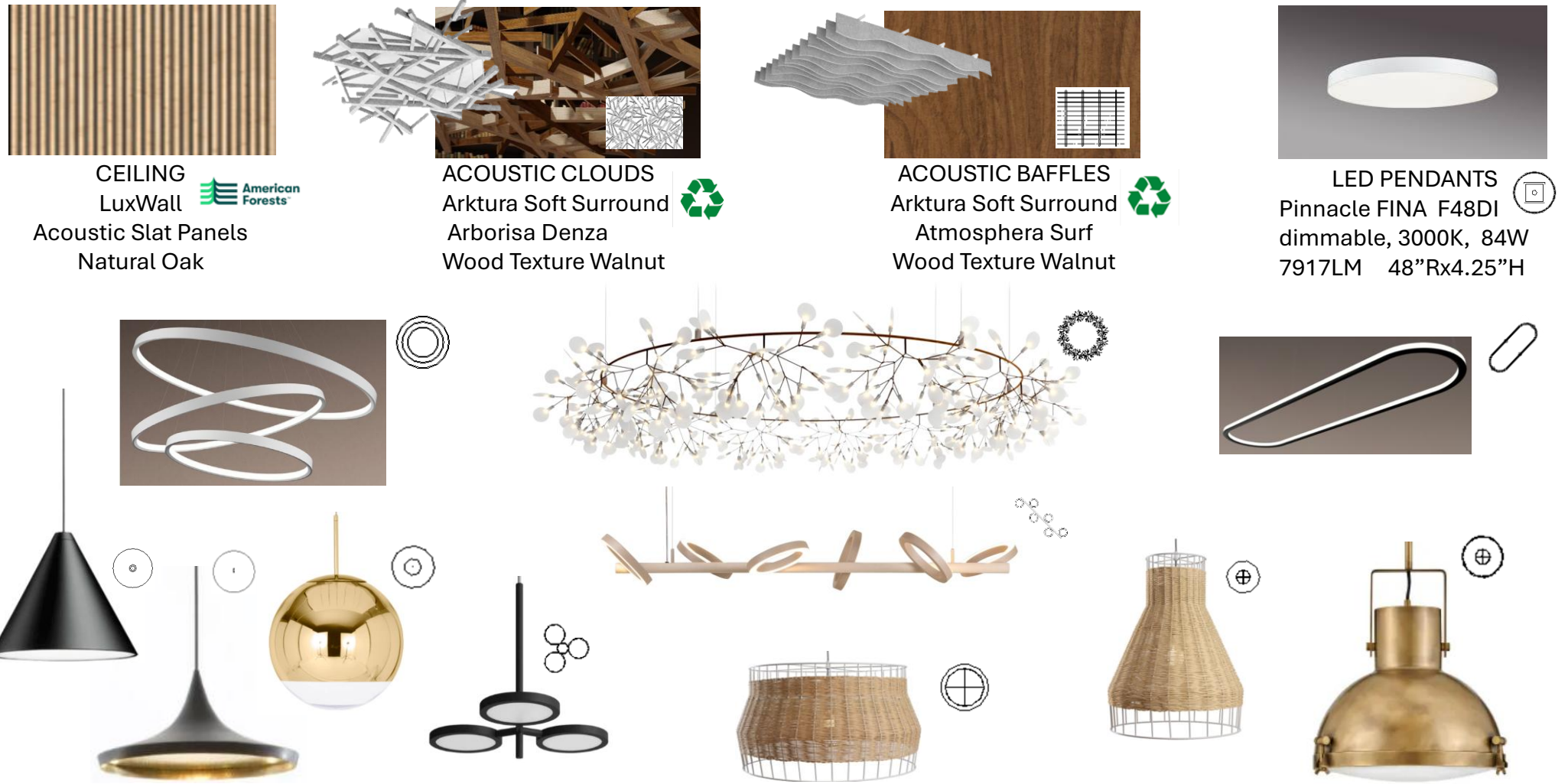
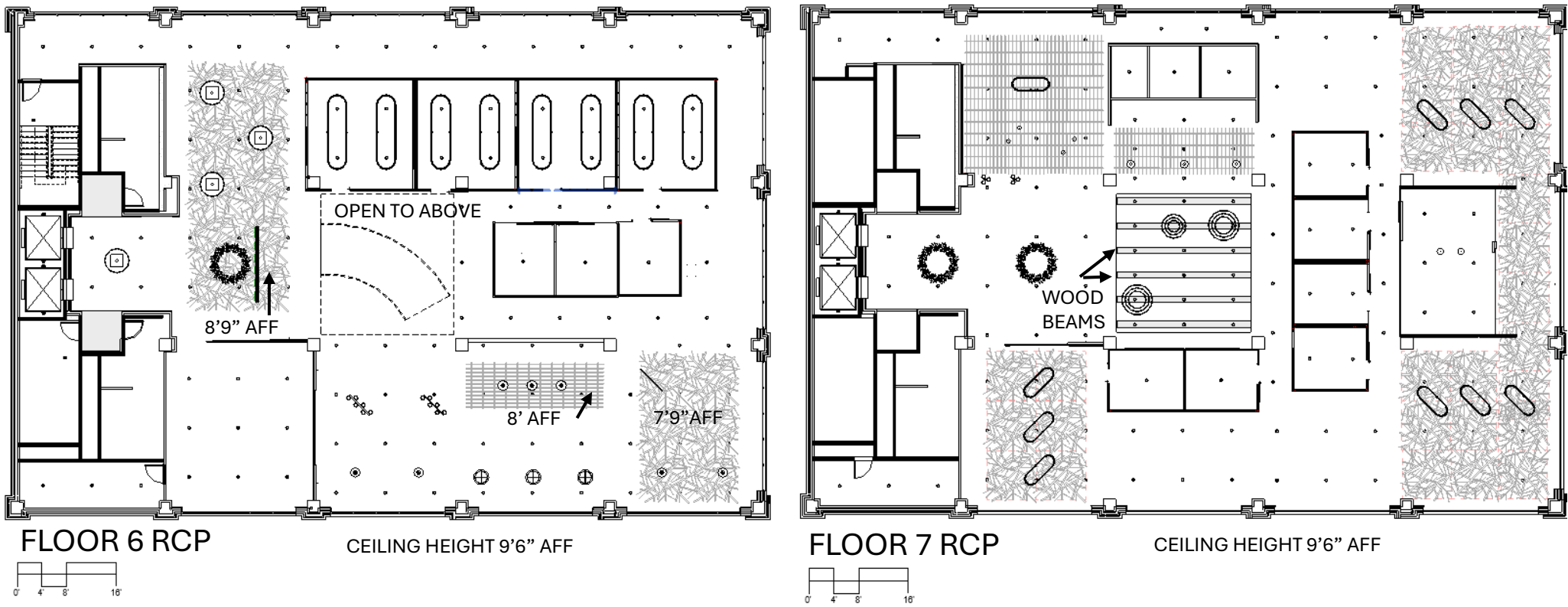
- KEY
- 1 RECEPTION
 - 2 CLIENT CELEBRATION
 - 3 IN-BETWEEN SPACE
 - 4 TEAM MEETING ROOMS WITH CLIENT DISPLAY WALLS
 - 5 VISITOR WORKSTATIONS
 - 6 PRIVATE OFFICE
 - 7 HUDDLE ROOMS
 - 8 MONUMENTAL STAIRCASE
 - 9 STORAGE
 - 10 CLIENT PRESENTATION ROOM
 - 11 WORK CAFE



FLOOR 7
SCALE 1/8"=1'

- KEY
- 12 FRONT PORCH COMMONS
 - 13 TECH BAR
 - 14 WELLNESS SPACES
 - 15 HUDDLE ROOMS
 - 16 PRIVATE OFFICES
 - 17 PARENTS ROOM
 - 18 WORKSTATIONS
 - 19 PRODUCTION AND RESOURCE CENTER
 - 20 IN-BETWEEN SPACE





DESCRIP- TION`	SYM- BOL	SPECIFICATIONS	FINISH
Reception/ Lounge Commons Chandelier		Moooi Heracleum III LED, dimmable M13HERACLEUM4, 2600K, CRI 91 82"Wx82"Dx13.8"H 84W/8427LM	Copper
Offices/Tech Bar/Worksta- tion Pendant		Lumenwerx ELIA Oval LED, Dimmable 3000K,90CRI 2'Wx2"Dx6'L 9100LM 3'Wx2"Dx12'L 17400LM	Black
Monumental Staircase Pendant		Lumenwerx Rim Multiple Rings, LED, Dimmable 3000K,90CRI, Watts vary 2/3/4 Rings 24", 36", 48" 13500 LM 3/4/5 Rings 36". 48", 60" 18000 LM	Alumi- num
Work Café Entrance Table Pendant		Moooi Pallana LED Linear Suspension M13PALLANA, 3000K, 58W/3800LM 60"Wx3.7"Dx19"H	Pebble
Work Café Booth Table Pendant		BluDot Laika Pendant Medium Plus LED 19"Rx24"H	Rattan
Work Café Booth Pendant		BluDot Laika Pendant Large LED 30"Rx16"H	Rattan
Work Café Island Pendant		Hinkley Lighting Nautique Pendant 49065HB 18"Rx19"H LED Bulb 1-12W	Heritage Brass
Lounge Commons Pendant		Tom Dixon Mirror Ball Pendants MBB40G-PUSM3 LED dimmable, 6W/800LM, 90+ CRI 15.7"R 3000K	Polished Gold
Production/ Resource Center Pendant		Tom Dixon Wide Beat Pendant BLS01-PUSM5 LED Dimmable, 7.5W/800LM, 94 CRI 14.2"Rx6.3"H 3000K	Matte Black/ Brass
Tech Bar Pendant		BluDot Shine On Large Black LED Pendant BDISI1LRGPEN dimmable 3000K 20"Wx20"Dx16"H 34W/2850LM	Black
Tech Bar Pendant		Flos String Light Cone LED, dimmable FLSF6481030 21W 2700K 7.5"Rx6.3"H	Matte Black



RECEPTION



FLOORING
Polyflor LVT 9051
Reclaimed Ink Oak



WALLS
StoneSheets
Light Spanish
Limestone



CEILING
LuxWall
Acoustic Slat Panels
Natural Oak



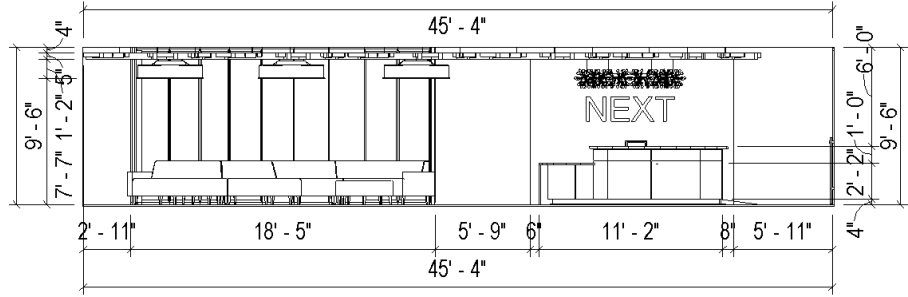
ACOUSTIC CLOUDS
Arktura Soft Surround
Arborisa Denza
Wood Texture Walnut



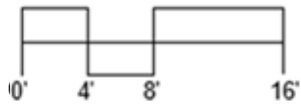
FEATURE WALL
Custom Living
Plant Wall



ENTRY AREA RUG
Moooi 'In the Meadow'
Wool 9'9" x 13'

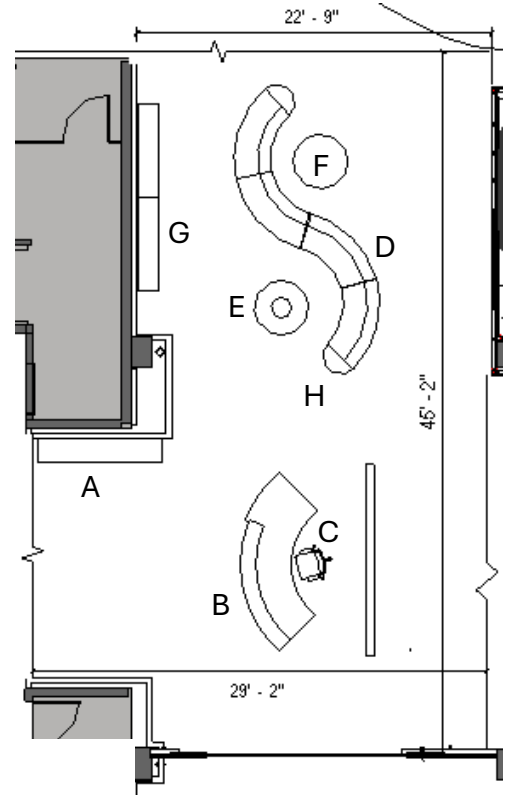


RECEPTION ELEVATION
SCALE 1/4"=1'

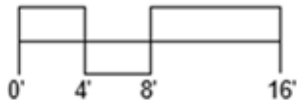


Clients and team members experience **hospitality** as they enter the *NEXT* office and are embraced by **welcoming** colors and shapes. The living wall, whimsical lighting and colors stimulate a **creative and joyful mindset**.

The forms and curves, as well as the limestone wall, are subtle signs of the rivers.



RECEPTION PLAN
SCALE 1/4"=1'



DESCRIPTION	KEY	SPECIFICATIONS	SWATCH
Ripple Upholstered Wave Bench	A	Coalesse/Steelcase 490-B35VRT 5H17 Mallard 97"W X 19" D X 19.25"H	
Custom Reception Counter	B	Strong Project Office Furniture Brushed Copper Base Laminate Counter Artic White 11'4" W X 3'D X 3'6"H	
Office Chair	C	AMQ/Steelcase SIYA001 White/Polished Aluminum Base Cushion 5023 Wasabi 27"W X 27"D X 41"-45"H	
Circa Lounge system	D	Coalesse/Steelcase Circa 451R Back 5023 Wasabi Seat 5S28 Root beer 71"W X 28"D X 29.5"H	
Circa Round Table	E	Coalesse/Steelcase 45-T42RD 4024 Teak Veneer 42"W X 42"D X 15.75"H	
Circa Round Upholstered Ottoman	F	Coalesse/Steelcase 451-B42RD Elmsoft Leather, Garnet 42"W X 42"D X 17"H	
Storage Cabinet	G	Elective Elements/Steelcase 4 Door E6OS157222H 72"W X 16"W X 22"H	
Circa End Table	H	Coalesse/Steelcase 45-T28HER 402F Teak 13"W X 2'4"D X 17"H	



A



D



F



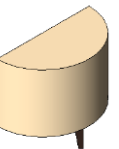
C



E



G



H

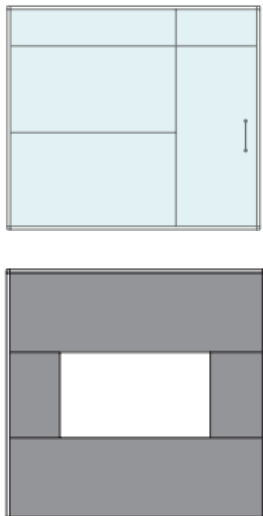


MONUMENTAL STAIRCASE

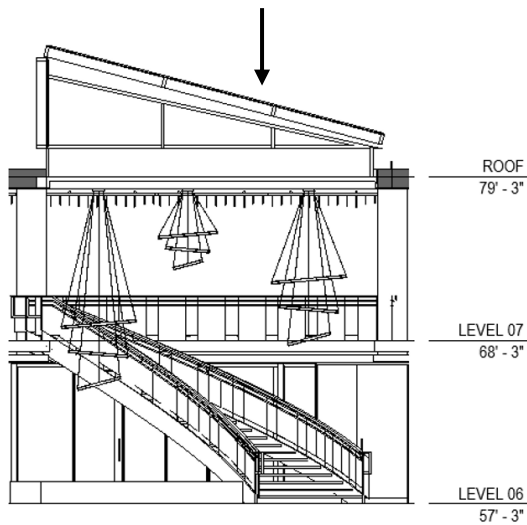


V.I.A. Architectural Solutions by Steelcase

Vertical Intelligent Architecture offers acoustical privacy and hosting technology. It provides design flexibility in a relocatable wall. Glass frames with interchangeable painted steel and whiteboard skins, as well as monitor shrouds and modular power enable constant adaptability to the evolving needs of the workplace.

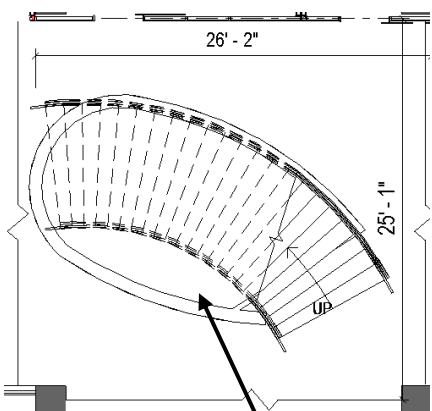
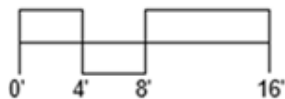


Large central skylight floods interior space with natural light



STAIR ELEVATION

SCALE 1/4"=1'




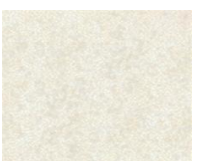
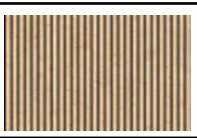



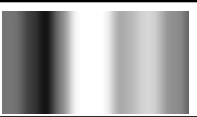

STAIR PLAN

SCALE 1/4"=1'



Koi Pond

MATERIALS SCHEDULE

DESCRIPTION	SPECIFICATIONS	FINISH
Flooring	PolyFloor LVT 9051 Reclaimed Ink Oak 8" x 60" Plank	
Column Wrap	StoneSheets Stone slim slab cladding Light Spanish Limestone 48"W X .35"D X 96"H	
Ceiling	LuxeWall Oak Acoustic Slat Panels—Natural 23.6"W x 7/8"Dx118"H	
Retaining Wall for Koi Pond	Landvision Designs Custom Stacked Stone	
Stair Treads	Woodwright Custom 55000 Walnut	
Railing	Woodwright Custom Red Birchwood	
Stringers	Polished Stainless Steel Custom	
Railing Glass Bottom	View Rail Glass	



The curving central staircase with its accompanying lively Koi pond speaks to the centrality of Chicago's waterways to the region. This is the central gathering place, the hub in the midst of NEXT's vibrant neighborhoods. The stainless-steel stringers are a nod to Frank Gehry's interpretation of the rivers. The generous skylight floods the interior of the office with natural light.



There is a **place** for everyone in this large, **inclusive**, **wifi enabled** work café. Opportunities for **collaboration**, **socialization**, **focus** work and a meal abound. Large company meetings are possible when the conference room sliding doors are opened. At the opposite end, a 12” platform enables speakers and programs to be seen **easily** by all. A **variety** of seating heights enable everyone to work in **comfort**. Tables and booths are powered.



FLOORING
Polyflor LVT 9051
Reclaimed Ink Oak

WALLS
StoneSheets
Light Spanish Limestone

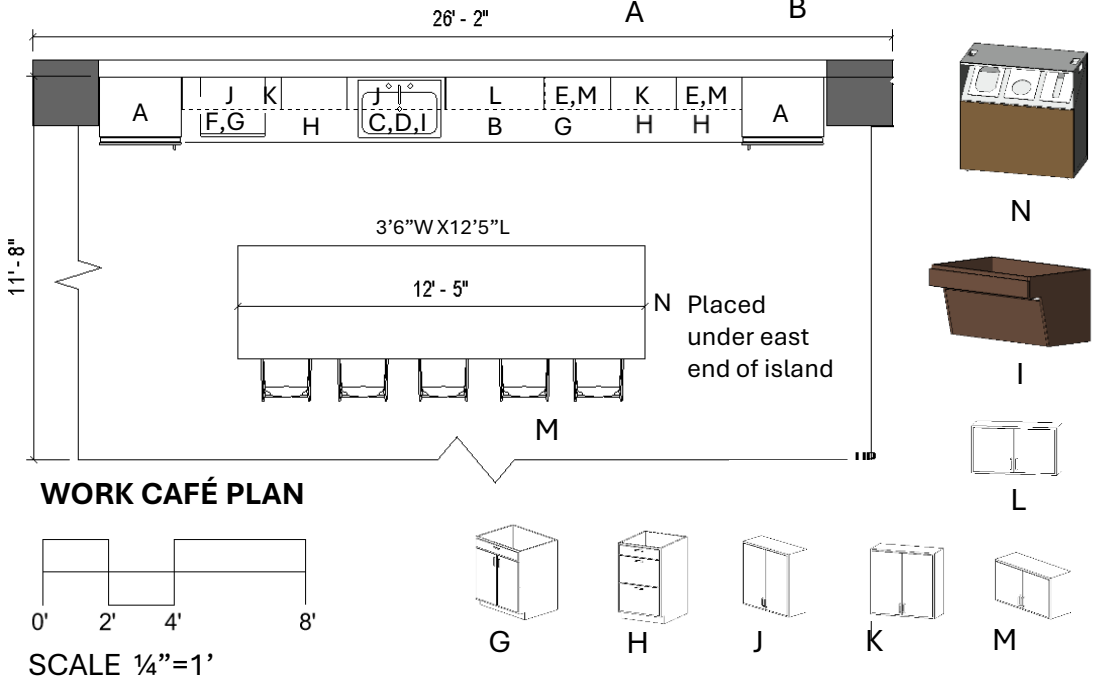
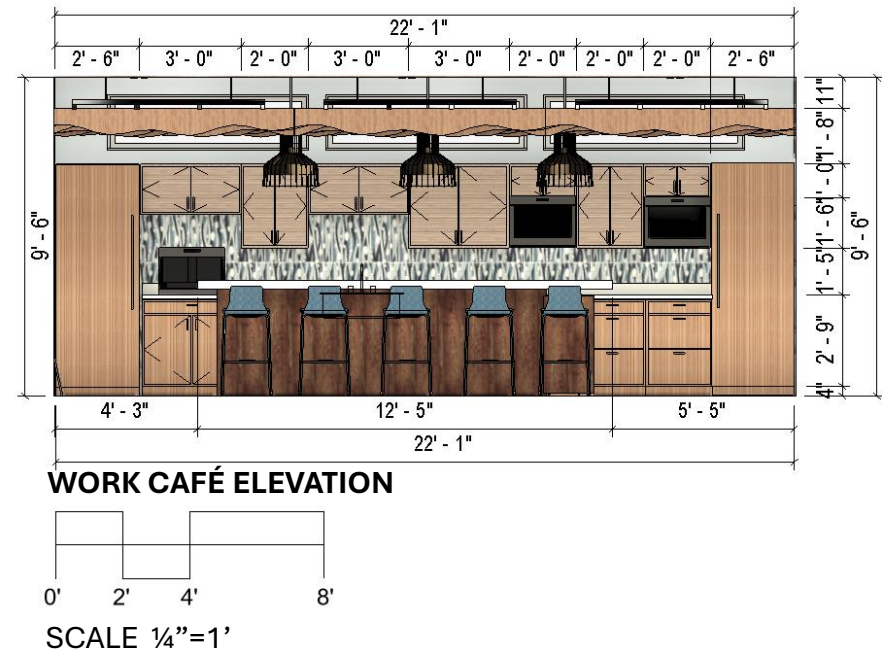
CEILING
LuxWall
Acoustic Slat Panels
Natural Oak

COUNTER
Cambria
Polished Quartz
Snowden White

BACKSPLASH
New Ravenna
Mosaic Tile
Biome Current

ISLAND BASE
Quadro Cabinets
Walnut Laminate

WALL PAINT
Steelcase
4B27 Satin
Blue Steel



DESCRIPTION	KEY	SPECIFICATIONS	FINISH
Refrigerator	A	Fisher and Paykel RS3084WRU1 15.87 cu ft Panel Ready 30"W X 24"D X 48"H	
Dishwasher Series 9	B	Fisher and Paykel Double Drawer DD24DHTI9N Panel Ready 23.5"W x 22.5"D x 34"H	
ADA Sink	C	Kohler Strive Undermount K-33158-NA Single Bowl 18 5/16"W x 6"D x 32"L Stainless	
ADA Faucet Kit	D	Kohler Triton Bowe 815T70-4AHA-CP Polished Chrome 11 3/4"H	
Microwave	E	Fisher and Paykel Series 7 OMD24SPX1 Professional 24"W x 24"D x 16"	
Coffee Maker	F	Fisher and Paykel Series 9 EB24DSXBB1 24"W x 19"D x 18"H	
Base Cabinet	G	Quadro Cabinets Frameless, Teak Laminate 2 Door, 1 Drawer 36"	
Base Cabinet	H	Quadro Cabinets Frameless, Teak Laminate 3 Drawers 24"	
ADA Sink Cabinet	I	Steelcase Folio Angled Front, Teak Laminate 36"	
Upper Cabinet	J	Quadro Cabinets Frameless, Laminate Natural Double Door 36"W x 12"D x 18"	
Upper Cabinet	K	Quadro Cabinets Frameless, Laminate Natural Double Door 24"W x 12"D x 30"	
Upper Cabinet	L	Quadro Cabinets Frameless, Laminate Natural Double Door 36"W x 12" Dx 30"	
Upper Cabinet	M	Quadro Cabinets Frameless, Laminate Natural Double Door 24"Wx12"Dx12"	
Mobile Recycling Cabinet	N	Steelcase Victor 2 Mobile 36"Wx18"Dx36"H	



Employees want to be able to work in a **variety** of positions and acoustic environments. The work café contains furnishings that **support** different work postures, including **privacy** work lounges and walk stations that encourage **movement**. A fireplace in a limestone clad wall provides **ambiance** during a cold Chicago winter, and the monitor above keeps employees **informed**.



Brody Privacy Lounge w/Power/Light
Steelcase 488WP
43"W x 37"D x 48.5"H

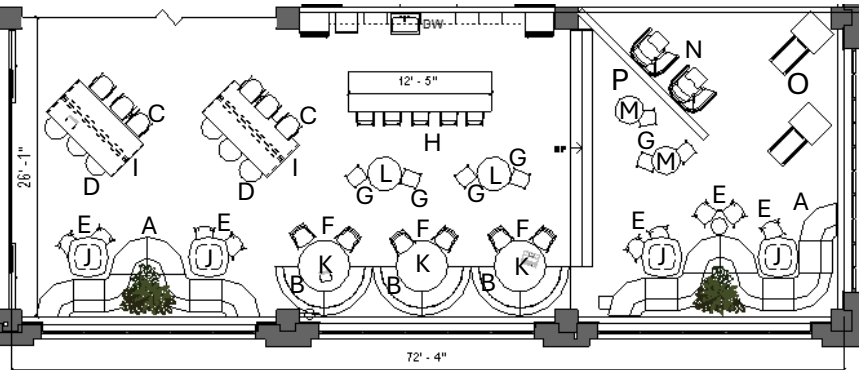
- Ergonomic Support
- Adjustable Workspace Holds Tech at Eye Level
- Controls Visual Distractions
- Transforms underutilized In-Between spaces



Built-In Linear Electric Fireplace
Dimplex
9'W x 5 7/8"D x 15"H



Ology Walkstation Height-Adjustable Desk
Steelcase OLWALK
34"W x 29"D x 40"H



WORK CAFÉ PLAN



DESCRIPTION	KEY	SPECIFICATIONS	SWATCH
Lounge System	A	Steelcase Campfire Serpentine 18-0013718 Inside &Outside Corner, Half Seat Taylor Sapphire/HUA19 Lemongrass	
Curved Banquette Seating	B	Orangebox/Steelcase Away from Desk AD52 Modular Circulate 9417 HUA19 Lemongrass	
Chair	C	Steelcase Noooi Stackable Cafeteria Chair WHG 6606, Citron 6332 22.9"Wx27.8"Dx33"H	
Mobile Upholstered Stool	D	Orangebox/Steelcase Sully OBSSULLY01 Taylor 3163-401 Sapphire 21"Wx21"Dx19"H	
Side Chair	E	Coalesse/Steelcase Wrapp COWRP4LEG RE07-Hazelnut/Chrome 25 1/4"Wx21"Dx29.5"H	
Side Chair	F	Coalesse/Steelcase LessThanFive COLT5 4234 Blue Matte 23.5"Wx20.5"Dx30"H	
Bar Stool	G	Orangebox/Steelcase OBCUBB13 Cubb w/Oak Base Fabric Round Trip Energy 18"Wx19"Dx39"H	
Bar Stool	H	Coalesse/Steelcase Montara650 Chrome Legs Taylor 3163-401 Sapphire 18.75"W x 19.5"D x 35.5"H	
Table	I	Steelcase Campfire Big Table TS4TLP28 Power Cut-Out 2575 Shiraz Cherry/2HBW Bisque 8'Wx4'Dx28"H	
Table	J	Coalesse/Steelcase Enea Lottus COFL3042 V10M Clear Maple 42"R x30"H	
Table	K L M	Coalesse/S.Case Montera 650 COSFZWTRD Shiraz 54"Rx28.5"H COSFZCTRD Wht 36"Rx42"H COSFZCTRD Wht 30"Rx42"	



This Tech hub enables **NEXT** to fulfill its commitment to **seamless technology integration and full hybrid support** for on-site and remote workers. Training and IT support provides **peace of mind** and keeps the hybrid workflow **efficient and productive**. The ability for associates to have their personal devices serviced is a valuable **amenity** and **perk** for working in the office.

The Tech Bar is located adjacent to the centrally located employee Front Porch Commons for **visibility** and **convenience**. **Training** occurs at the large back table.



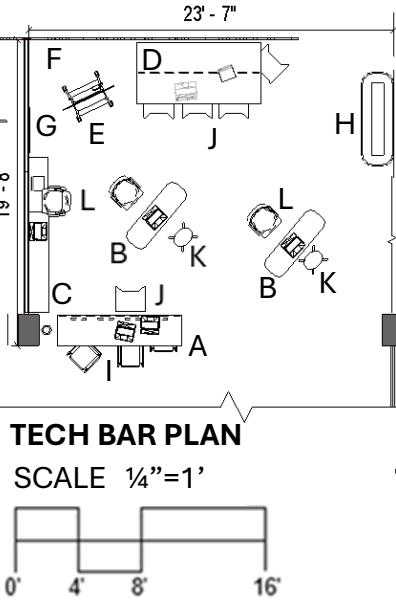
FLOORING
Polyflor LVT 9051
Reclaimed Ink Oak
BES 6001 Responsible Sourcing
GREENWELL
GREENWELL
GREENWELL

WALLS/COLUMNS
StoneSheets
Light Spanish Limestone

PAINT
Alkemis
Mineral Matte
Custom Color
GREENWELL
GREENWELL
INTERNATIONAL WELL-BUILDING INSTITUTE

CEILING
LuxWall
Acoustic Slat Panels
Natural Oak
American Forests

ACOUSTIC BAFFLES
Arktura Soft Surround
Atmospha Surf
Wood Texture Walnut
GREENWELL



DESCRIPTION	KEY	SPECIFICATIONS	SWATCH
Check-in Bar	A	Steelcase Campfire Big Table TS4TLH40 2LCN Clay Noce 8'W X 24" D X 40"H	
Mobile Table	B	Steelcase Flex Table Slim FLXSLM 2730 Artic White/4CZ6 Lagoon 58"Wx18"Dx3'6"H	
Storage Cabinet	C	Steelcase Elective Elements E6OD157830C 2HAA Persian Salt Laminate 78"Wx13.34"Dx2'5"H	
Training Table	D	Steelcase Campfire Big Table TS4TL40 25L5 Virginia Walnut 8'Wx4'Dx40"H	
Media Storage Cart	E	Steelcase AM Storage Cart Flex Media FLXCTMD 32"Wx32"Dx66"H	
Visual/Acoustic Privacy Screen	F	Arktura Vapor Liana, Aluminum 8'Wx8"H	
Marker/White Board	G	Steelcase Flex Marker Board FLXMB 3'W1/2"Dx71"H	
Upholstered Bench	H	Viccarbe Common BENCH180H Circulate 9417 70"Wx2'Dx2'H	
Stool	I	BluDot Ready Barstool BD1RD1BARSTL Black Metal 20"Wx19"Dx32"H	
Stool	J	Steelcase Scoop TS30702 Upholstered Seat 23"W20"D33"H 5SD2 Peacock	
Café Stool	K	Steelcase Enea Café Stool Wasabi Polyurethane/Maple Legs 16.5"Wx14.5"Dx27.5"H	
Collaborative Stool	L	QiVi 428 Series 428710 23"Wx22"Dx38-46"H Mesh 5017 Orange 23"Wx22"Dx38"-46"H	